

Stapleford

Ne Nuntium Necare!

MESSENGER

March 2025

Volume 84 No 3

Price 90p



Bee-Fly by Nick Beale. For more on the bee-fly go to page 27

The Messenger is the Parish magazine for the whole community of Stapleford

Bush & Co.

Multi-award winning, leading
Cambridge estate agents

What moves you,
moves us.

Book a free market appraisal

Scan the QR code below

Sales: 01223 246 262

Lettings: 01223 508 085

www.bushandco.co.uk



Bespoke Curtains & Blinds

suecrowcurtains.com



01223 836498



O N CHALLIS

Painter and Decorator

Tel: 01223 841646

Mob: 07939 607653

*All types of interior and
exterior work undertaken.*

*High-class quality
workmanship guaranteed.*



Tyres & Autocentre

**WE ARE NOW IN A NEW LOCATION.
CALL US FOR A FREE QUOTE TODAY!**

- New tyres
- Part-worn tyres
- Wheel balancing
- 4-wheel alignment
- Locking wheel
nut removal

**ALL WHILE
YOU WAIT**

- Servicing
- Brakes fitted
- Shock absorbers
- Exhaust repairs
- Diagnostics
- Batteries
- Engine carbon cleaning
- Air conditioning
- And more...

Opening hours:

Mon-Fri: 09:00-18:00

Saturday: 10:00-16:00

Sunday: CLOSED

**01223
845155**

Unit 2, Hillstead Farm, Hinton Way, Great Shelford, Cambridge, CB22 5AN



WATERLILIES

SKIN CLINIC • BEAUTY

Call **01223 844700**

Book online at

www.waterlilies.org.uk

2d Dolphin Way, Off London Road, Stapleford, CB22 5DW

RUSSELL COOPER GARDENING

(QUALIFIED HORTICULTURIST EST 1987)

**ALL ASPECTS OF GARDENING
WORK CARRIED OUT BY A
PROFESSIONAL LOCAL
BUSINESS**

**MONTHLY MANAGEMENT
OF YOUR GARDEN
UNDERTAKEN**

**Tel: 01223 830575
Mobile: 07702 456797**

Who's who at St Andrew's

www.standrewstapleford.org

Vicar

Rev Dr Simon Taylor 840256

Curate

Rev Lucinda Howard
07763 477821

Churchwarden

Alastair MacGregor
07855 269844

Parish Safeguarding Officer

Rob Needle 844227

Parish Administrator

Gillian Sanders 07752 373176

Children's Ministry

Sue Brown 01954 602248

Director of Music

Tim Kwan 07745 80397

PCC secretary

Nicky West 07927 531719

Treasurer

Chris Bow 841982

Verger

Clare Kerr 842984

Captain of bellringers

Tony Smith 843379

Church flowers

Jackie Nettleton 721366

Stapleford-Nachingwea Link

Trish Maude 242263

Mothers' Union

Hilary Street 840548

Johnson Memorial Hall

Parish Administrator
07752 373176

Friends of St Andrew's

Tony Hore 843796

Gift Aid secretary

Lisa MacGregor 07523 668731

SERVICES at St ANDREW'S

See the St Andrew's Noticeboard for this month, and the church website at standrewstapleford.org for full details. The services include:

9am BCP or CW Communion

10.30am Communion, Services of the Word, Messy Church and Forest Church

SERVICES AT OTHER CHURCHES

Our Lady of Lourdes, Sawston (Roman Catholic)

Sundays 8.45am and 11.15am

Shelford Free Church (Baptist)

Sundays 10.30am

CHRISTENINGS and Weddings

CHRISTENINGS take place during Sunday worship.

FOR both Christenings and Weddings, contact the Vicar.

Stapleford MESSENGER

Editor

Contact staplefordmessenger@gmail.com

Advertising

Contact stapleford.ads@gmail.com

Subscriptions/Distribution

Contact 843415 or vaz@fairshares.co.uk

The subscription for the Stapleford MESSENGER delivered to your home is £9 per annum (£25 by post): single copies 90p.

From the Rev Lucinda Howard

“EVERYONE has a plan until they get punched in the face,” the infamous American boxer Mike Tyson is reputed to have said. Whilst I have no experience of the boxing ring, the saying isn’t a bad summary of how we live our lives, merrily going on our way, caught up in our own little world until something unexpected comes out of the blue and knocks us to the canvas. It may be a natural disaster, it



might be a relationship breakdown, it may be something terrible happening to someone we love or losing our home or job. In my case, after a pleasant Saturday in London seeing family, I got home and began to think I might have food poisoning, but despite the usual symptoms passing, my stomach pain just got worse and worse. Three days in and no better we braced ourselves for A&E where I was diagnosed with a perforated appendix. Emergency surgery and four days in hospital followed and I am writing this recuperating at home – I must take the opportunity here to thank the congregation and lay leaders of St Andrew’s who have been so kind and capable, a shining example of church family stepping up to the plate!

What follows are simply a few thoughts on what I went through, none too original I’m sure, but it’s good to reflect. Firstly, and rather obviously, I have to say that I am immensely grateful for the gift of modern medicine, and it is a gift. As a Christian I believe our loving God *does* heal people today, but I also know that God has given us human intelligence and cooperation, allowing people to develop and benefit from the vast scientific advances that have completely transformed medical care, particularly over the last 100 years. One particularly revolutionary break-through has been the mass production of antibiotics. Since the discovery of penicillin by Alexander Fleming in 1928, the availability and effectivity of the modern drugs have been nothing short of miraculous. Consider my own situation; without surgery and antibiotics, five to seven days after my appendix burst, I would have suffered widespread bacterial infection and organ failure, leading almost certainly to a painful death.

I was again reminded of my gratitude for modern medicine whilst watching the BBC’s adaptation of ‘The Mirror and the Light’, Hilary Mantel’s excellent series of novels charting the rise of Thomas Cromwell through the court of Henry VIII. Had I given birth to our son Sam at that time in history I doubt he or I would have survived: the emergency C-section I needed, the knowledgeable aftercare I benefited from, just hadn’t yet evolved. As a woman I could only gasp in sympathy as poor Jane Seymour lay in agony:

even the Queen of England couldn't be saved from postnatal complications only nine days after the birth of her son Edward VI. Now of course, we know that medicine still has its limits - some injuries are unsurvivable, cancer destroys far too many lives, degeneration of mind and body will come to us all - but we must appreciate what we have and how far we've come, thankful for all those whose tireless work and research have made a difference.

Which brings me to my second point: cultivate an attitude of gratitude, it may sound trite but it's true. I certainly didn't feel very grateful when I was first sick, but I tried to thank God for the care I was receiving even though it's easy to find fault. No one likes being in hospital and up close, it's easy to see the pressure and strain that the NHS is under, this great machine creaking under the weight of demand and diminishing resources. Yet the care I received was amazing, especially from the wonderfully efficient army of nurses and other staff who ran our ward. Their patience with patients who were showing none, their kindness to a confused older woman at 3am, their hard work and adaptability was commendable. We have a jewel in Addenbrooke's, of course it's not perfect and mistakes do happen, but we should be grateful. Friends who have worked abroad in some of the poorest countries and the most desperate of circumstances are always quite radicalised when they return. It's only when you've experienced the lack of healthcare that blights almost half the world, that you truly understand the gift we have in the NHS, free at the point of access and from the 'cradle to the grave.'

And finally, being seriously ill is the great social leveller. Being admitted to an institution however benign, strips you of your individuality, you suffer loss of control and privacy, your dignity does not always remain intact. This is a hard lesson, especially as we are usually so independent and self-sufficient. In the Gospel of John, Jesus says to Peter, "someone else will lead you where you do not want to go." By this he means that Peter will not only lose his freedom and self-determination, but his very life because he follows Christ. For many of us, severe sickness, declining mobility, even loss of our memories and understanding, will mean going somewhere we do not want to go. But at my lowest in that hospital bed I clung to another greater truth, the God who says to us, "Never will I leave you; never will I forsake you." Amen.



St Andrew's Noticeboard

2 MAR	9 AM	BCP COMMUNION
	10.30 AM	CW COMMUNION Exodus 34.29-35; Luke 9.28-36 <i>Listen to him</i>
	6 PM	CHORAL EVENSONG Exodus 3.1-6; John 12.27-36a
3 MAR	7 PM	MONTHLY PRAYER MEETING
5 MAR	7 PM	CW COMMUNION FOR ASH WEDNESDAY Joel 2.1-2, 12-17; John 8.1-11
9 MAR	9 AM	BCP COMMUNION
	10.30 AM	CW COMMUNION FOR THE FIRST SUNDAY IN LENT Deuteronomy 26.10-11; Luke 4.1-13 <i>That's tempting!</i>
	10.30 AM	MESSY CHURCH
14 MAR	8.30 PM	ZOOM COMPLINE 1
16 MAR	9 AM	CW COMMUNION
	10.30 AM	SUNDAY WORSHIP Genesis 15.1-12, 17-18; Luke 13.31-35 <i>On the third day I finish my work</i>
21 MAR	8.30 PM	ZOOM COMPLINE 2
23 MAR	9 AM	BCP COMMUNION
	10.30 AM	SUNDAY WORSHIP Isaiah 55.1-9; Luke 13.1-9 <i>The merciful gardener</i>
28 MAR		ZOOM COMPLINE 3
30 MAR	9 AM	BCP COMMUNION
	10.30 AM	ALL AGE & FAMILY MOTHERING SUNDAY SERVICE Colossians 3.12-17; Luke 2.33-35

The church is open every day as a place to come and pray or enjoy a moment of quiet reflection. Messy Church takes place in the Johnson Hall. Everything else is in the church.

FROM THE REGISTERS

23 JANUARY – Funeral of Donald Tyrer

St Andrew's
LITTLE FISHES

Birth to Pre-School

Mondays in term time

9.15 to 11am

In the Johnson Hall, Gog Magog Way



Free Play, Crafts, Games, Songs & Stories
Meet new friends over a cup of coffee.

Volunteers welcomed to play, chat and make coffee.

For more information contact Fiona Holliday at
layminister@standrewstapleford.org or 478923

Deadline for the April Messenger

Please submit copy **NO LATER THAN FRIDAY 14 March**

By email (Word or similar attachment) to staplefordmessenger@gmail.com

The *Messenger* reserves the right to edit material. Please include contact postal address with all letters to the Editor.

Advertising queries to stapleford.ads@gmail.com

Subscription queries to Valerie Powell on 843415 or vaz@fairshares.co.uk

The views expressed are those of the contributors and do not necessarily reflect the views of the *Messenger*.

Advertisements are accepted in good faith but customers should satisfy themselves that advertisers are able to supply the services they offer.

**Reach
more people**



**Make more
sales**

To advertise in the
Stapleford Messenger
email us at:
stapleford.ads@gmail.com



Shelford

Tree Service Ltd

**Professional Tree Surgeons
covering Cambridgeshire
and Hertfordshire**

Fully Qualified & Insured

01763 208361

07743406569

shelfordtreeservice.co.uk

COULSON

Plumbing ♦ Heating ♦ Electrical

01223 423750 services@coulson.co.uk

**All aspects of plumbing, heating & electrical works
undertaken. From small maintenance tasks to large scale
replacement & upgrade works.**

Bathroom Refurbishments; Boiler Servicing, Breakdowns &
Upgrades; Central Heating Installations; EV Charging Points;
Consumer Unit Upgrades; Electrical Installation Condition Reports.

Delivering excellence since 1884



Mothers' Union



AT the meeting on 23 January, we celebrated the 95th birthday of our dear friend and member, Kay Coe, with a birthday cake. Many

congratulations to her from all of us!

At the Branch meeting on 27 March, Fiona Holliday is coming to give us a Lent Meditation. Usual time and venue: the Johnson Hall, 2.30pm.

It's Mothering Sunday on 30 March and as usual, the Mothers' Union shop offers beautiful cards and gifts – accessible at mueshop.org – as well as a wide selection of Easter cards and gifts. Ely MU Diocese receives the purchase price for each item sold, so this contributes to the projects carried out in the Diocese (such as the Away From It All holiday project).

Hilary Street

World Day of Prayer

Friday 7 March



THERE will be a World Day of Prayer service at 2.30pm in Cox's Close Community Room (CB22 5SP) on the theme: 'I made you wonderful'. This service was prepared by the Christian Women in the Cook Islands.

This is an ecumenical service and everyone is welcome to attend. Refreshments will be available.

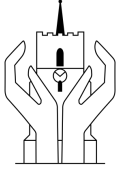
For more information about the World Day of Prayer, go to wwdp.org.uk. **Joy Barnes**

Job opportunity



COULD you be the new Parish Administrator for St Andrew's? We are looking for a part-time administrator to support Revd Simon and the committed team of people who support the many dimensions of our parish

worship and activity. A flexible role (10-14 hours a week) in a friendly setting is offered to a well-organised and motivated self-starter with good and varied administrative experience. Further details are available on the church website by searching for 'Parish Administrator' or from Alastair MacGregor on churchwardenstapleford@gmail.com. The closing date for applications is Monday 3 March and interviews will be held in the week beginning Monday 24 March.



st Andrew
STAPLEFORD

www.standrewstapleford.org
- church for the whole community -

St Andrew's Church
Mingle Lane
Stapleford
CB22 5SY

MUSIC MOMENTS

SATURDAY 29 MARCH, 6-7PM

FREE (with retiring collection)

A close-up photograph of a violin and its bow, set against a dark background. The violin is the central focus, with its body, f-holes, and bridge clearly visible. The bow is positioned vertically to the right of the violin. The lighting is dramatic, highlighting the wood grain of the violin and the texture of the bow hair.

Join us for...
**an evening
of enchanting music**
with wine and nibbles

*Music by members of the community for the community
Raising funds for a junior organ scholarship and music at St Andrew's*

Thank you!

STAPLEFORD Community Primary School Parent Teacher Association is very grateful for the generous donation from the *Messenger* fund which has allowed us to purchase a new notice board. This is for outside the school to replace the one which is in a very poor state. The noticeboard is a key point for communication within the school and for the wider community - it will be fantastic to install a new one. In the next *Messenger* we hope to show you a photo of the new noticeboard in action! **Julia Creed on behalf of Stapleford Community Primary School PTA**



Current noticeboard image by Julia Creed

Music Moments Concerts

AFTER a fantastic inaugural Music Moments concert last November, we are delighted to say we will be back for another concert in St Andrew's Church on Saturday 29 March from 6pm to 7pm.

If you didn't make it to the first one, the aim of this concert series is to celebrate our local musicians and share the joy of music making with the community. There is clearly a lot of musical talent in Stapleford and beyond, and we are now calling on people to take part! If you would like to perform in the above concert, or any future concerts, please sign up using the QR code or the link here: forms.gle/zL28nQen4UdoC2GD8.

As before, the concert will have an informal, living-room vibe, with wine and nibbles to enjoy alongside the music. Entry is free, with a retiring collection to raise money for the music at St Andrew's, as well as to help fund a junior organ scholarship at the church.

So come and join us for another hour of music performed by local musicians! We look forward to seeing you there.

James and Lizzie Buchanan-Worster



St Andrew's Choir - Come and join us!

REHEARSALS
THURSDAY 7PM -8PM @
ST ANDREWS CHURCH

Contact - Timothy Kwan
07745 803972
music@standrewstapleford.org



St Andrew
STAPLEFORD

Stapleford Community Warden Service

Assisting older people to live independently at home. Providing daily phone calls (Monday to Friday) and help with things such as:

- making drinks and light meals
- watering plants
- making appointments
- getting small items of shopping
- collecting prescriptions
- wellbeing contact

(a small weekly fee applies)

For further information call the Warden on



07436 102733 or juliet.hawksworth@ageukcap.org.uk

Age UK Cambridgeshire and Peterborough is a charitable incorporated organisation registered with the Charity Commission for England and Wales with registered charity no. 1165856

Women's Institute



WE are very fortunate in our WI to have a committee member, Yvonne Allison, who works diligently behind the scenes to ensure we have a varied programme of speakers at our meetings. Yvonne's efforts were very much in evidence at our meeting in February when members listened to a highly informative, interesting and motivational talk given by Malcolm Parkinson, a response volunteer from Blood Runners. Their full title is Service by Emergency Response Volunteers (SERV). This is a charity-run organisation which has 30 groups in the UK and operates as an urgent delivery service to hospitals, air ambulances and homes. The main products, which are transported by motorbikes or cars, are blood-related but can include samples, human milk for babies, and medical devices. Each member of the organisation is fully trained, commits to two duties each month, and funds their own petrol or electric charge. The Cambridge and Suffolk group was set up in 2010 and since its inception has carried out more than 18,000 call-outs, with more than 150,000 items transported free of charge to the NHS. One way SERV raises money to fund its annual running costs is by collecting and then selling old mobile phones, empty printer ink cartridges, sat navs and soft toys. Our members are going to donate any unwanted items from this list to assist the charity.

During the business section of our meeting members were given the opportunity to vote on which one of the four shortlisted resolutions they wish to be proposed, discussed and voted on at the National Annual General Meeting. Every WI member has the opportunity to vote at this initial selection stage, and the chosen resolution if passed, then becomes a WI campaign for the forthcoming year. The four resolutions are 'Let's talk about incontinence', 'Bystanders can be lifesavers', 'Join the repair revolution', and 'Eliminate landfill of medication packaging'. These topics can provoke some interesting discussions and ideas. So, if you are interested in finding out more about the activities, campaigns and friendship offered by the WI, as well as enjoying speakers, social events and fun evenings at our group here in the village, then please consider coming along to one of our meetings at the Pavilion on the fourth Thursday of each month at 7.30pm. Our next meeting is on 27 March and is our Annual Meeting where the past year will be reviewed and the election of the Committee and President for the coming year will take place. You can also look at our website staplefordwi.weebly.com or speak to Sallie Dixon on 843847.

Joyce Dobson

NEW BRANCH OPENING

Independent vets opening this March!

For more information or to register
visit churchstreetvets.co.uk

**And come and meet us at our
open day on the 26th April**



Church Street,
Stapleford,
CB22 5DG

01223 776773



Church
Street
Vets



Tree Project



TREE planting has continued around the village by a trusty band of volunteers on several Sunday afternoons. We have just about planted all the whips we obtained this year, or given them to villagers who asked for a tree. People have also donated saplings, and these have all been allocated. We are coming to the end of the planting season now, and we are pleased to say that most of the trees we have planted have been 'adopted' by villagers, which means they will be looked after and watered in dry weather. Thank you!

A number of people have also planted a tree in their own garden. If you are interested in having a tree for your garden, you can source your own, or we will be able to offer you a small whip from a choice of native species: some will grow into a small tree, some medium sized, and some large. If you think there is an area of public land that would benefit from having a tree, please contact Sophi. We have many ideas but welcome more suggestions. Please be reassured that we will never plant a tree outside your house without talking to you and getting agreement first.

You will see that each tree we have planted on public land is numbered, and there is a list of the trees we have and their species, and where they have gone to. This list will go on the Parish Council website so you can see what's planted where. We will monitor the trees' growth and keep a record.

Next autumn we will resume planting, and we plan to plant some larger saplings in certain areas to increase their chance of survival. We will be asking for donations to purchase these, also more stakes and guards.

See staplefordparishcouncil.gov.uk/stapleford-tree-project for more information about the project, or contact sophiberridge@gmail.com if you have any questions.

To register your interest or to donate to the project, fill in the form at the above address, scrolling down to 'register here'. **Helen Hale**



Tree planting from this season



*Award winning
free house & restaurant
in the heart of the village*

01223 503 402

@hello@threehorseshoes-pub.com

www.threehorseshoes-pub.com

staplefordonline.co.uk



Your community website
for up to the minute news and
views from around the village



PLUMBING, HEATING
AND MECHANICAL



ELECTRICAL, FIRE
AND SECURITY



REFRIGERATION AND
AIR CONDITIONING



RENEWABLE ENERGY

Domestic & Commercial
e: info@huttie.com t: 01223 292295
www.huttie.com

2G3S

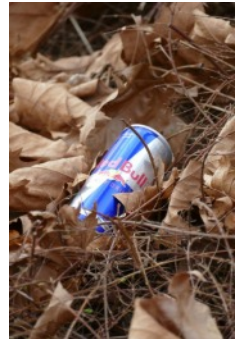


UPCOMING events to look forward to:

Dr Bike continues to run its volunteer-run weekly bike repair sessions at the Old Slaughterhouse in Stapleford, 3pm to 5.30pm every Tuesday. Children are welcome to come and learn how to look after their bikes and do simple maintenance and repairs, but please attend with them (for safeguarding reasons). For more

information, contact drbikestapleford@gmail.com. You can also book a time slot at that address, though this is not essential.

Litter Picks – Stapleford: Sunday 2 March, meet at 2pm by the Pavilion, and bring gloves and a picker (grab stick) if you have them. Sawston: Saturday 8 March at 10am, gather at the Small Town Café at Ashwell Point opposite Lynton Way recreation ground (along Babraham Road, CB22 3LJ) - it is the 60s style building at the front of the industrial estate. Again, if you have gloves and a picker please bring along. If you have a high-vis vest it would be a good idea to wear it for safety reasons.



We are planning various activities for 2025, watch this space! Films, discussions, speakers, stalls, repair cafes...

Maybe you've been trying to eat more healthily in 2025. You might have heard the phrase 'eat 30 different plants a week' rather than the five-a-day recommendation. You can boost this number by sprinkling seeds on a salad or on a quiche, or adding to a casserole or pasta dish; cook with different herbs; or eat multi-grain/multi-seed bread. 'Eat a rainbow' is another mantra you may have heard – this means eat lots of different coloured fruit and vegetables, as they contain various antioxidants and other compounds that are useful to your body. Another thing to bear in mind if you are reducing your meat intake is to ensure you have enough iron – green vegetables like spinach, chard, and kale contain it, and absorption can be boosted by having vitamin C at the same meal e.g. by using a citrus dressing on the greens, or having an orange for dessert. You may be trying to buy local food, and this will reduce food miles (i.e. the number of miles between farm and fork), supports the local economy, strengthens food security by shortening the supply chain, is fresher and therefore more nutritious, and helps to build the local community.



AA

Call me to book lessons
Alistair Gibson
 Tel: 07713 156 737

RAYMENTS GARAGE LIMITED

ESTABLISHED IN 1970

23 ASHEN GREEN, GREAT SHELFORD

MOT, SERVICE AND REPAIRS

EXHAUSTS • TYRES • BATTERIES
 BRAKES • CLUTCHES • SHOCK ABSORBERS
 AIR CONDITIONING SERVICES

TELEPHONE: 01223 843048

EMAIL: john@raymentsgarage.com



Don't Dilly: call Lilley of Sawston

Mobile: 07768 718223

ROTAVATING | TURFING | SEEDING | TREE WORK and PADDOCK, ETC.
 PAVING | LARGE OR SMALL AREAS

FENCING A SPECIALITY

128 Duxford Rd, Whittlesford, Cambridge, CB22 4NH

Wellbeing and relaxation



Reiki With
Sue Pitman
 HELP IS AT HAND

Tel. 01223 843164
www.reikiwithsuepitman.co.uk

Barker Bros
 EST 1843



QUALITY LOCAL PRODUCE

FAMILY BUTCHERS

43, High Street, Great Shelford
 01223 843292
www.barkerbrosbutchers.co.uk



More than just a service



Heating



Plumbing



Renewables



Electrical

All Domestic and Commercial works undertaken

www.shelfordheating.co.uk

Telephone 01223833426 E-Sales@shelfordheating.co.uk

And if you can get organic, even better. When crops are sprayed with pesticides you absorb a little of it yourself. Wildlife is reduced when strong pesticides are used. The neonicotinoids that have been officially banned (but in this area are often allowed for use on sugar beet) disorientate bees if they don't kill them – and one teaspoon is enough to kill over a billion honeybees! Organic farmers do use pesticides, but they tend to be less harmful ones and used in a very targeted way, or they will use another method e.g. a mulch to control weeds, or a natural predator for a pest. And antibiotics are only given to livestock on an organic farm if they are ill, never as a preventative measure. This helps to slow down the resistance that many bacteria are developing to antibiotics, due to their overuse.

If you are interested in green matters and the environment at all levels (individual, local, national, international), email mail2G3S@gmail.com to sign up for our monthly newsletter, or to get more information about our meetings. We are a friendly group and welcome anyone who wants to come along to one of our events or to find out more about how we can live sustainably. Also see our Facebook page and our website 2g3s.staplefordvillage.org.uk. **Helen Hale**

South Cambs Organic Gardeners

Monday 10 March at 7pm,
Cox's Close Community Room, Stapleford



IN England, private gardens cover almost 2,400 square miles, with over 20 million active gardeners. These gardens are increasingly recognised as having an important role to play in helping mitigate the interlinked climate change and biodiversity crises. So, what can gardeners do to enable their garden to help soften the climate crisis, but also to remain both enjoyable and productive?



Admission £2 on the door
All welcome

Yesteryear

SYLVIA Morris looks at events in the month of March over the years. Punctuation, spelling and capital letters are exactly as printed at the time.

1834

ACCIDENT. On Saturday week, as Mr. James Smith, farmer, of Stapleford, was descending the flight of stone steps leading from the assize courts, in this town, he fell down a considerable distance, coming with great force upon his head to the bottom of the stairs. He was immediately raised up quite insensible, and although every medical assistance was afforded he expired on Saturday morning last, having scarcely uttered a word after the accident. The deceased was fifty-four years of age, and has left a widow and twelve children.

1905

Cricket club. The annual general meeting was held in the Council School on Friday. Mr E L Hawkins presided. There was a fair attendance of members and the following officers were elected: Captain Mr Giddens; Vice-Captain Mr B L Hawkins; Hon Secretary and Treasurer Mr S Hagger. The secretary reported that the new ground lent by Mr S Hagger had been levelled, and would be fit for use shortly. It was hoped that 12 matches with neighbouring village clubs would be played during the season.

1912

Resolution. "That this Council having considered the proposal of the Town Council of Cambridge for the constitution of that Borough into a County Borough and its severance from the Administrative County of Cambridge are of the opinion that it would be disastrous to the interests of the administrative County of Cambridge and would involve the Ratepayers, Landowners and Cottage Tenants of the Rural Districts of the County in the permanent burden of heavy additional rates if the Bill about to be drawn up for the constitution of the County Borough for Cambridge should become Law. This Council therefore urges the County Council to do all in their power to oppose the Bill about to be laid before Parliament for creating such Borough. (Carried)" *(From the Parish Council Minutes)*

1920

WOMEN'S INSTITUTE TO BE ESTABLISHED. A meeting in the County Schoolroom decided to form a Women's Institute in conjunction with the Federation of WIs. The meetings will be entirely non-party and non-political. Thirty-five members enrolled.

First Meeting of the WI. A successful meeting of the Women's Institute was held on Thursday, the hostess for the afternoon being Mrs H Gray. Mrs Burke of Harlow gave an interesting demonstration of glove making. Fifty-nine new members enrolled.

1935

THE KING'S JUBILEE. At a representative meeting of parishioners, held in the old schoolroom under the chairmanship of the Rev Mervyn Rogers, it was unanimously agreed that the occasion of the King's Jubilee be celebrated by certain festivities in the village. It was proposed that the following should, if possible, be arranged: sports for children from 2.30 to 4.30 pm, to be held in the meadow of Vine Farm (by kind permission of Mr Martin), and a tea to the whole of the parishioners and children at 4.45 pm. It was further agreed that all householders in the parish should be asked to contribute what they could reasonably afford towards expenses, and the following were appointed a committee to assist in raising the necessary funds: Mr Harold Gray (Chairman), Messrs Badcock, Batchelor, Chalk, Cook, Dove, Dowell, Hardy, King, Slipper, Smith and the Rev M Rogers.

1955

PARISH COUNCIL MEETING ANNUAL ASSEMBLY. The annual assembly of the parish meeting was held in the school with Mr H Beavis in the chair. There was a poor attendance. The meeting was opened by the chairman who dealt fully with various matters connected with the village amenities such as future accommodation at the school to cope with the increased numbers of children owing to the housing development and the necessity of enlarging the school recreation ground and the appreciation of the village for the services rendered by the vicar and Mr R Hall in stepping in and helping with the postal deliveries during the Christmas rush. Mr Dove in giving the report of the school managers spoke of the difficulties he had encountered in getting school staff, which had now been overcome. Mr Lang gave a report of the village hall activities and the need of funds for necessary repairs ... Mr Hardy, chairman of the Cricket Club and Recreation Ground Committee stated that the hedges round the recreation ground had been put in order without any expense to the parish, and thanks were due to Messrs Beavis, Rickett and others for the voluntary assistance but stressed the point that the hedges will require attention and the council could not expect this to be continued on a voluntary basis.

D.L.M. AUTOS

63a Orchard Road, Great Shelford CB22 5AA

MOT - SERVICE - REPAIR

01223 844828

www.dlmautos.co.uk

GATWARD **SONS** & SONS

BUILDING ON EXPERIENCE

CARPENTRY, JOINERY & BUILDING CONTRACTORS

Ashley

 07525 494 478

Chris

 07557 735 247

 contact@gatwardandsons.co.uk

EXTENSIONS CONVERSIONS RENOVATIONS ALTERATIONS

Puzzle Corner

4 x 4

Identify the four groups of four clues and the connections between the clues in each group

EAT	WHO	ATE	RIP
WHY	TOO	GET	ARE
WAN	EWE	TEA	RUN
PIG	ETA	FOR	PSI

February anagrams

Solve the anagrams
The initial letters spell FEBRUARY

RUN	TRIO	CATHY	PRAISE
RUFFIAN	OPENABLE	RENASCENT	SACRECOEUR

Set by Hermes - Answers on page 35

Stapleford Horticultural Society

A REPORT on our February talk on 'History of Gardening in Britain' by Nigel Start was too late for inclusion in this issue. It concluded our 2024-2025 season of talks, so the next event will be our AGM on Thursday 13 March at 7.30pm in the Johnson Hall to which all are invited.

Our current annual subscription is £5 which entitles members to attend 6 talks at the reduced fee of £2, join 3 summer outings, and vote at the AGM. Guests are welcome to attend talks at the higher fee of £3, and join the visits at a higher cost if places are available. These figures are subject to change at the AGM. **John Sherwell**



Snowdrops in the Villedômer Garden by John Sherwell

Stapleford Strollers: Walk 133

Park, Ride and Stride: a circular walk from Newmarket Road

To get the start of the walk

DRIVE to Newmarket Road Park and Ride, Cambridge (CB5 8AA) and start the walk from the main bus stop.

Distance of walk

Approx: 5 miles.

OS Map

OS Explorer map 209 for old-school types; smart phones for others. If you want a free map extract, use maps.the-hug.net. The route map provided is taken from this site.

Extra Information

This route goes through, in-part, an area of Cambridge that is rapidly changing due to new building. Near the end of the walk, the housing development known as Marleigh can be experienced. Most of the walk is on solid surface, but it can get dodgy near the River Cam at Fen Ditton.

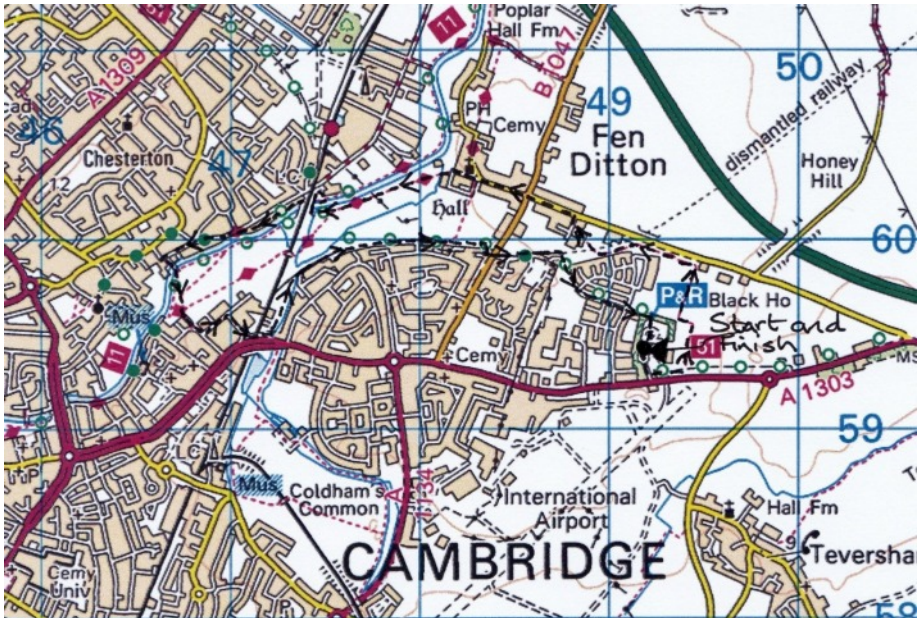
Route of the Walk

Starting from the main bus stop at Newmarket Road Park and Ride, exit on to the A1303 and turn left along the pavement.

Turn left again, soon afterwards, along a tarmacked footpath, just beyond Sanderson Way. The path enters a tree belt. Follow it for several minutes and, after passing an old railway bridge to the right, look out for a side path, also on the right. This leads into a field, which is crossed diagonally left and exits onto a small side road at the edge of Fen Ditton, meeting a more important road after about 100m.

Cross over and turn left along the pavement, crossing the B1047 and continuing ahead along Fen Ditton High Street. When Church Street is reached on the right, carry on ahead, with the parish church to the right and, when the road peters out, go left following a grassy path, with the River Cam to the right until the new footbridge over the river is reached **. Use the bridge and, on the far side, double back to the riverside path and turn right, going under the footbridge and rail bridge.

When this path meets a road, carry on along it (Water Street), going left across from Fallowfield, when the road swings right. Opposite The Green Dragon pub, take the footbridge over the river. Go right and then, almost immediately left, at a path fork and cross part of Stourbridge Common. This path meets a small side road and, shortly after, Garlic Row. Go left, and, very



soon after, left again into Mercers Row. Take the first right along Swanns Road and emerge onto the A1134.

Turn left on the pavement, cross the railway bridge and, almost immediately, go left on a paved path straight after the Leper Chapel. When Stourbridge Common is reached again, go right on a side path with, at first, industrial units and then houses to the right. Follow this, ignoring any side paths, until the B1047 is reached. Cross over at the pedestrian crossing and go left.

Turn right almost straight away, along Fison Road, and follow the cycle/footpath sign for Bottisham just before Ann's Road, which will bring you to a path running along the edge of the housing development. Keep going until a side path heading right is reached. This leads to Gregory Park North. Follow the pavement, taking the route through the new development of Marleigh. At the end of Gregory Park North, a footpath continues, leading to the back of Newmarket Road Park and Ride. Return to your vehicle.

** If it has been wet, turn sharp left just after Church Street in Fen Ditton and walk along a tarmacked path, which will bring you to the new footbridge over the river. **David Barnes**

The Stapleford Strollers do not accept responsibility for any accident or mishap that may happen to any person who follows this route.

L A Kerridge

Painting and decorating

*15 years-plus
experienced tradesmen
Quality interior and
exterior decoration
Artex ceilings smoothed
Free estimates and quotes.*

Tel 01223 832745
Mobile 07843 850484

HJ Paintin Ltd

**INDEPENDENT FAMILY FUNERAL DIRECTORS
MONUMENTAL MASONS**

Private Chapels of Rest
Floral Tributes and Printed Orders of Service
Golden Charter Pre-payment plans
Personal Attention Assured at All Times
24-hour Caring Personal Service



43 High Street, Linton, Cambridge CB21 4HS

Tel: 01223 891226

8 Morley's Place, Sawston, Cambridge CB22 3TG

Tel: 01223 830065

TIM PHILLIPS & Co.

Accountants

Established 1991

Independent, specialist service for:
**Small Business • Self Assessment
Personal Taxation**

Free initial consultation - no obligation

EASY, FREE PARKING

Copley Hill Business Park, Cambridge Rd, Babraham
Off A1307 between Wandlebury and Babraham

Tel: 01223 830044 www.tpaccounts.co.uk

All types of
carpentry work
undertaken

*Phone
01223 842440
for free prompt estimate*

STEVE BOND
3 Cherrytree Avenue
Stapleford
Cambridge

ALL HUNG UP



Specialist | Blinds
Tracks | Poles | Curtains
Supply and Installation

E: paul@allhungup.uk
T: 07920 772 969

www.allhungup.uk

M D COOPER

specialising in
INTERIOR DECORATING
AND GLAZED TILING

Design services available

4 Falkner Road, Sawston
Telephone 01223 832422
Mobile 07860 803938

South Cambs. in the early 17th Century

A time of royal transition from Tudor to Stuart



A TALK by David Jones, Tuesday 11 March at 7.45pm in the Pavilion. Free to members - non-members pay £3 on the door.

Between 1600 and 1625 the country went through a remarkable transition, from the last of the Tudor royals (Queen Elizabeth I) to the first of the Stuart royals (James I and VI). Some of the most important religious, cultural and governmental changes in our history happened during this time or their foundations were laid. How did this transition impact South Cambridgeshire and more importantly why was South Cambridgeshire at the heart of these changes? David will explore this period in his talk and give some examples of dramatic local impacts.

David Jones is a Chartered Accountant by training but an enthusiastic amateur local historian, something he was able to spend more time researching during Covid lock-downs. He has lived in Little Shelford for 25 years having started life in Birmingham and the Black Country.

His interest in this particular period of South Cambridgeshire history was fired by the discovery of a unique bell in the belfry at All Saints, Little Shelford, and that led to a whole series of discoveries and links which David has found fascinating. These discoveries will form the core of his presentation. **Chris Cooper**



We're waiting for your story!

HAVE you a story to tell or an event to publicise? Or perhaps you have an opinion to share on an issue that is important to you. If so, drop us a line on staplefordmessenger@gmail.com - after all, it's your magazine and we would love to hear from you.



Stapleford Twinning Association

TWINNED WITH VILLEDÔMER, FRANCE

French/English Quiz

Saturday 22 March

7.30pm in the Community Room

Cox's Close, Stapleford

£7.50 per head, maximum of six per team, to include light refreshments in the interval. Please bring your own drink.

Please complete the entry form below and return it together with your fee by Saturday 15 March to Tony Hore:

8 Sternes Way, Stapleford, Cambridge, CB22 5DA

Tel. 843796 or 07774 136027

We look forward to seeing you!

✂.....

French/English Quiz Entry Form – Saturday 22 March

Name of team.....

Team Captain.....

Address.....

Telephone Number/

E-mail

Please make cheques payable to 'Stapleford Twinning Association'

Buzzing Bee-flies

I WAS once asked by a visitor if I could tell her what an insect she had just seen was called. She said that the best description she could give was that it looked like a flying shrew! I thought this was a great description of the very distinctive, fluffy little insect called a bee-fly. Bee-flies are bee mimics, looking a bit like a smaller bumblebee.

Early in spring, as soon as the bright spring flowers begin to appear, bee-flies make their appearance. The Dark-edged Bee-fly *Bombylius major* is the most common of the species found in the British Isles. It is a member of the *Diptera* (true flies), and has six long, thin legs, a very long rigid proboscis (long tubular tongue) and a plump, rounded furry body covered with tawny orange/brown hair. The Bee-fly *Bombylius major* is 10 to 12mm long, excluding the proboscis which adds another 6mm. The proboscis is held out in front of the fly, even when it is resting. Bee-flies have two wings (bees have four) heavily marked with darker colours, although this is difficult to see when they are hovering.



Photo by Nick Beale

Bee-flies are quite mobile, found in grassy sunny places, from March to June. They dart from flower to flower, poking their proboscis into flowers to sip nectar. Although appearing to hover while feeding, they usually cling to flowers with their spindly legs. They fly low, hovering with a high-pitched whine over spring flowers such as speedwell, ground ivy, violets, primroses and cowslips as well as many more. On Magog Down they can be seen feeding on the blossom of the low hanging branches of hawthorn trees in the hedges and on the sunny edges of North Down. They also sunbathe on bare ground and dead leaves.

Bee-flies have a parasitic life cycle. Females fly over the nest holes of various species of solitary bees and wasps, laying (i.e. flicking out) their eggs in the hope that they will land in or near a solitary bee's nest. On hatching, the larva wriggles its way into one of these holes. At first it feeds on the pollen and honey stored by the solitary bee for its own larva. After its first moult the bee-fly grub changes into a carnivore, feeding then on the host larva. Bee-fly pupae have been found in nests of solitary bees, so it seems that the bee-fly grows to maturity within the host's home, only emerging as an adult in spring. The sudden change in diet by the larva is unusual among insects, especially since the bee-fly returns to a diet of nectar as an adult.

Claire Beale

FULLY FITTED
FROM
£895*



Checkatrade
9.8 out of 10

Trustpilot
★★★★★
9000+ reviews

Tired of your heavy garage door? Open up to a Garolla.

- ✓ FREE 5-year warranty
- 🇬🇧 Manufactured in the UK
- 🔧 Fitted by a local Garolla engineer
- 🏆 The UK's No.1 recommended

*Applies to white Transform doors up to 2.25m wide



Ask about our **NEW** Secured By Design accredited TITAN door, giving you peace of mind.

GAROLLA
ELECTRIC GARAGE DOORS

BOOK A **FREE SURVEY** TODAY
01223 902 156
GAROLLA.CO.UK

FLOOR COVERINGS

Cambridgeshire's largest flooring
showroom est. 1996

FREE no obligation quotes.

01223 233233

www.floor-coverings.net



Unit 31-32 Dry Drayton Industries, Scotland Road,
Dry Drayton, Cambridge CB23 8AT
Open: Mon - Sat 9-5

Christopher THE LOCKSMITH

ARE YOUR LOCKS BEHAVING BADLY?

We Value Old Fashioned Customer Service
A Local Trusted Family Business Since 1989

- 🔑 Specialist in UPVC & Wooden Doors
- 🚚 No Call Out Charge
- 🛠️ No Fix No Fee
- 🛡️ All Work Fully Guaranteed
- 👴 10% Senior Citizen Discount



For More Advice & Help Call Christopher:

07772 111 222

www.christopherthelocksmith.co.uk

Leah Manning: A Life for Children 1886 - 1977

A talk by Mike Levy



THE speaker: a teacher, journalist and author of 'Get the Children Out - Unsung Heroes of the Kindertransport', introduced us to the life and work of Dame Leah Manning. Though many of us had not previously known about this brave and caring woman, we learnt that in Young Street, Cambridge, a blue plaque commemorating her work with and for children was unveiled in 2020, that in Harlow there is the Leah Manning Centre in memory of her work for founding New Towns, and in Bilbao there is the Plaza Leah Manning in memory of her work for refugee children during the Spanish Civil War.

Leah Manning (née Perrett) was born in Droitwich in 1886. Her parents were members of the Salvation Army and her grandmother Sarah was a Victorian reformer who set up hostels for homeless girls, while her grandfather was a Methodist Liberal. She grew up reading widely and was very interested in the pursuit of education for young people. She passed the Entrance Examination for Homerton College and started as a student teacher in 1905 at The New Street (aka the Ragged) School. She soon realised that the children did not have the energy to be naughty and argued - unsuccessfully - for the provision of free school milk for all school children. She did eventually have a sort of victory over the council when she introduced England's first after school club.

In 1913 Leah married William Manning, an astronomer, but in 1914 war broke out. Leah, a pacifist, already had a Red Cross certificate so she volunteered as a VAD (Voluntary Aid Detachment) until the LEA asked if she would return to teaching. In 1921 she became Head of the Open Air School. In 1923, influenced by Marie Stopes, she was instrumental in the opening of the first Family Planning Clinic in Cambridge.

During the 1930s Leah Manning visited Germany to see for herself the conditions among the poor and also went to Spain to look at education and poverty there. She set up an escape route for children and even requisitioned



1ST Shelfords and Staplefords Scouts

JUMBLE SALE

&

AUCTION

Cash Only

Sunday 27 April

Doors open 2pm

Great Shelford Memorial Hall

**Jumble can be taken to the hall 10am to 12pm
on Sunday 27 April**



We're sorry, but we cannot accept mains electrical goods, or furniture and furnishings that fail to meet fire safety regulations.

We welcome high quality jumble which will help the scouts to raise lots of money.



a ship, the SS Habana, which General Franco tried to bomb. The twenty-nine who made it to Cambridge were initially housed in the Vicarage at Pampisford then in Station Road, the house now being the Steven Perse nursery department.

Hugh Dalton was a friend from her student days and, encouraged by him and others, she became Secretary then President of the NUT. The Union sponsored her efforts to become an MP and eventually she became the MP for Epping then Islington. While MP for Epping she argued for the establishment of Harlow New Town when she served on the Commons Committee considering the 1946 New Towns Bill.

Leah Manning was clearly a most wonderful woman, a lifelong champion of women's and children's causes and one of the first women to enter parliament. **Jane Steadman**

Café Morning!

In aid of Stapleford Community Warden Scheme



21 March between 10.30am to 12pm



Drop in for drinks, cakes and a chat
Donations to the Warden Scheme

Cox's Close Community Room, Stapleford
More information contact Juliet: 07436 102 733.

All Welcome



Looking for a local venue?

The Johnson Hall, next to St Andrew's Church, is an ideal venue for small groups and children's parties. The Hall is **available for hire** for one-off events and regular bookings.

For details please contact the **Parish Administrator**:

Tel: 07752 373 176 **Email:** admin@standrewstapleford.org

OvenPad Cleaning Services

I will professionally and efficiently clean ovens, ranges, Agas, ceramic hobs, extractors, microwaves, and BBQs.

It's a dirty job, why not give me a call?

Please contact **Paddy Kelly** on

Tel: 01638 742703

Mobile: 0775 263 1343

Email: info@ovenpad.com
www.ovenpad.com

Great Value

GREAT SHELFORD LOCAL STORE

Local Service

A great deal more from your local store!

General groceries • Fresh produce • Confectionery

• In-store bakery • Off-licence • Photocopying

• Newspapers, magazines & stationery • Lottery

• Dry Cleaning • Passport photos

Full Post Office counter facilities

33-35 Hinton Way, Great Shelford

Tel: 01223 843307

Shop opening times:

Mon-Sat:

7:00am - 8:00pm

Sunday:

8:00am - 6:00pm

POST OFFICE

Post Office opening:

Mon-Sat:

7:00am - 8:00pm

Sunday:

8:00am - 6:00pm

ART OF
Flooring

**QUALITY FLOORING SUPPLY,
INSTALLATION & AFTERCARE**

Specialists in Wood Flooring, Carpets and
Luxury Vinyl Flooring Solutions

"No matter how big or small the project is, Art of Flooring makes sure they take their time to understand our needs and budget for the specific project and offer us their expert advice on the most suitable product solution.

We would highly recommend Art of Flooring."

Bernard S, Cambridge

**141 Milton Road Cambridge CB4 1XE
01223 755 802 www.artofflooring.co.uk**

The Country Store

Animal feeds, bedding and accessories,
shooting requirements and country clothing

Visit our
online
store!



www.thecountrystore.co.uk

Unit 12a, Sawston Trade Park, Pampisford,
Cambridge CB22 3EE.
01223 837977



LYNNE HORTON INTERIOR DESIGN

CURTAINS & BLINDS
FURNITURE & JOINERY DESIGN
UPHOLSTERY & SOFT FURNISHINGS
COLOUR & FABRIC SCHEMES
BATHROOM DESIGN
FURNITURE & LIGHTING SOURCING



www.lynnehortondesign.com

lynne@hortondesign.org

07703816370



Peter Pan the Pantomime, or was it the rehearsal?

FROM the pre-recorded safety announcement right up to Eleanor Harris-Wright's final "woof" as Nana, Peter Pan had the audience smiling and laughing throughout.

This year's pantomime was a Little Shelford script debut for Miles Cragg, depicting a rehearsal for a production of Peter Pan, beset with problems – from the lost 'Lost Boys' who spend most of the production trying to make their way back to Shelford from London, to missing props, problems with the set and issues with the sound effects and music. While the usual panto puns and audience participation were present, they were given a fresh, new twist, with the audience at one point finding themselves declaring that they wanted to go home! "Oh no we don't!"

Directors Dick Wallin and Heidi Meikle created a production which allowed all the youngsters to shine and Francess Richardson's brilliant artistic talent treated the audience to three beautiful backdrops. The sound team did a fantastic job, from timing the amusing bell ringing which accompanied Imogen Butler Burd and May Sillence's comical entrances as the fairies Doorbell and Schoolbell, to the wonderful scene between Raleigh (Alexander Hunter) and Columbus (Tommy Haworth) as they rehearsed with a pistol – theatrical comedy at its finest!

The costumes really brought the characters to life. The seagull chorus were a spectacle to behold: resplendent in white hoodies and leg warmers and accompanied on stage by a human-sized ice-cream. The glitz and glamour of Trinny and Susannah (Millie Kennedy and Ella Guron) was magnificent, their costumes enhancing the fabulously stylish characters created by the actors.

The singing this year was second to none, thanks to Lucy Barlow and Miles Cragg's musical direction and a very talented cast. When the whole cast came together to sing, the audience could not help but feel moved, particularly during the rendition of 'You Will be Found'.



*Top: Seagull chorus,
bottom Trinny and
Susannah.*

Maddie Young, as put-upon Assistant Director, Steph, led the cast in a fantastic performance of 'Nine to Five', dazzling the audience with her singing and dancing. The pirates' performance of 'With Cat-Like Tread' was also excellent.



'Nine to Five'

Harry Chatwin and Joseph Morris were splendid as this season's Panto Dames, humorous in their bickering and disagreements but showcasing the genuine beauty of their singing in the scene where Hook sat nestled between them as they fought for his affection.



Peter Pan

Thomas Welchman's depiction of Captain Hook was impressive as he switched personality traits: one moment cruelly reprimanding his poor first-mate, Smee (Dougie Carrothers); the next, crying for his mummies! Their duet, 'Good old Captain Hook', was fabulous.

Scarlett Wilkinson made a brilliantly bossy Peter Pan, commanding the stage as she chastised her poor Shadow all night! Their skilfully synchronised duet, 'Me and My Shadow' was superbly choreographed and wonderfully executed by both. Dougie - cast both as the sad, suffering Shadow and the sycophantic yet disgruntled Smee - communicated the displeasure of both characters with inventive facial expressions.

Emma Russell made a wonderful Wendy, her happy enthusiasm and innocence offset brilliantly by moments of cutting cynicism and mischief: questioning the existence of Neverland; challenging Peter as to whether he could really be happy in a place without Netflix; and offering – somewhat threateningly – to sew on Peter's shadow while brandishing an over-sized needle. "Ouch!"



Hook with the Dames

Hannah Pulford's Tinkerbell was inspired. From the moment she dragged herself through the window into the Darling nursery in Act 1, only

to be told to go back as they were going to start the scene again, Hannah conveyed the weary frustration and exasperation that brought so much humour to the role.

There were so many more amazing performances! Emilia Munoz made a fantastically formidable and demanding Director, deflating the other characters' efforts with a withering look. Beatrice White and Isabella Young had a wonderful onstage rapport in their roles as the Shakespearean crocodiles. Both sets of Lost Boys brought much humour to the stage: the workmen's refusal to give up their day jobs contrasting with the childhood innocence of the original lost boys. Miles McCrone elicited much empathy from the audience as the left-behind Lost Boy, Hawkeye, receiving an enthusiastic cheer when he was finally reunited with the others. To describe this as a village pantomime does not do it justice. The standard was incredible. I am already looking forward to next year. "Oh yes, I am!"

Review by Clare Mellor, photographs by Louise Guron



From left: Tinkerbelle, Pirates and The Darling Family.

Puzzle Corner Answers

4 x 4

EAT, GET, RUN, PIG – can all be followed by “OUT”

WHO, RIP, ETA, PSI – common acronyms (World Health Organisation, Rest In Peace, Estimated Time of Arrival, Pounds per Square Inch)

ATE, TOO, WAN, FOR – sound like numbers (8, 2, 1, 4)

WHY, ARE, EWE, TEA – sound like letters (Y, R, U, T)

February anagrams

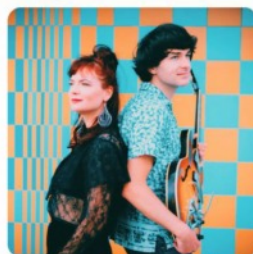
URN, RIOT, YACHT, ASPIRE, FUNFAIR, BEANPOLE, ENTRANCES, RACECOURSE

The Music of Leonard Bernstein: Rob Barron Trio**Saturday 1 March | 7:45pm**

Rob Barron's acclaimed trio, with guest vocalist Emma Smith, perform their own interpretations of the hits from Bernstein's unforgettable music theatre, including *West Side Story*, *Candide*, *On The Town* and more

**Elina Duni & Rob Luft****Saturday 8 March | 7:45pm**

The inimitable Albanian-Swiss singer and BBC New Generation guitarist return to the Granary with their trademark blend of folksong, jazz, chanson and Broadway ballads, engulfed in a warm Mediterranean sound

**Consone Quartet****Sunday 9 March | 3:00pm**

Schubert's turbulent *Death and the Maiden* and Mendelssohn's Quartet in E flat from this period instrument award-winning quartet, fast making a name for themselves for their expressive interpretations of Classical and Romantic repertoire

**Lady Maisery****Wednesday 12 March | 7:45pm**

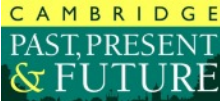
Exquisite vocal harmony from three renowned multi-instrumentalists, combining arrangements of traditional folk music with their own compositions

**Ronan O'Hora, piano****Saturday 22 March | 7:45pm**

A programme of Schubert and Chopin from this most distinguished of British pianists, whose recording and performing career spans four decades.

Booking: www.staplefordgranary.org.uk | 01223 849004

Wandlebury events



HERE'S a selection of what's on at Wandlebury. For more information about these events and events at other locations visit cambridgeppf.org/whats-on or call 243830 extension 307.

Volunteer Work Party - Tuesday 4 March, 10.30am to 1.30pm. Help care for green spaces and their wildlife - get active, meet others and enjoy learning rural practices at the same time

Outdoor Mini Retreat - Friday 14 March 10am to 12pm. Led by Beckie, a trained Life Coach and Hypnotherapist, this is the first of a series of new mini outdoor retreats at Wandlebury. £24 per session. Email beckie@cloudlesskycoaching.co.uk to book.



Sawston Cinema

Thursday 27 March 7pm (doors open 6.30pm) £10

Dr Strangelove (Rating 12) - National Theatre filmed live 150 minutes

WHEN a rogue U.S. General triggers a nuclear attack, a surreal race takes place, seeing the Government and one eccentric scientist scramble to avert global destruction.

Seven-time BAFTA Award winner Steve Coogan (Alan Partridge, The Trip) plays four roles in the world premiere stage adaptation of Stanley Kubrick's comedy masterpiece.



**Marven Centre, Sawston Village College, New Road, Sawston CB22 3BP,
Tel: 712825, email: cinema@sawstonvc.org**

Financial difficulties?



Are you in need, hardship or distress? Do you live in Stapleford? Then the Feoffees Charity may be able to help you.

For more information contact Rev. Simon Taylor at simontaylorstandrews@gmail.com.



FREE no obligation quotes and advice provided

My Village Handyman Services



- DIY repairs and odd jobs
- Painting & Decorating
- Tiling & Flooring
- Gardening, Landscaping,
- Patios & Decking
- Fencing and sheds
- Kitchen & Bathroom installation
- Brickwork, Dry Walling and Small Builds
- Carpentry and Plumbing
- Window and Gutter cleaning
- Jet wash and Patio cleaning
- Rubbish clearance and Tip runs
- Carpet cleaning and Wood Floor staining
- New doors or locks
- Security and Garden lighting
- **No job is too Small or too Big!**

Your very local handyman!

Contact Steve to arrange a visit or quote

07500 876376 or 01223 881700

Email: steve@myvillagehandyman.com | Web: www.myvillagehandyman.com



Reconnect to your life

Whatever your hearing difficulty, angli-EAR Hearing uses the most up-to-date tests and equipment to find the best solution for you.

Independent audiology experts you can trust

- Hearing Assessments
- Ear Wax Removal
- Hearing Aids
- Tinnitus Solutions



Book your **FREE** ear health check today



Where to find us:
Audiology House (Cambridge)
15 Woollards Lane, Great Shelford, Cambridge CB22 5LZ



01223 661399
info@angliearhearing.co.uk

BOOK ONLINE www.angliearhearing.co.uk

March at Great Shelford Library

MARCH is Women’s History Month, raising awareness of the contributions women have made to events through history and society. Come and browse our display of books celebrating women’s achievements.

Science Week is 7 to 16 March, we will have a science themed craft activity on Saturday 8 March.

Shakespeare Week is 24 to 30 March, we will have a Shakespeare themed craft activity on Saturday 29 March.

We will be running the following events in March:

Craft and Chat - Every Friday morning 10.30am to 12pm. No need to book.

Tea and Tablets - Every Tuesday afternoon 2pm to 4pm. Do you have a digital question, or have a query about your digital device? Come and chat to our friendly, knowledgeable volunteer who will hopefully be able to help. No need to book.

Engage Talk - Wednesday 26 March, 2pm to 3.30pm. Tony Kirby - Market Towns of East Anglia. A donation of £2 is appreciated. Please stay for a drink after the talk. Please pre-book in the library or via Cambourne.referral@cambridgeshire.gov.uk

Stay and Play - Thursday 6 and Thursday 20 March 2pm to 3.30pm. For children aged 0-3 years. A relaxed drop-in session for families with young children, £2 per family. Toys provided.

Story, Rhyme and Duplo Time - Every Tuesday at 10.30am. For children aged 0-4 years. Come and enjoy stories and rhymes led by our wonderful volunteers. This is a free drop-in event. Parents and carers must stay with your children.

Art Club - Every Saturday morning 10.30am to 12pm. Suitable for ages 4-10 years. Drop-in event. £2 donation. Parents and carers must supervise their children at all times. **Mel Abbiss – Community Librarian**

Library opening hours

Monday	3pm-7pm	Friday	10am-1pm and 2-6pm
Tuesday	10am-1pm and 2-5pm	Saturday	10am-1pm
Wednesday	10am-1pm	Sunday	Closed
Thursday	Closed		

FOOT PROBLEMS?

Call **07939 227195**

Foot treatment in the comfort of your home

Treatments cover:

- Nail Cutting and other nail conditions
- Corn and callus removal/reduction
- Fungal infections and athletes foot

Celia Kenney

HCPC Registered Podiatrist

The Beechwood Practice | 41 Hills Road
Cambridge CB2 1NT
Call **01223 315541**



PIANO LESSONS

Jacqueline
Cairnduff
CT ABRSM ALCM

All ages welcome.

Also aural training & theory.

2 Sternes Way,
Stapleford CB22 5DA

01223 842912

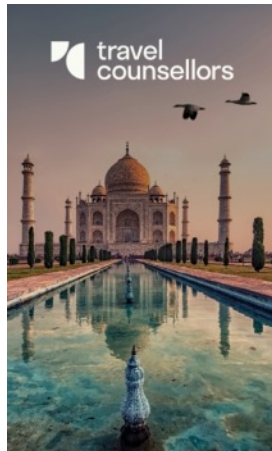
jcairnduff@hotmail.co.uk

THE GAS SPECIALIST LTD (D Hatter)

Service, installation, and repair of all domestic gas appliances: cookers, fires; specialist in boiler repairs and servicing.

Gas Safe Reg 131405. Est 1994.

01223 844866



Check-in time?
Whenever you need us.

24/7 support no matter where you are, or what time you need us. At travelcounsellors we're all about you. Your needs wants and aspirations for far-flung celebrations - coupled with personal service beyond compare - you can always rely on me.

Cheryl Harradine

TRAVEL COUNSELLOR

01223 842670 / 07742272131
cherylh@travelcounsellors.com
www.travelcounsellors.com/cheryl.harradine

★ Trustpilot **★★★★★**

STEVE the PLUMBER

Steve the Plumber is a friendly, reliable, locally based plumber who would love to help you out! All those jobs you thought weren't worth getting someone out for I would love to do for you.

No job too small and individually priced at great rates.

07803 922517 or www.stevetheplumbersawston.co.uk.

CHIMNEY SWEEP

J. L. WIGHT

Guild of Master
Chimney Sweeps



Certificates issued.

Advice given /
problems solved.

01954 253315

www.camsweep.co.uk

9 Cow Lane, Rampton

Annual General Meeting of the Friends of Great Shelford Library



THE meeting on 21 January began with a fascinating talk by Ally Clarke on the Cambridgeshire Mobile Library Service and the valuable service which it provides around the villages for people who cannot get to a static library. There are three mobile libraries, each carrying 3,000 items of stock and stopping at around 100 villages and communities each month. The buses carry not only books but hearing aid batteries,

stamps and 'phone cards to top up pay-as-you-go 'phones. Local stops include Cox's Close in Stapleford, Orchard Road in Great Shelford and Church Street in Little Shelford.

As well as the usual meeting business, a fond farewell was wished to Daphne Sulston who has coordinated the library volunteers' rota for the last thirteen years and looks forward to a well-earned retirement. She is shown here receiving flowers and a voucher from Helen Harwood, chairman of the Library Friends committee.



The meeting concluded with mulled wine, cakes and biscuits and informal conversation. Thanks to all those who attended on a cold January night.

Sarah Coppendale

Cambridge Flower Club

Thursday 20 March, 7.15pm, Refreshments 6.45pm

Elizabeth Robertson NAFAS Demonstrator: 'First Days of Spring'

Whittlesford Memorial Hall, Whittlesford CB22 4NE

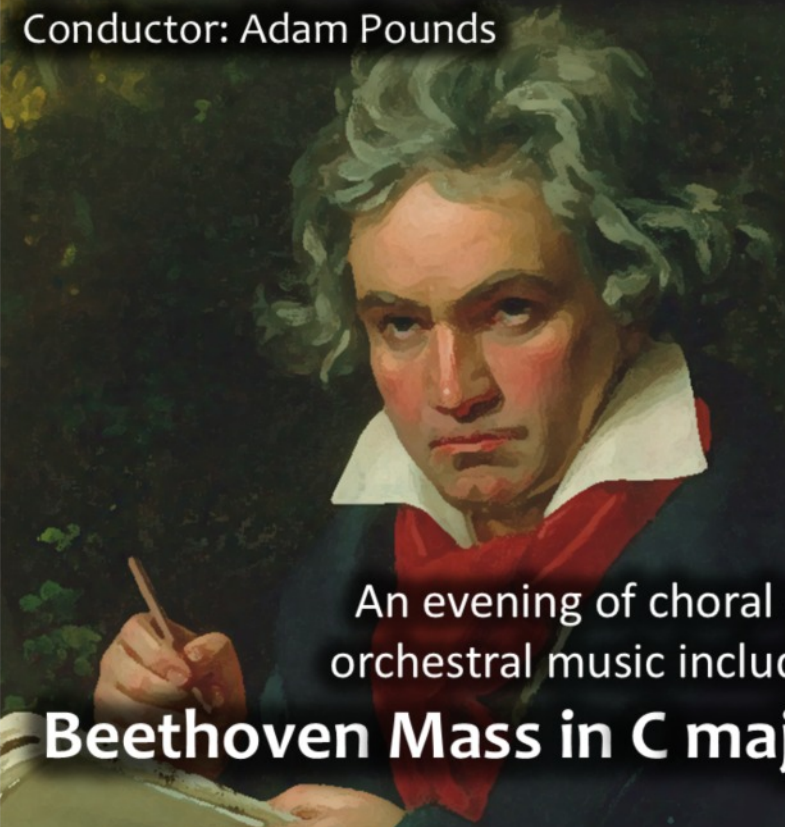
Annual subscription £40. Visitors £9 each meeting

Further information from co-chairs: Freda Orgee - 891464, fredaorgee@gmail.com or Alison Drake - 840117, drakealisonn@gmail.com

STAPLEFORD CHORAL SOCIETY

ACADEMY OF GREAT ST MARY'S ORCHESTRA

Conductor: Adam Pounds



An evening of choral and
orchestral music including

Beethoven Mass in C major



7.30pm Saturday
29th March 2025



St Mary's Church
Sawston CB22 3JR



£12 adults,
under 16's free

staplefordchoral@gmail.com www.staplefordchoral.org.uk

David Adams (1944 -2024)



ON 20 December more than 300 people gathered at All Saints Church and Little Shelford Memorial Hall for the funeral of David Adams.

David was born in Kirkcaldy in Fife. His early love of music was nurtured at home leading him to study music at the University of Edinburgh.

David and Trish were married in Edinburgh in 1966 and not long after moved south to Cambridge. He became head of music at Sawston Village College and soon began to play an increasingly significant role in the musical life of the local area.

David was at SVC for 30 years, during this time he inspired and encouraged generations of pupils, his colleagues in the department and many students on placement from Cambridge University. David was also the musical director and pianist for numerous productions by local groups such as Sawston Youth Drama, Sawston Light Opera Group, Duxford Workshop and Little Shelford Pantomime. Following his retirement in 1996 he worked as an OFSTED inspector, was instrumental in devising the music curriculum at a national level and was chair of a board of examiners for GCSE music.

David began playing church organs at the age of eleven. He first played the organ at All Saints, Little Shelford on 27 February 1974 for the funeral of the former organist. Following that service he agreed to help out at Sunday services for a 'little while' – and continued to do so for the next 50 years until he became ill in the autumn.

David's musical reputation was such that he was often called on to play for weddings or funerals in many other churches – sometimes as far afield as Norfolk. His own musical 'appetite' was often satisfied by listening to choral music in Ely Cathedral or King's College Chapel.

David was outgoing and sociable – traits that will be remembered by his family, friends, musical associates and also by customers of the Rose in Stapleford and the former Navigator in Little Shelford.

David's last weeks were spent in the Arthur Rank Hospice at Shelford Bottom. David was comforted by his faith and both he and his family were grateful for the compassion and empathy shown to them which helped them to face such a difficult time without fear or worry.

David is survived by his three children, Ruth, Mark and Pete and his brother Hadyn. He will be sadly missed but his musical legacy will live on in the talents he fostered in so many individuals. **Polly Stanton** - From words spoken by Mark Adams at David's funeral.



DAVID FOX CARPENTRY

*PURPOSE-MADE
JOINERY AND
FITTED FURNITURE*

Unit 4, Granta Terrace,
Stapleford
Cambridge
Tel: (01223) 845143



Specializing In Electrical
Work Within Domestic
Installations

36 Haverhill Road, Stapleford,
Cambridge CB22 5BX

07704493920
enquiries@scpelectrical.co.uk



Place an ad here
and promote your
company to an estimated
readership of over 1,800!

Contact us today at:

stapleford.ads@gmail.com

Rothwell's
Carpet & Stone Floor Cleaning

01223 832 928
www.Rothwells.biz

Carpet, Stone, Upholstery and Rug Cleaning

Rothwell's has been in business since 1993.

We're an honest local family firm.

Our large truck-mounted machines mean more
cleaning and drying power.

Members of both the NCCA and TACCA.

We will move the furniture for a thorough clean.
100% satisfaction or it's FREE.

*Call Oliver and Max Campbell for expert help
today.*

DAY

CHARTERED
CERTIFIED
ACCOUNTANTS

Do you want more control over your business accounts, or want to organise your personal tax situation more effectively?

We are a friendly team of qualified accountants who can help you reach the potential of your business and give you expert professional accounting and tax advice using the latest technology to work for you in achieving your goals.

We can deal with all matters relating to business tax and accounting including online bookkeeping, VAT

and PAYE matters. Bespoke all inclusive packages are available from £145 plus VAT pcm.

Private clients can be confident that we will deal efficiently with tax return preparation and all aspects of tax planning.

To arrange an informal chat or a meeting please contact us at:

Quern House, Mill Court, Great Shelford, Cambridge, CB22 5LD

T: 01223 506533 F: 01223 363810 E: hello@day-accountants.com W: www.day-accountants.com

Royal British Legion



THE Sawston and District Branch of the Royal British Legion held a Dedication Service for our new Standard on 28 January at St Mary's, Sawston. Our old Standard was offered and accepted by Mary Challis House and now forms a part of their displays

highlighting the bond between the RBL, the community, our veterans and the commitment to remembering our war dead.

Events in March:

Breakfast Club Saturday 22 March, 9.30am. At the Plough, Duxford.

Quiz Night Saturday 22 March, 7.00pm. At The Greyhound, Sawston. Teams will consist of 6 players and the cost to each team member is £5. Anyone wishing to make up a team and come along, please make contact to book in their team with the Chairman – John McCarthy on 07496 876264.

The Sawston and District Branch Meeting Wednesday 26 March, 7pm. You do not have to be a veteran to join the Legion and anyone interested in what we do is more than welcome to attend. **John McCarthy, Chairman, Sawston and District Branch**



Great Shelford Bowls Club



APRIL will again see the start of the 2025 Bowls Season with our Open Day and Coffee Morning on Saturday 19 April, starting at 10.30am.

If you want to consider taking up a new hobby, please come along on 19 April when you will be welcome to have a go at bowling. If you cannot make the Saturday then please come along on Sunday 20 April at the same time when we will be having a practice day.

You may find that you would like to join the club and also enjoy the friendly atmosphere on many of our club nights.

Go to our website greatshelfordbowlsclub.co.uk or contact:

Gill Taylor/Secretary on 07581 079420 or Graham White/Chairman on 07740 031713 for more information. **Gill Taylor**

ACE CULTURAL TOURS

Travel for the culturally curious

Join us to discover cultural
connections across a wide
range of subject areas
and destinations

aceculturaltours.co.uk | 01223 841055

Stapleford Granary, Bury Road, Stapleford, CB22 5BP

ACE Cultural Tours Ltd is wholly-owned by The Association for Cultural Exchange
(registered charity number 279567), founded 1958. ATOL 10204 | ABTOT 5237

The Travelling Companions, Augustus Leopold Egg, 1862. Birmingham Museums Trust via Unsplash.

Arthur Rank Hospice Charity



FLORAL Wreath Making Workshop Friday 4 April 6.30pm to 8.30pm or Saturday 5 April 10.30am to 12.30pm. Following the success of the festive wreath-making workshop, which

raised over £3,000 for hospice services, Arthur Rank Hospice Charity are excited to announce their first Spring Wreath-Making Workshop led by Eco-Florist Flora Laura Flowers. Just in time for Easter, book your place by visiting arhc.org.uk/whatson or call 675888.

Pick up pre-loved items at bargain prices

Arthur Rank Hospice Charity now has ten retail premises with shops in Burleigh Street, Mill Road and Regent Street in Cambridge, Cottenham, Ely, Great Shelford and a Retail Hub and Outlet, in Pampisford/Sawston, where you can find bargain clothes, bric-a-brac and furniture! Do your bit for your local community (and the planet) and recycle/upcycle by donating or purchasing preloved items. **Hannah Touhey - Voluntary Services Manager**

Film evening

THERE will be a Little Shelford Memorial Hall film evening with a showing of *Paddington in Peru* on Saturday 29 March. Doors open at 7pm for a 7.30pm start with a break for supper of pizza and salad.

Paddington in Peru is a 2024 live-action animated adventure comedy film. It is the third instalment in the *Paddington* film series, which is based on the *Paddington* stories by Michael Bond. The film stars Hugh Bonneville, Emily Mortimer, Julie Walters, Jim Broadbent, Carla Tous, Olivia Colman, Antonio Banderas and Ben Whishaw as the voice of Paddington.

Tickets (£15 per person) will be available from Sarah Coppendale: 842498, coppendales@btinternet.com and Diana Haines: 841415, dianahaines42@icloud.com. Please book by Wednesday 26 March so that sufficient food can be ordered.



Parish Council Chair's report for February

SAWSTON Greenway was discussed at the February Parish Council meeting. Plans for the route through Stapleford are being finalised but the start date for the work is not yet known, although likely to be in May. Work will start by the Spar shop, remodelling the cycle and pedestrian route in front of the shop to make it safer for both cyclists and pedestrians with separate pathways. The bus stop will be moved from its present position to a position nearer Adcroft Piece. The present bus shelter which is about 90-100 years old but in sound condition, will remain. It is to be repurposed for the village so ideas for its new use should be submitted to the clerk. A new wooden bus shelter with glazed sides will be placed at the relocated bus stop.



7 March is the deadline for submitting comments about the planned 5 mile busway between Babraham and the Biomedical Campus. If you feel strongly about this proposal, either for or against, submit your objections urgently. Stapleford Parish Council along with other bodies and individuals is supporting, on your behalf, objections to this proposal. Some parishioners attending the Parish Council meeting were concerned at the cost of legal action which may be unsuccessful. Sponsors along with the Parish Council are Hobson's Conduit Trust, The Magog Trust, Cambridge Past Present and Future and Stephen Partridge Hicks. A cap of £50,000 costs for the Parish Council has been agreed with these sponsors (who are pledging different amounts) agreeing to work together to instruct Buxton's solicitors, and to fully contribute to Stapleford Parish Council's costs. The Parish Council costs will be taken mainly from reserves, not from the precept.

Work is planned on the unstable grave markers in the cemetery. Where they cannot be made safe upright, they may be laid flat, level with the grass to enable grass cutting. Efforts have been made to contact those responsible for maintaining the grave markers for the last six months, with some success. Work is also planned on the benches around the village, some of which may need replacing because of their poor condition.

The Tree Project Group has been working hard planting more than 100 trees around the village, including on the school field. Trees planted by the group are marked and protected. A presentation from the group will be

made about the excellent work done so far at the next Parish Council meeting.

Plans are currently being submitted for the Pavilion refurbishment, but no start date for the work is available yet. Notice will be given in advance of the works.

The next Parish Council meeting is on Thursday 6 March at 7pm in the Pavilion. Members of the public are welcome. This is your opportunity to air your views and to hear about the Tree Project. **Gillian Pett**

Neighbourhood Plan update: independent examination of our Plan begins



THE final public consultation on the Stapleford and Great Shelford Neighbourhood Plan (NP) – the so-called ‘Regulation 16’ consultation, run by the Greater Cambridge Shared Planning (GCSP) service on behalf of SCDC – wrapped up on 12 February. This was effectively a last opportunity for those who submitted comments to the Reg. 14 consultation in 2024 to see how/whether their feedback had influenced development of the submitted Plan.

Whilst the Reg. 16 consultation was ongoing, GCSP tendered for an independent examiner for our Plan, with the NP steering group and Stapleford and Great Shelford Parish Councils choosing Andrew Ashworth from the short-list of four. Mr Ashworth is a very experienced examiner of more than 300 NPs, including several for areas not too far from us (most recently, South Newnham NP and Pampisford NP). From our perspective, there is a degree of overlap between the kinds of policies in these NPs and in ours, and an understanding of the broader planning environment and pressures in our region can only be helpful.

The role of an independent examiner is defined in legislation: to determine whether a submitted Plan meets the basic conditions and Convention Rights and other statutory requirements. In doing this, they will visit the NP area, consider the content of the Plan and, where necessary, recommend changes to its policies and supporting text. The resulting report will also recommend whether a Plan should proceed to local community referendum. More information about the legal requirements of NPs and the

examination process is available at neighbourhoodplanning.org/toolkits-and-guidance.

All Reg. 16 consultation comments have been fed back to the NP steering group and it is now our job to review them and, where required, justify our approach to the independent examiner. The majority of comments arise from land agents reiterating the forceful objections they made at Reg. 14 consultation to several of our NP policies. Remember that NPs cannot prevent development, but they can shape it to meet local needs. It is this which often leads to an impasse between what a community aspires to for its future and the development potential that land agents seek to optimise for their clients. **Jenny Flynn Chair, Stapleford and Great Shelford Neighbourhood Plan steering group**

Last chance to save our local countryside!

Object by 7 March



BETTER Ways for Busways! (see below) opposes plans for a 5 mile busway from Babraham to the Biomedical campus. You can support our cause by putting your objections in writing to the Secretary of State for Transport by sending an email to transportinfrastructure@dft.gov.uk or c/o

Transport Infrastructure Planning Unit, Department for Transport, Great Minster House, 33 Horseferry Road, London, SW1P 4DR.

Doing this will help to show the government the strength of support for our alternative and against the plans put forward by the council.

To do this you should:

- Send your response **by Friday 7 March**.
- State who is making the objection.
- Include your postal address (even if responding by email).
- State the grounds of your objection. We would recommend that you include any of the following but written in your own words:

Title of letter/email: Objection to Transport and Work Act Order to the Department for Transport (DfT) for a new busway to the southeast of Cambridge

I... (Name) of Postal Address am writing to make a formal objection to the "Application for a Transport and Work Act Order to the Department for Transport (DfT) for a new busway to the southeast of

Cambridge”, as submitted by the Cambridge Greater Partnership on 9 January 2025.

Some ideas you could include for your objection:

The construction of 5 miles of new road through open countryside is unnecessary to deliver improvements in transport. Similar transport and economic benefits can be achieved by building a version of the scheme first proposed by the GCP in 2018. This would involve building sections of bus lane adjacent to the A1307 and 1 mile of new road (busway).

This alternative would avoid building two bridges over the River Granta chalk stream and putting Hobson’s Conduit chalk stream into a culvert.

This alternative would avoid creating a scar in the Gog Magog Hills landscape, one of the most important landscapes in the Cambridge area.

This alternative would avoid building a new road through a countryside park, to the detriment of its future users and nature.

This alternative would avoid severing fields close to villages making them vulnerable to future development and further harm to the countryside.

This alternative would better serve the planned expansion of the Cambridge Biomedical Campus and serve more of the Campus.

Cycle routes in this area are already under construction and include the Linton Greenway which will connect Cambridge to Babraham, Granta Park and Linton; and the Sawston Greenway that will connect Cambridge to Sawston. Stapleford and Shelford are already served by the DNA cycle path.

You might also give your view on how likely you (or your fellow villagers) might be to use the proposed 5 mile busway. The GCP say the main reason they have chosen that route is to serve the villages but the bus stops are on the edge of the villages uphill.

We are actively fundraising for the costs of our team of transport, environmental and legal experts who have been hired to defeat the GCP’s awful scheme. Please consider making a donation at app.sheepcrm.com/cambridgeppf/appeals

For more information visit our website bw4b.org. Together, we can get a better solution that improves transport and the economy without destroying the countryside. Thank you for standing with us at this critical moment. **Howard Kettel - Better Ways for Busways**

Better Ways for Busways! is a single purpose, non-political, campaign organisation to reflect the views of local people, Parish Councils, environmental and heritage groups to the GCP.

Stapleford Parish Council

staplefordparishcouncil.gov.uk



COUNCILLORS

Gillian Pett (Chair)	gillian.pett@staplefordparishcouncil.gov.uk
Howard Kettel (V Chair)	howard.kettel@staplefordparishcouncil.gov.uk
Mick Davies	mdavies@staplefordparishcouncil.gov.uk
Anna Disley-Stevens	annadstevens@staplefordparishcouncil.gov.uk
Matthew French	mfrench@staplefordparishcouncil.gov.uk
Michael Gatward	michael.gatward@staplefordparishcouncil.gov.uk
Michelle Green	mgreen@staplefordparishcouncil.gov.uk
Barbara Ann Kettel	bkettel@staplefordparishcouncil.gov.uk
James Northmore	jnorthmore@staplefordparishcouncil.gov.uk

CLERK

Max Barrett 07472 398823 clerk@staplefordparishcouncil.gov.uk

SOUTH CAMBS DISTRICT COUNCILLORS

Peter Fane, 27 London Road, Great Shelford CB22 5DB
peterfane1@live.co.uk 843861 / 07802 256 861

Will Jackson-Wood
cllr.jackson-wood@scambs.gov.uk 07873 731597

CAMBRIDGESHIRE COUNTY COUNCILLOR

Brian Milnes
brian.milnes@cambridgeshire.gov.uk 07971 886 113

Stapleford Parish Council normally meets publicly on the first Thursday of every month. Please check our website for the latest details



PANTHER
01223
715 715

WIDE RANGE OF VEHICLES AVAILABLE 24/7
INCLUDING 5-8 SEATERS

METERED RATES TO SURROUNDING AREAS

DOWNLOAD OUR BOOKING APP

Available on the App Store


ANDROID APP ON Google play

Poorly PC?

The PC Doctor will get your PC back in tip-top health and squeaky clean!

PC Doctor Edward
(your local computer GP)

07929 660981



PEASGOOD & SKEATES

THE FAMILY FUNERAL SERVICE

All types of funeral carried out with the highest standard of service and care

45 Moorfield Rd
DUXFORD
01223 833463

48a High Street
SAWSTON
01223 791065

also in Cambridge, Haverhill and Saffron Walden

www.peasgoodandskeates.co.uk



green | weigh

minimal waste shop

60 High Street, Sawston, CB22 3BG

Minimal waste shop aiming to support people in reducing single use plastic & food waste.

Refill liquids & dried foods, storecupboard essentials, gifts & toiletries

Vegan, cruelty free with a wide range of organic & gluten free products.

Contact us via email
hello@greenweighshop.co.uk
Follow us on Facebook/Instagram:
@greenweighshop
Website: www.greenweighshop.co.uk

JASON KIRBY

Professional Painting & Decorating Ltd

All Aspects of Internal & External Decorating
Period, Residential & Commercial Properties.
Wallpaper & Mural Install
Kitchen Cabinet & Furniture Re-Sprays.
Floor Sanding & Restoration.
City & Guilds, NVQ Qualified.
Service, Quality & Reliability.



01954 211775
www.jasonkirbyltd.co.uk

The award winning Zara Indian Cuisine is the favourite choice for delicious Indian food, offering dine-in and takeaways.

Zara Indian Cuisine offers a sophisticated yet relaxed dining experience.







RESERVATION & ORDER ONLINE
www.zarashelford.com

1 Hintze Way, Great Shelford, CB22 5AX

01223 846 668 / 01223 844 244



KITCHENSMITHS

4 STATION ROAD, HISTON, CAMBRIDGE, CB24 9LQ

01223 236 456

info@kitchensmiths.co.uk

www.kitchensmiths.co.uk

