

Stapleford

Ne Nuntium Necare!

MESSENGER

October 2024

Volume 83 No 10

Price 90p

Karen Jinks



Photo - Ian Olson for Indie Cambridge - see page 30

The Messenger is the Parish magazine for the whole community of Stapleford

Bush & Co.

What moves you,
moves us.

Book a free valuation today

Scan the QR code below

Sales: 01223 246 262
Lettings: 01223 508 085
www.bushandco.co.uk



Bespoke Curtains & Blinds

suecrowcurtains.com



01223 836498

GREAT SHELFORD

RICHARD DAVIES

solicitor & advocate

Most areas of law practised for
individuals and businesses

free and easy parking
01223 842211

30 Wollards Lane – Great Shelford
www.richarddaviessolicitor.co.uk

T&J

Tyres & Autocentre

**WE ARE NOW IN A NEW LOCATION.
CALL US FOR A FREE QUOTE TODAY!**

- New tyres
- Part-worn tyres
- Wheel balancing
- 4-wheel alignment
- Locking wheel nut removal

**ALL WHILE
YOU WAIT**

- Servicing
- Brakes fitted
- Shock absorbers
- Exhaust repairs
- Diagnostics
- Batteries
- Engine carbon cleaning
- Air conditioning
- And more...

Opening hours:

Mon-Fri: 09:00-18:00

Saturday: 10:00-16:00

Sunday: CLOSED

**01223
845155**

Unit 2, Hillstead Farm, Hinton Way, Great Shelford, Cambridge, CB22 5AN



WATERLILIES

SKIN CLINIC • BEAUTY

Call **01223 844700**

Book online at

www.waterlilies.org.uk

2d Dolphin Way, Off London Road, Stapleford, CB22 5DW

RUSSELL COOPER GARDENING

(QUALIFIED HORTICULTURIST EST 1987)

**ALL ASPECTS OF GARDENING
WORK CARRIED OUT BY A
PROFESSIONAL LOCAL
BUSINESS**

**MONTHLY MANAGEMENT
OF YOUR GARDEN
UNDERTAKEN**

**Tel: 01223 830575
Mobile: 07702 456797**

Who's who at St Andrew's

www.standrewstapleford.org

Vicar

Rev Dr Simon Taylor 840256

Curate

Rev Lucinda Howard 07763 477821

Churchwarden

Alastair MacGregor
07855 269844

Parish Safeguarding Officer

Rob Needle 844227

Parish Administrator

Gillian Sanders 07752 373176

Youthworker

TBA

Children's Ministry

Sue Brown 01954 602248

Director of Music

Tim Kwan 07745 803972

PCC secretary

Nicky West 07927 531719

Treasurer

Chris Bow 841982

Verger

Clare Kerr 842984

Captain of bellringers

Tony Smith 843379

Church flowers

Jackie Nettleton 721366

Stapleford-Nachingwea Link

Trish Maude 242263

Mothers' Union

Hilary Street 840548

Johnson Memorial Hall

Gillian Sanders 07752 373176

Friends of St Andrew's

Tony Hore 843796

Gift Aid secretary

Lisa MacGregor 07523 668731

SERVICES at St ANDREW'S

See the St Andrew's Noticeboard for this month, and the church website at standrewstapleford.org for full details. The services include:

9am BCP or CW Communion

10.30am Communion, Services of the Word, Messy Church and Forest Church

SERVICES AT OTHER CHURCHES

Our Lady of Lourdes, Sawston (Roman Catholic)

Sundays 8.45am and 11.15am

Shelford Free Church (Baptist)

Sundays 10.30am

Christenings and Weddings

Christenings take place during Sunday worship.

For both Christenings and Weddings, contact the parish vicar.

Stapleford MESSENGER

Editor

Contact staplefordmessenger@gmail.com

Advertising

Contact stapleford.ads@gmail.com

Subscriptions/Distribution

Contact 843415 or vaz@fairshares.co.uk

The subscription for the Stapleford MESSENGER delivered to your home is £9 per annum (£25 by post): single copies 90p.

From the Rev Dr Simon Taylor

SITTING in bed recovering from my gall bladder operation – I can't in all honesty say that it has been a great trauma – I think about the huge numbers of people involved in making sure of the success of this minor marvel. It was not just the surgeon, the team and the nurses on the ward, but also the other hospital staff of all sorts: cleaners, porters, caterers and so on; plus those who designed and built the operating theatre so as to minimise infection and other risks, those who developed, produced and maintain all the clever kit used, and managers, regulators and law makers. Really, lots of people, with a common endeavour, namely to promote the good of others, of individual patients. Humanity can be really quite good at such things, this co-operative, long term, 'for the common good' stuff.



Which is why the Grenfell disaster is such a puzzle. There were not just isolated errors, but virtually everyone failed in the tasks they had been given. There was some wonderful heroism and compassion during and after the fire, but every death was avoidable.

The Inquiry found that the fire started because of an entirely foreseeable fire of a relatively modest size in an ordinary kitchen appliance. Within fifteen minutes the heat had deformed uPVC window panels such that hot smoke and flames entered the exterior cladding. The cladding panels were made of a potent fuel which spread the fire up, down and around the building. All measures meant to prevent the entry or spread of fire and smoke failed, and internal fire compartmentalisation measures were absent or ineffective. The fire brigade was alerted promptly and was present on the scene within five minutes of the first call, but nonetheless seventy-two people died.

The Inquiry concluded that from 1991 onwards various departments of government had failed to get to grips with the dangers posed by cladding, despite the risks being known. The department responsible for local government had displayed a complacent and defensive attitude, and concerns expressed by parliamentarians were met with a dismissive attitude. The Building Research Establishment (the privatised agency responsible for research and regulation of much building safety and for testing building materials) compromised its integrity by advising manufacturers how best to pass its testing, and failed to keep records needed to prevent its processes being manipulated. The companies

producing and selling the panels were systematically dishonest, and the statutory and commercial bodies meant to check their safety compliance failed to do so. The local authority's tenant management organisation was an uncaring and bullying overlord that belittled and marginalised the tenants and their safety concerns. Basic fire safety measures were not installed. The refurbishment of the tower that led to the installation of the cladding was driven by cost with no regard to fire safety. The fire brigade's preparation, training and planning for such fires was inadequate, and its operations on the night were poorly led. The local council failed in the aftermath to organise properly to help survivors.

The report is a chilling read. Many changes have taken place as a result of the fire, and there will be more as a result of the Inquiry. So there should be. But I doubt whether anything will be done – or really can be done – to tackle the problems at the heart of the disaster.

What were those problems? Most of the report is written in understated language, very effective, actually, in conveying the horror of what happened. But when the chair and wing members summarised their findings in the press conference they were slightly less guarded. There was, we were told, widespread incompetence, dishonesty and greed, buck-passing, bullying, manipulation and complacency. These were the real causes of what happened.

Once when Jesus was with his disciples, he and they were criticised for not keeping to the traditions and rules of the time about the particular way cooking implements ought to have been washed to avoid ritual impurity. He turned the criticism into a teaching session for his disciples. He said:

“Nothing outside a person can defile them by going into them. Rather, it is what comes out of a person that defiles them. For it is from within, out of a person's heart, that evil thoughts come – sexual immorality, theft, murder, adultery, greed, malice, deceit, lewdness, envy, slander, arrogance and folly. All these evils come from inside and defile a person.”

St Paul picked up this teaching – and earlier Jewish scripture from the Psalms – when he wrote: “There is no one righteous, not even one; there is no one who understands, no one who seeks God. All have turned away.”

This is pretty bleak stuff, but the Grenfell Inquiry makes Jesus and Paul look prescient and spot on. Human greed, deceit, arrogance, folly. All there, writ large, in the report. Human sin at its most widespread and pervasive, individual wrongdoing enabled, encouraged and embedded in sinful systems. That, to my mind, is where the Inquiry really lands, though it is not expressed as such. And that human sin impacted most, as it so often does, on the poorest and most vulnerable in society.

Now I am sure that much can be done to avoid a repeat by better regulation, and by reversing some of the wretchedly stupid and wicked privatisations of the last fifty years, but in the end the prevention of such human-made disasters lies with the only one who can cleanse and heal our human hearts and through his grace turn humanity from our inbuilt and corrosive desires.

The Inquiry does not recommend wholesale repentance, turning to Jesus Christ for his forgiveness, and seeking from now on to walk in step with the Holy Spirit, but perhaps it should.

A few people – just a few – in this system who truly loved God and neighbour, and who therefore felt compelled to call out the dishonesty, or check the fire safety, or listen to tenants' concerns, or take any one of a number of possible steps, might have averted the whole thing.

Absent such repentance and grace, we all know that another disaster, and another inquiry, and yet more devastating findings, are always just round the corner. That is humanity left to our own devices. So capable of marvels, yet so depressingly, predictably, bad.

Every blessing to you all, Simon

Memorial Service @ St Andrew's

A HEADS up for our annual memorial service for All Souls on Sunday 3 November at 6pm. This will be a wonderful Choral Evensong at which, amidst wonderful music and readings we will read out the names of those we have loved and lost and wish to remember. It is always a hugely moving occasion.

If you would like your loved one remembered, please get in touch with Gillian, our St Andrew's administrator, on admin@standrewstapleford.org. She will add names to the list. **Simon Taylor**



Looking for a local venue?

The Johnson Hall, next to St Andrew's Church, is an ideal venue for small groups and children's parties. The Hall is **available for hire** for one-off events and regular bookings.

For details please contact **Gillian Sanders**:

Tel: 07752 373 176 **Email:** admin@standrewstapleford.org

St Andrew's Noticeboard

6 OCT	9 AM	BCP COMMUNION
	10.30 AM	ALL AGE HARVEST FESTIVAL COMMUNION Joel 2.21-27; Matthew 6.25-33
7 OCT	7 PM	MONTHLY PRAYER MEETING
13 OCT	9 AM	BCP COMMUNION
	10.30 AM	SUNDAY WORSHIP Genesis 1.26-27; John 11.32-37 <i>Heresies 2: Docetism</i>
	10.30 AM	MESSY CHURCH
	6 PM	CHORAL EVENSONG Joshua 5.13-6.20; Matthew 11.20-30
20 OCT	9 AM	CW COMMUNION Hebrews 5.1-10; Mark 10.35-45
	10.30 AM	ALL AGE NACHINGWEA LINK CELEBRATION Mark 4.26-34
27 OCT	9 AM	BCP COMMUNION
	10.30 AM	SUNDAY WORSHIP Leviticus 19.1-2, 11-12, 17-19; Matthew 13.24-30 <i>Heresies 3: Donatism</i>
3 NOV	9 AM	BCP COMMUNION
	10.30 AM	CW COMMUNION FOR ALL SAINTS' DAY Deuteronomy 6.1-9; Mark 12.28-34
	6 PM	MEMORIAL EVENSONG FOR ALL SOULS' DAY Revelation 7.9-17; Matthew 5.1-12

The church is open every day as a place to come and pray or enjoy a moment of quiet reflection.

FROM THE REGISTERS

15 SEPTEMBER – Confirmations of Ondrej Gorol & Martin Ginger

OvenPad Cleaning Services

I will professionally and efficiently clean ovens, ranges, Agas, ceramic hobs, extractors, microwaves, and BBQs.

It's a dirty job, why not give me a call?

Please contact **Paddy Kelly** on

Tel: 01638 742703

Mobile: 0775 263 1343

Email: info@ovenpad.com
www.ovenpad.com

Neil's Gent's Hair Stylist

of Stapleford

Is offering professional gents' hairstyling at competitive prices

30 years' experience

4a Bar Lane, Stapleford

Call 01223 844411

for an appointment



Place an ad here and promote your company to an estimated readership of over 1,800!

Contact us today at:

stapleford.ads@gmail.com

Walk-in, movable, fox-proof chicken runs.

homesforhappyhens.co.uk



Shelford

Tree Service Ltd

**Professional Tree Surgeons
covering Cambridgeshire
and Hertfordshire**

Fully Qualified & Insured

01763 208361

07743406569

shelfordtreeservice.co.uk

Sarah Ashworth
GARDEN DESIGN

sarahashworth.co.uk

designs for life

Let me help you make the best of your outside space



07788466397

sarah.jane.ashworth@gmail.com

Star struck

FIRST a necessary explanation. Stars are enormous luminous balls of gas. They shine from internal energy, mostly hydrogen, gravity holding them together. They originate from gas and dust clouds called nebulae. Life cycles range unbelievably from a few million to trillions of years. The human eye sees only a small percentage of the beauty created. There are formations, 'The Plough' and 'Bear' being well known. Careful 'dot to dot' joining. The North star is bright but Sirius (meaning glowing or scorching) beats it. Astronomy feeds imagination. Skies surprise: secrets secure, needing patient unlocking.

'Twinkle, twinkle little star' stressing mystery is a childhood favourite. Parents encourage confidence, learning and helpfulness, through star charts. Teachers reward effort by graded stars; bronze, silver, gold. Sport is likewise and highly prized. Endearing remarks like 'My super star,' cheering and building morale. Drawing stars is fun. Two triangles, one on top of the other or a single line forming the shape. Simple patterns, great doodles. Star jumps happily performed.

TV programmes, films and shows are enjoyed. Star Trek, Star Wars and Starlight Express. Space where imagination soars. Costumes and characters cleverly created. Being star-struck is not difficult; pop stars, narrators, actors and more. Much pleasure is gained from music. 'Catch a Falling Star' and 'Starry Starry Night,' golden oldies. Tunes to hum contentedly. At Christmas, carols are sung whilst sporting colourful starry knitwear. 'We three kings' speaks of a star of wonder guiding yonder. 'Away in a Manger' dwells on stars looking down. It could be said that we have stars in our eyes.

Stars feature on some countries' flags. America has a star-spangled banner, Australia a special star splatter. Stars are symbolic in religion. The star of David has six points and much significance.

Descriptions, scientific detail and poetry, playfully reflect on space and stars. I offer two observations. At times drifts of mysteriously mournful mistiness appear, dimming or extinguishing stars. Maybe a message: Save Our Planet. Yet far from light and traffic pollution are wondrous rich dense black skies. Silvery shimmered sparkling stars appear pure as diamonds, glimpses of glory. **Judith Lee**

HARVEST FESTIVAL

Sunday 6 October
10.30 am

ALL WELCOME

donations of food collected for
Jimmy's homeless project



St Andrew
STAPLEFORD

www.standrewstapleford.org
- church for the whole community -

St Andrew's Church
Mingle Lane
Stapleford
CB22 5SY



A weekend celebrating our 43 years' partnership with Nachingwea in Tanzania

Music Concert at St Andrew's

5-6pm Saturday 19th October

On Saturday 19th October at 5pm come and enjoy a Concert of light music for all the family in the beauty of St Andrew's Church, when we will be entertained by the Homerton College Music Society and local musicians, followed by refreshments.

The concert is free but donations will be welcomed for our latest projects.



**FOR BOTH EVENTS:
Refreshments provided!**

Donations welcome!



MUSIC CONCERT:

**Saturday 19th
OCTOBER**

THANKSGIVING:

**Sunday 20th
OCTOBER**

Thanksgiving Service

10.30am Sunday 20th October

Join us in St Andrew's Church for a service of Thanksgiving and Celebration, with music and singing including some in Swahili!

Details of current and future projects in Nachingwea will be announced.

Followed by coffee, tea and refreshments.

St Andrew's Choir - Come and join us!

REHEARSALS
THURSDAY 7PM -8PM @
ST ANDREWS CHURCH

Contact - Timothy Kwan
07745 803972
music@standrewstapleford.org



St Andrew
STAPLEFORD

Deadline for the November Messenger

Please submit copy **NO LATER THAN FRIDAY 11 OCTOBER**

By email (Word or similar attachment) to staplefordmessenger@gmail.com
The *Messenger* reserves the right to edit material. Please include contact postal address with all letters to the Editor.

Advertising queries to stapleford.ads@gmail.com

Subscription queries to Valerie Powell on 843415 or vaz@fairshares.co.uk

The views expressed are those of the contributors and do not necessarily reflect the views of the *Messenger*.

Advertisements are accepted in good faith but customers should satisfy themselves that advertisers are able to supply the services they offer.

We're waiting for your story!

HAVE you a story to tell or an event to publicise? Or perhaps you have an opinion to share on an issue that is important to you. If so, drop us a line on staplefordmessenger@gmail.com - after all, it's your magazine and we would love to hear from you.



st Andrew
STAPLEFORD

www.standrewstapleford.org
- church for the whole community -

St Andrew's Church
Mingle Lane
Stapleford
CB22 5SY

Evensong

The Choir of Clare College
Cambridge

Friday 4 October 5 pm
free - all welcome



ON CHALLIS
Painter and Decorator

Tel: 01223 841646
Mob: 07939 607653

All types of interior and exterior work undertaken.

High-class quality workmanship guaranteed.

Great Value

KASH STORES

Local Service

A great deal more from your local store!

- General groceries • Fresh produce • Confectionery
• In-store bakery • Off-licence • Photocopying
• Newspapers, magazines & stationery • Lottery
• Dry Cleaning • Passport photos

Full Post Office counter facilities

33-35 Hinton Way, Great Shelford

Tel: 01223 843307

Shop opening times:

Mon-Sat:

7:00am - 8:00pm

Sunday:

8:00am - 6:00pm



Post Office opening:

Mon-Fri: 9am - 5:30pm

Sat: 9am - 1:00pm

Sun: CLOSED

ART OF
Flooring

**QUALITY FLOORING SUPPLY,
INSTALLATION & AFTERCARE**

Specialists in Wood Flooring, Carpets and
Luxury Vinyl Flooring Solutions

*"No matter how big or small the project is,
Art of Flooring makes sure they take their time to
understand our needs and budget for the specific
project and offer us their expert advice on
the most suitable product solution.*

We would highly recommend Art of Flooring."

Bernard S, Cambridge

141 Milton Road Cambridge CB4 1XE
01223 755 802 www.artofflooring.co.uk

The Country Store

Animal feeds, bedding and accessories,
shooting requirements and country clothing



Visit our
online
store!

www.thecountrystore.co.uk

Unit 12a, Sawston Trade Park, Pampisford,
Cambridge CB22 3EE.
01223 837977



LYNNE HORTON
INTERIOR DESIGN

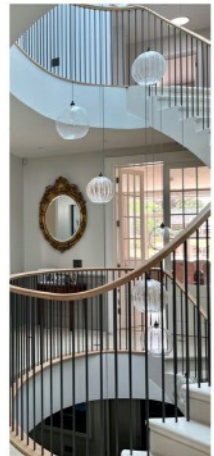
- CURTAINS & BLINDS
FURNITURE & JOINERY DESIGN
UPHOLSTERY & SOFT FURNISHINGS
COLOUR & FABRIC SCHEMES
BATHROOM DESIGN
FURNITURE & LIGHTING SOURCING



www.lynnehortondesign.com

lynne@hortondesign.org

07703816370



Mothers' Union News



THE Branch is holding its Autumn Coffee Morning on Thursday 24 October, 10.30am to 12 noon, at Jacque Chalk's, Brooklands House, Heffer Close. There will be a Bring & Buy and a raffle. All are most welcome to attend! **Hilary Street**

Women's Institute



RECENTLY I was in Saffron Walden and spent much of the time walking between shops and around the marketplace looking up! This was because at the end of her very interesting and informative talk about the history of Saffron Walden, our speaker in August, Sarah Fitzpatrick, had suggested we do exactly this to appreciate the many good examples of different styles of architecture which exist in the town. Sarah has been a Blue Badge guide for thirty years. Using her expert knowledge she was able to provide us with a condensed version of the fascinating history of this market town, illustrating her talk with slides.

Following this we had a break for refreshments when the entries for the Rose Plaque were judged by our visitor. A horticultural photo or picture was the requirement. This year Sallie Dixon was awarded first place for her dramatic photo of poppies growing along the verge on the walk from Stapleford to Babraham with crops behind and a black sky overhead.

During the business section of our meeting we were reminded once again of the many and varied activities available to members not only by our own WI group but also by the Cambridge Federation (CFWI), which offers all sorts of outings and events to the area's members. We ourselves have a book group and a craft group which both meet regularly, and a session where members come together to knit for charity is also recommencing this Autumn. The CFWI arrange outings and events included craft days plus a trip to the Knitting and Stitching Show in London, walks, theatre outings, and various events including a speaker. If any of these types of activities interest you and you would like to find out more about the WI and our local group in the village, then please see our webpage at staplefordwi.weebly.com or phone Sallie Dixon on 843847. You are very welcome to attend a meeting as a visitor. We meet in the Pavilion on the fourth Thursday of each month (excluding December). We are hosting a speaker in October, Brian Saddington, who will talk about 'Life and Times at the Fire Brigade'.



*Award winning
free house & restaurant
in the heart of the village*

01223 503 402

@hello@threehorseshoes-pub.com

www.threehorseshoes-pub.com



Elevate Your Health

First class Osteopathy treatments are now available on Sawston High street, just 3 miles from Duxford.

We are proud to provide care for:

- Sciatica
- Lower back pain
- Neck and shoulder pain
- Sports injuries, particularly running injuries
- And more!

If you're struggling with an injury that's not improving, get in touch to see how we can help.

Run by local Osteopath Daniel Collis M.Ost, registered with the General Osteopathic Council and a member of the Institute of Osteopathy.

61a High St, Sawston, CB22 3BG
vantageosteopathy.com | 01223 832 808
vantageosteopathy@gmail.com



PLUMBING, HEATING
AND MECHANICAL



ELECTRICAL, FIRE
AND SECURITY



REFRIGERATION AND
AIR CONDITIONING



RENEWABLE ENERGY

Domestic & Commercial
e: info@huttie.com t: 01223 292295
www.huttie.com

1st Shelfords and Stapleford Scouts



WE are looking for new leaders for all of the sections in the local Scout Group (Beavers, Cubs or Scouts). Scouting depends on our volunteers to deliver the programme for our boys and girls and every volunteer makes a real difference.

I am sure you are thinking that “I have got enough going on already”, so I thought I would just share with you my experience of taking on the role as a Scout Leader some years ago when my children were coming through the group. I was persuaded by my wife that I really should do something other than work and to do something which ensured I got out more, contributed more, and in particular did something which involved the children more.

Despite having no real experience in crowd control, limited fire lighting experience and no knowledge of knots, I have to say it has been a hugely positive experience. It became two hours of my week when it was impossible to worry about all of the pressures and stresses of work (in my case clinical medicine). Instead I became absorbed in implausible cooking challenges, civil engineering with anything from paper to poles, and games from the ridiculous to the ingenious. My bookshelf expanded to include useful reference books such as ‘Backyard Ballistics’ and ‘Practical Pyrotechnics’.

More importantly however, it has also been a huge privilege seeing a number of young people grow up and develop. I have obviously experienced this with my own children (and that is invaluable). However, seeing all sorts of young people develop from being incapable to competent, whether that be from struggling to open the door to being able to navigate on a hike has been hugely rewarding.

I think many people would be surprised as to what they can contribute to Scouting, and also how they can benefit from Scouting themselves.

We have 3 sections: Beavers (6 to 8 years), Cubs (8 to 10.5 years) and Scouts (10.5 to 14 years) and we are looking for help in all three sections. Don't worry if you don't have the skills, that was where I started. We can help with training and support.

All the leaders I have worked with over the years have been busy people. Many people are juggling multiple things but those are usually the people who make a difference. So, if you are one of those people, or know one of those people who are just about keeping three balls in the air and would like to try adding a 4th, please get in touch.

Contact: **Charles Crawley** on 07765 965821 or @sandsscouts.org.uk

Explore Faith

St Andrew's Youth

Ages 11 to 14

First Friday in the month, in term time

3.30-5.30pm

Stapleford Vicarage, CB22 5SY

RSVP to Lizzie 07973 721106

Magog Down volunteers

DO you enjoy hands-on work in the open that provides healthy exercise and the opportunity to make a positive contribution to our environment? If so you are welcome to join our work parties on Magog Down for a couple of hours each month.



We are a small friendly band of volunteers who meet at the car park on the first Wednesday afternoon of the month at 2pm, finishing by 4pm. Directed by the rangers Claire and Nick, we carry out a range of activities throughout the year. Typical tasks include raking up meadow cuttings, planting new hedgerows, pruning hedges, controlling invasive weeds, removing unwanted scrub and litter picking. You don't need to be super fit and can work at your own pace. Tools and gloves are provided but you are welcome to use your own. You will need stout footwear and gardening clothes. Tea and biscuits are also provided for a break and chat.

Our next work parties are on 2 October and 6 November, when you are welcome to join us, or just come along to see what it involves.

For further information contact us by email, admin@magogtrust.org.uk.

John O'Boyle

Wild Carrot



Helen Hale

St Andrew's Little Fishes

Birth to Pre-School

Mondays in term time

9.15 to 11am

In the Johnson Hall, Gog Magog Way

Free Play, Crafts, Games, Songs & Stories

Meet new friends over a cup of coffee.

Volunteers welcomed to play, chat and make coffee.

For more information contact Fiona Holliday at

layminister@standrewstapleford.org or 478923



Stapleford Community Warden Service

Assisting older people to live independently at home. Providing daily phone calls (Monday to Friday) and help with things such as:

- making drinks and light meals
- watering plants
- making appointments
- getting small items of shopping
- collecting prescriptions
- wellbeing contact

(a small weekly fee applies)

For further information call the Warden on



07436 102733 or juliet.hawksworth@ageukcap.org.uk

Age UK Cambridgeshire and Peterborough is a charitable incorporated organisation registered



AA

Call me to book lessons
Alistair Gibson
 Tel: 07713 156 737

RAYMENTS GARAGE LIMITED

ESTABLISHED IN 1970

23 ASHEN GREEN, GREAT SHELFORD

MOT, SERVICE AND REPAIRS

EXHAUSTS • TYRES • BATTERIES
 BRAKES • CLUTCHES • SHOCK ABSORBERS
 AIR CONDITIONING SERVICES

TELEPHONE: 01223 843048

EMAIL: john@raymentsgarage.com



Don't Dilly: call Lilley of Sawston

Mobile: 07768 718223

ROTAVATING | TURFING | SEEDING | TREE WORK and PADDOCK, ETC.
 PAVING | LARGE OR SMALL AREAS

FENCING A SPECIALITY

128 Duxford Rd, Whittlesford, Cambridge, CB22 4NH


Wellbeing and relaxation



Reiki With
Sue Pitman
 HELP IS AT HAND

Tel. 01223 843164
www.reikiwithsuepitman.co.uk

Barker Bros
 EST 1843



QUALITY LOCAL PRODUCE

FAMILY BUTCHERS

43, High Street, Great Shelford
 01223 843292
www.barkerbrosbutchers.co.uk



More than just a service



Heating



Plumbing



Renewables



Electrical

All Domestic and Commercial works undertaken

www.shelfordheating.co.uk

Telephone 01223833426 E-Sales@shelfordheating.co.uk

D.L.M. AUTOS

63a Orchard Road, Great Shelford CB22 5AA

MOT - SERVICE - REPAIR

01223 844828

www.dlmautos.co.uk

GATWARD **SONS** & SONS

BUILDING ON EXPERIENCE

CARPENTRY, JOINERY & BUILDING CONTRACTORS

Ashley

 07525 494 478

Chris

 07557 735 247

 contact@gatwardandsons.co.uk

EXTENSIONS CONVERSIONS RENOVATIONS ALTERATIONS

Puzzle Corner

Two-letter sequences 4

Solve the clues to find words containing two-letter sequences

Examples

Russian drink (DK) = voDKa

seal-like mammal (LR) = waLRus

digitalis (flower) (XG) = foXGlove

Group 1

branch (FS)

vassalage (FD)

type of fungus (FB)

inability to hear (FN)

unwanted wood (FC)

suspenseful situation (FH)

Group 2

realm (GD)

riddle (GM)

style of jazz (GT)

portable bridge (GP)

close aerial combat (GF)

important person (slang) (GW)

Group 3

shy

stymie

slogan

guardian

keep back

Russian grandmother

using HW HH HP

HD HK HF

Group 4

gift

may

exhibit

opinion

attorney

type of tuna

using WT WF WP

WC WY WM

Set by Hermes - Answers on page 35

Stapleford Community Primary School



STAPLEFORD Community Primary School had a very successful school year 2023/24, with pupils enjoying a variety of learning experiences. From trips and visits (South Angle Farm, Hunstanton, Fitzwilliam Museum, Burwell House and Grafham residential visits, London visit to Lion King, to name a few!), chicks hatching in school, local events (dance festivals, sporting competitions) to national events (the choir performing at the Royal Albert Hall) – it was a jam-packed year!

As a school, we have always been passionate about the arts and over the past year, we have continued to build and extend our arts offer. This continued drive will continue to support our current Artsmark application which we intend to send this Autumn Term.

One key way in which we have done this is through our curriculum and extended curriculum offer with clubs.

One of the standout events for this was the choir's performance at the Royal Albert Hall. Through the fantastic work of Lucy and Trevor Barlow and support of Rachel, our choir rehearsed week after week in preparation for this event



where they joined other schools from across the country to perform. It was a once-in-a-lifetime opportunity, and all involved experienced a truly memorable day! We would like to extend our thanks to our volunteers for their continued commitment and support to running this choir.

We were also delighted to perform at the Cambridge Corn Exchange with Michael Rosen (poet and writer) and other schools in the local area.

Opportunities with our Trust, Anglian Learning, have also included a dance festival which our Year 3 and 4 pupils participated in.



We also offer the opportunity for pupils to complete the Arts Award with Arts Council, England. Our pupils were hugely successful in this, with the entire Year 2 achieving Arts Award 'Discover' and the entire Year 4 class achieving Arts Award 'Explore'. These successes were shared with parents

in an Arts Award Celebration Assembly. During this assembly, it was a pleasure to reflect on our work with the arts, recognising our ambition to achieve Artsmark, our pilot project 'Small Grains' with Stapleford Granary, and the work that Year 2 and 4 classes have embarked on with the Arts Award.

We continue to be incredibly proud of our pilot project with Stapleford Granary and are hugely thankful to them for the opportunities this has opened. In the past year alone, pupils have been involved in a 'Big Sing', attended the 'discover dinosaur' exhibition, participated in workshops exploring identity and self-portraiture and so much more. Our pilot project is shown in the 'Small Grains' booklet which you may well have seen at Stapleford Granary. Our pupils' artwork was also showcased at the Stapleford Show and we value this community opportunity.

Our school (Nursery to Year 6) is an exciting and inspiring place to learn!

If you would like to visit us, we will be holding an Open Event for prospective pupils in October. In the afternoon of 17 October we will be offering school tours. See our website for details: staplefordprimary.org. **Laura Rawlings, Headteacher**



South Cambs Organic Gardeners



OUR session will begin with tips on choosing and growing apples.

Afterwards, experience the wonderful array of flavours in our English apples: from Sunset to Kidd's Orange Red, from Tydeman's Late Orange to Pineapple Pitmaston, from Court Pendu Plat to Ellison's Orange; reinettes, pippins or russets. Every one's a winner.

We will have a range of apples to try. All welcome. Monday 14 October at 7pm at Cox's Close Community Room, Stapleford. Entry £2

For more information contact **Helen Harwood**, tel 840393, e-mail helen_harwood_uk@yahoo.co.uk

L A Kerridge

Painting and decorating

*15 years-plus
experienced tradesmen
Quality interior and
exterior decoration
Artex ceilings smoothed
Free estimates and quotes.*

Tel 01223 832745
Mobile 07843 850484

HJ Paintin Ltd

INDEPENDENT FAMILY FUNERAL DIRECTORS
MONUMENTAL MASONS

Private Chapels of Rest

Floral Tributes and Printed Orders of Service

Golden Charter Pre-payment plans

Personal Attention Assured at All Times

24-hour Caring Personal Service



43 High Street, Linton, Cambridge CB21 4HS

Tel: 01223 891226

8 Morley's Place, Sawston, Cambridge CB22 3TG

Tel: 01223 830065

TIM PHILLIPS & Co.

Accountants

Established 1991

Independent, specialist service for:
**Small Business • Self Assessment
Personal Taxation**

Free initial consultation - no obligation

EASY, FREE PARKING

Copley Hill Business Park, Cambridge Rd, Babraham
Off A1307 between Wandlebury and Babraham

Tel: 01223 830044 www.tpaccounts.co.uk



Mrs Rosemary Rigge

Grad Dip Phys MCSP Reg. HPC
CHARTERED PHYSIOTHERAPIST

T: 01223 844091

M: 07958 708728

E: physio.rigge@ntlworld.com

TREATMENT ROOMS:

26 Mingle Lane, Stapleford
or home visits

ALL HUNG UP



Specialist | Blinds
Tracks | Poles | Curtains
Supply and Installation

E: paul@allhungup.uk
T: 07920 772 969

www.allhungup.uk

M D COOPER

specialising in
INTERIOR DECORATING
AND GLAZED TILING

Design services available

4 Falkner Road, Sawston
Telephone 01223 832422
Mobile 07860 803938

Stapleford Tree Project



MORE people have now signed up to support the project, by undertaking to plant a tree in their garden, helping plant trees in the village on public land, or watering those newly planted trees. Thank you everyone! We are meeting with Highways soon to discuss where we can put trees near roads, and planting is being planned on the edge of the school field. If there is an area of public land near you that you think would benefit from a tree being planted there, then let us know at sophiberridge@gmail.com.

It's prime planting time now for the next couple of months, so do consider if you can possibly plant a new tree on your own land. We could give you a small whip, or you can source a tree yourself. I notice that in the latest Scotsdales leaflet they are offering £10 off any tree over £50, for the whole of October.

Sounds a bargain to gain shade, sound absorption, wind protection, screening from ugly views, help for wildlife. Visit:

staplefordparishcouncil.gov.uk/stapleford-tree-project/. You may well have seen a leaflet around the village, or will have received one through your letterbox already or in the near future. The lovely Discovery Room at the Granary over the school holidays featured our project, and there was a graceful silver birch made of cardboard 'growing' through the room.



To register your interest, fill in the form on the leaflet or online at forms.gle/zQvJJZC9zanutgCy7. Don't fear you are overcommitting - all 'adopt a tree' means is that you keep an eye on one near you in the village and give it a good regular watering in dry weather for the first two years!

Helen Hale

Financial difficulties?



Are you in need, hardship or distress? Do you live in Stapleford? Then the Feoffees Charity may be able to help you.

For more information contact Rev. Simon Taylor at simontaylorstandrews@gmail.com.

FULLY FITTED FROM £895*

Checkatrade
9.8 out of 10


Trustpilot
★★★★★
7000+ reviews



Tug-of-war with your old garage door? Switch to electric for easy access.

- ✓ FREE 5-year warranty
- 🇬🇧 Manufactured in the UK
- 🔧 Fitted by a local Garolla engineer
- 🏆 The UK's No.1 recommended

*Applies to White Transform doors up to 2.25m wide

 Ask about our **NEW** police-accredited TITAN door, giving you extra peace of mind.

GAROLLA
ELECTRIC GARAGE DOORS

BOOK A FREE SURVEY TODAY
01223 902 156
GAROLLA.CO.UK

FLOOR COVERINGS

Cambridgeshire's largest flooring showroom est. 1996

- ◆
- Luxury Vinyl Tiles (LVT)
- Laminate - Hardwood & Natural
- Over 3500 Carpet samples
- Cushion Vinyl

◆
FREE no obligation quotes.
Fitted by fully employed craftsmen with over **100** years experience.

◆
01223 233233

www.floor-coverings.net

◆
Showroom:
Unit 31-32 Dry Drayton Industries, Scotland Road,
Dry Drayton, Cambridge CB23 8AT
Open: Mon - Sat 9-5



Scan to see our showroom



Christopher
THE LOCKSMITH

ARE YOUR LOCKS BEHAVING BADLY?

We Value Old Fashioned Customer Service
A Local Trusted Family Business Since 1989

- 🔑 Specialist in UPVC & Wooden Doors
- 🚚 No Call Out Charge
- 🔧 No Fix No Fee
- 🛡️ All Work Fully Guaranteed
- 👴 10% Senior Citizen Discount



For More Advice & Help Call Christopher:

07772 111 222

www.christopherthelocksmith.co.uk

Great Shelford Library update



OCTOBER is Black History Month - come and explore our display celebrating Black contributions to British life and literature.

Friends of Great Shelford Library will be holding their **Annual Book Sale** from Monday 7 October to Saturday 12 October, to celebrate **Libraries Week**. The focus this year is on sustainability and the climate. What better way to support our environment than by buying used books and supporting your library in the process? We also have a wide range of books to borrow on climate change, energy and the environment.

To support **Libraries Week**, Helen Harwood will be presenting 'A Little Bit Of Shelford History' on Wednesday 9 October at 2pm. Tickets £5, or £3 for Friends of Great Shelford Library. Please book in library.

Also on during October: -

Story, Rhyme & Duplo Time – Every Tuesday at 10.30am. For children aged 0 to 4 years. Come and enjoy stories and rhymes led by our wonderful volunteers. This is a free drop-in event. Parents/carers please stay with your children.

Engage Talk - A Haven for Farmland Birds. A talk by John Meed on his study of the fields between Granham's Road and Addenbrookes – Wednesday 23 October 2 to 3.30pm. A donation of £2 is appreciated. Please stay for a drink after the talk. Please pre-book in the library or via Cambourne.referral@cambridgeshire.gov.uk.

Fancy Dress Spooky Crafts – Thursday 31 October. 2 to 3.30pm, £2 per child.

Come and create something spooky for Halloween. Suitable for ages 2-10. Please pre-book in the library or via Cambourne.referral@cambridgeshire.gov.uk

Children must be accompanied by an adult during events.

Finally – Great Shelford Library had the largest percentage increase in children's Summer Reading Challenge sign-ups in the county! Thank you for your support.

We hope to see even more of you next year!! Mel Abbiss

Contact details:

Telephone: 0345 045 5225.

Email: Cambourne.referral@cambridgeshire.gov.uk

Web: cambridgeshire.gov.uk

COULSON

Plumbing ✦ Heating ✦ Electrical
01223 423750 services@coulson.co.uk

All aspects of plumbing, heating & electrical works undertaken. From small maintenance tasks to large scale replacement & upgrade works.

Bathroom Refurbishments; Boiler Servicing, Breakdowns & Upgrades; Central Heating Installations; EV Charging Points; Consumer Unit Upgrades; Electrical Installation Condition Reports.

Delivering excellence since 1884



green | weigh

minimal waste shop

60 High Street, Sawston, CB22 3BG

Minimal waste shop aiming to support people in reducing single use plastic & food waste.

Refill liquids & dried foods, storecupboard essentials, gifts & toiletries

Vegan, cruelty free with a wide range of organic & gluten free products.

Contact us via email
hello@greenweighshop.co.uk
Follow us on Facebook/Instagram:
@greenweighshop
Website: www.greenweighshop.co.uk

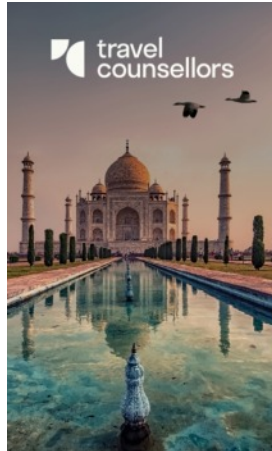


PANTHER
01223
715 715

WIDE RANGE OF VEHICLES AVAILABLE 24/7
INCLUDING 5-8 SEATERS

METERED RATES TO SURROUNDING AREAS

DOWNLOAD OUR BOOKING APP



travel counsellors

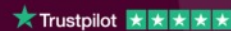
Check-in time?
Whenever you need us.

24/7 support no matter where you are, or what time you need us. At travel counsellors we're all about you. Your needs wants and aspirations for far-flung celebrations - coupled with personal service beyond compare - you can always rely on me.

Cheryl Harradine

TRAVEL COUNSELLOR

01223 842670 / 07742272131
cherylh@travelcounsellors.com
www.travelcounsellors.com/cheryl.harradine



EXPRESSIVE ACRYLICS

Local artist Karen Jinks has a range of fun, creative workshops for both beginners & artists who want to try something new.



Abstract landscapes, flower painting & still life, contemporary drawing & more,
Studio 3, Stapleford Granary, Bury Road, Stapleford, CB22 5BP

www.karenjinksdesign.co.uk/workshops

Shelford Twinning Association



Quiz Night

Friday 18 October, 7.30pm to 10pm
Great Shelford Free Church Hall,
Ashen Green, Great Shelford, CB22 5EY

TEAMS: maximum of 6 people in a team

Individuals/couples also welcome

and will be allocated to a team on the night

COST: £15 per head including supper:

fish/chicken/sausage & chips or vegetarian option

Please book by Wednesday 9 October

DRINKS: fruit juice/wine available - donations welcome

(please don't bring your own drinks

as this would break our agreement with Shelford Free Church)

A RAFFLE will be held on the night

To reserve places, contact richard.patterson@mottmac.com giving team name, names and food choices, or ring 07903 359 699.

Stapleford Horticultural Society

WE welcomed a new speaker to our September meeting. Chris Bamforth Damp gave an informative and entertaining talk on the National Gardens Scheme, which dates back to 1927. Now some 3,500 gardens (with tea and cakes!) are open to visitors every year, attracting around 670,000 visitors, with 80% of the £3m takings being distributed to health and nursing charities. Chris then shared his experiences of opening his own garden for more than a decade.

The October talk will be in the Johnson Hall at 7.30pm on Thursday 10 October, when Nick Dobson's talk is entitled 'Queen Elizabeth: a Life in Flowers', and all are welcome. **John Sherwell**

Karen Jinks

FRANK Jacot, Messenger Production Editor, spoke with Karen Jinks about her background in Art, Stapleford Granary, Open Studios and more.

FJ: Hi Karen, thank you for inviting me to your studio here in Stapleford Granary. Stepping back in time, who inspired you to start your art journey?

KJ: Good question. It's something I've always done, even as a child. I used to win the colouring competitions at school and my mum used to get me to make Christmas cards for the family. So I don't know any different.

FJ: Which kind of art media did you start on and why?

KJ: When I was a kid it was mostly coloured pencils, but actually thinking back, I was very much interested in posters and lettering. Growing up in the 70s, all the packaging was very vibrant. I also loved reading, and I had a lot of picture books and comics. For me, it's this idea of telling stories through pictures, communicating through imagery that fascinates me, even if I wasn't conscious of it at the time. It led me eventually to do graphic design.

FJ: So the painting came later?

KJ: Yes, I used to do a lot of lettering and illustration, but it wasn't until I had my son (who is now 25) that I started to take more interest in painting, so it's been a slow process.

FJ: When did you feel you wanted to kind of make art your full-time career?

KJ: Always. I went to university to study graphic design. I graduated in 1994 and we were one of the last years to do everything in the old way. Photoshop and computer-generated art were coming in just as we were leaving. We were literally taught to cut and paste with knives and glue. I studied at Norwich Art School where we had visiting part time tutors from St Martin's, and collage as an art form was trendy. Think of David Carson, Vaughan Oliver and Dave McKean, we all aspired to be making album



covers and be as successful as they were! But in the back of my head I thought, I really want to learn how to paint rather than illustrate and not rely on collage to create imagery. It never really felt authentic, and I felt like I had more to say.

I always loved looking at other people's artwork and paintings, fine art paintings. I thought their skills were very different and I didn't understand how to do it. I moved to Cambridge a year or two after graduating from Norwich, met my partner, had my son. I had the opportunity then to really think about building a business while at home looking after him and soon learned how to build a website, doing wedding stationery. I still felt like something was missing, but at least I was able to still be creative and work from home while the kids were small.

Over time I started to get involved with other artists and created a network of my own called the Cambridge Creative Network. I started curating exhibitions for our members and built from there. That's when I really worked hard at becoming a painter, but graphic design was still my bread and butter.

FJ: Why did Stapleford Granary appeal to you?

KJ: Well, it kind of found me actually, coming out of lockdown. As my clients disappeared overnight, I had more time and head-space to think and figure out my style of painting. It's been great to spend the last 20 or so years doing design, branding and websites for other businesses and artists. I have also spent years doing workshops through local museums with children, dementia groups and all kinds of different people. But all the time I felt I was always the bridesmaid, never the bride. I wanted to be one of those artists that I was helping, and lockdown was the perfect opportunity to sort it out once and for all. Things started to fall into place. I started to feel like I was doing the kind of paintings I had always wanted to do and I had inadvertently created a process that not only worked for me, it also, as it turns out, works for others. I teach the very same process in my classes.



A friend said to me, well when are you going to start doing your workshops again? I was initially reluctant, but they reminded me that Stapleford Granary was at the end of my road. So I asked if I could hire the Art studio for the day, and it went really well. It also happened that they had

two other studios available, and one of the team messaged to see if I would be interested in one of them. I've been here a year and a half now. It's been amazing.

FJ: Open Studios took place recently. How was that experience for you?

KJ: My studio's always open all year round, if I'm here. I'm either doing my own artwork or teaching and the door is always open, but with Cambridge Open Studios it's a great opportunity to really focus on engaging with art lovers and talk to everyone who walks through the door. It's a different demographic with Open Studios as they choose to come and see you, rather than find you by accident. It's always a nice way to spend a weekend or two. Plus it forces you to tidy up and finish things!



FJ: Is it another way to reach out to the community?

KJ: Yes. Particularly through the workshops, and I always do demos at Open Studios to allow people to have a go. I've realised just how important making art is to people. For some it's about reconnecting with art they did as a kid and never quite got the opportunity to do as an adult because of work and life expectations. We have all got a story to tell, for example pressure from parents who didn't see art as a serious career or art teachers who didn't always encourage you.

Young or old, regardless of how much painting experience they have, the workshops are a special time for my students. As well as all the fun experimentation and techniques they learn, there is the additional bonus of mindfulness that comes through creating something by hand and it can often turn into a bit of a therapy session.

FJ: You mentioned about collages, perhaps you can explain that?

KJ: As I said before, I always felt that using collage was a bit of a cheat, especially when using other found imagery from magazines etc. as source material. However, I've since learned how to make my own collage material (I love a gelli plate), and I've started to accept it as an essential part of my creative process.

There has been a lot of self-acceptance on my part in recent years after thinking that I'm not quite good enough. I've got to a place now where I feel comfortable with myself as an artist, and I love sharing my process and creative journey with others and hopefully give them the confidence and tools to start them on their own!

FJ: Karen, you've evolved, you've taken some risks, and the community are very grateful for you, your presence here, and what you do. Thank you!

Little Shelford Badminton Club

LITTLE Shelford Badminton Club meets every Thursday night at 7.30pm at Little Shelford Memorial Hall for very sociable games of doubles. We have a good group and are always keen to see new faces.

This season started on Thursday 5 September and runs through to 19 December (15 weeks), then after Christmas it runs from Thursday 16 January (after the Little Shelford Pantomime) to 24 April, a further 15 weeks.

New members can come free for a night to make sure it is for you. Thereafter pay £5/session for up to 6 weeks, when we are keen you join us properly and pay the £100 annual subscription - that works out at only £3.33 per night! (Students half price at £50.)

In the past we have run coaching sessions for the juniors and entered teams in the Cambridge league. Not just yet but coming again soon - we hope!

For more information, contact James Newman on 07717 394176, james@jamesnewman.org. **Richard Patterson**

British India



How British rule changed India- and changed the British

A talk by Dr. Sean Lang

Stapleford Jubilee Pavilion

Tuesday 8 October at 7.45pm

Free to members - non-members pay £3 on the door

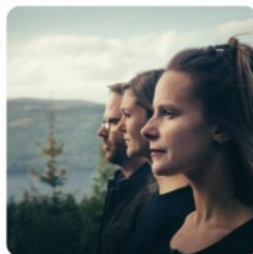


Ensemble Augelletti**Friday 4 October | 7:45pm**

A programme of music by JS Bach, Handel, CPE Bach, Geminiani and Anna Amalia performed by this highly acclaimed BBC New Generation Baroque Ensemble.

**Salt House****Friday 11 October | 7:45pm**

Applauded for their spellbinding mix of ancient and modern songs, Salt House 'a trio of exceptional talent' (Folk Radio UK) are a popular mainstay of the UK folk scene.

**Goldfield Ensemble****Saturday 12 October | 7:45pm**

Music for clarinet and strings: an assortment of characterful, charming British Light Music miniatures from the 1930s, and concluding with Brahms' masterful Clarinet Quintet.

**Tom Ollendorff Quartet****Friday 18 October | 7:45pm**

'Traditional but very classy', Tom Ollendorff is fast becoming one of the best-known young guitarists on the international jazz scene, admired for his distinctive sound and virtuosic technique.

**VRi****Saturday 26 October | 7:45pm**

Long lost songs from Wales, performed with 'the exuberance of a folk band and the elegance of a chamber ensemble' (Songlines) from this multi award-winning, authentic and highly distinctive band.

Great Shelford Friendship Club

THIS is restarting for older men and women, new members and returners.

We meet in St. Mary's Church Community Room from 2.30pm to 4pm on Thursdays (26 September until 19

December). Regulars pay £3 subscription towards refreshments, room hire etc. at the beginning of meetings. Guests come free first time; new members are always welcome.



Our programme (talks, music, films etc.) is supported by St Mary's Church team, offering friendship and interests/activities, seasonal events etc.

Inquiries always invited: **Rosey Feuell**, Licensed Lay Minister, Gt Shelford St Mary - 213305 / roseyleaf@talktalk.net.

Bin collection dates this month

	GREEN	BLUE	BLACK
1 October			✓
8 October	✓	✓	
15 October			✓
22 October	✓	✓	
29 October			✓

Puzzle Corner Answers

Two-letter sequences 4

Group 1: ofFShoot, serFDom, pufFBall, deaFNess, offFCut, cliffHanger

Group 2: kinGDom, eniGMA, raGTime, ganGPlank, doGFight, biGWig

Group 3: bashFul, tHWart, catchPphrase, watchDdog, withHHold, babushKa

Group 4: endoWMent, haWThorn, shoWCCase, vieWPoint, laWYer,

yellWFino

2G3S



DR Bike continues to run its volunteer-run weekly Bike Repair Sessions at the Old Slaughterhouse in Stapleford, 3pm to 5.30pm every Tuesday. Children are welcome to come and learn how to look after their bikes and do simple maintenance and repairs, but please attend with them (for safeguarding reasons). If you are interested in joining our team of volunteers or have any questions on Dr Bike, get in touch on drbikestapleford@gmail.com. You can also book a time slot at that address.

South Cambs Organic Gardeners – for information of upcoming meetings, please contact Helen Harwood, tel 840393, email helen_harwood_uk@yahoo.co.uk. See below.

We haven't got meetings and activities for October, but there are a number of events coming up in November for you to save in your diaries – more information next time:

Film night - it is hoped we can show the film 'Fugolburna' on 4 or 18 November, jointly with the organic gardening group. If you enjoyed 'Pure Clean Water' you will be interested in this film:

Over the past several years concern has continued to grow about the condition of the Cam valley springs, streams and rivers. The development of the Greater Cambridge area over many decades has resulted in increased abstraction of water from the chalk aquifers, causing springs to dry, either totally or intermittently, and streams and rivers to have greatly reduced flows or, in some cases, to dry completely. This has had, of course, a significant impact on the natural environment and biodiversity. This documentary shows how people are working to help improve nature locally. It looks back at the changes that have resulted in the loss of water and biodiversity, and explores the issue of over-abstraction of water from the chalk aquifer and the attempts to compensate for this loss by a pumped water augmentation scheme by the Environment Agency. Interviews with local people and experts provide a better understanding of the issues and the factors that impact on them. The documentary has also provided an opportunity to celebrate in film the beautiful Fulbourn Fen Nature Reserve and other parts of the river catchment area. 'Fugolburna' has been created by local Fulbourn resident David Cottee with filmmaker Nigel Kinnings, who in the film also describe the very effective community group Fulbourn Forum, which is behind several nature-friendly and community-building activities in the village.

If you miss our showing, it is also being shown at Storey's Field in Eddington on 28 November, more information and booking on the Transition Cambridge website.

Transport Evening – this had to be cancelled in June, but has been rescheduled to be on Monday 11 November, 8pm at Cox's Close in Stapleford. More details next time, but put this in your diary if you are interested in electric cars and e-bikes.

Repair Café – if you missed the one in Great Shelford in September, the next one is on Saturday 23 November. Nearer the time you'll be able to book in a repair on the Cambridge Carbon Footprint website. It will be held at St Mary's Community Hall, Church Lane, Sawston CB22 3JR, from 2pm to 5pm.

Book Club - next date is Tuesday 19 November, and the book is 'Techno Feudalism – What Killed Capitalism' by Yanis Varoufakis.

You might not have heard of 'The Great Collaboration', but you are already a potential collaborator! If you take a look at the toolkit on the Great Collaboration website, you will find plenty of examples of steps that we as individuals can take to help preserve and improve our local environment. This is a great place to find new ideas of actions to take and why these are important (as well as be reminded of what you might already know about). If you register with the website, you can report the actions that you have already made, and what further steps you would like to take. This information is pooled anonymously to provide importance guidance for local councils so that they can support what is happening in their area.

As I have said many times, private gardens are the third largest land use sector in England, so how we tend our gardens can potentially have a big impact on carbon emissions and wildlife habitat. The Climate Change Gardening organisation exists to help gardeners create and maintain resilient gardens that can help mitigate climate change. You will find a wealth of resources on their website covering a wide range of subjects, including how to choose the right plants, water harvesting, growing your own fruit and veg, and creating wildlife habitats. They organise talks in conjunction with local gardening groups, and will have a display stand in Cambridge Central Library on 19 October.

Thanks to Peter Woods for the above two items of news.

If you are interested in green matters and the environment at all levels (individual, local, national, international), send an email to mail2G3S@gmail.com to sign up for our quarterly newsletter, or to get more information about our meetings. We are a friendly group and

welcome anyone who wants to come along to one of our events or to find out more about how we can live more sustainably. Also see our Facebook page and our website 2g3s.staplefordvillage.org.uk/. **Helen Hale**

Who remembers the Village Institute?

ABOUT 1908 Dr. William Collier, who inherited his family's farms and cottages, lived and practised in Stapleford. He gave land and paid for the building of a village reading room in front of the school. This was very well used by the village people, and also during the First World War by soldiers billeted in the village and others recovering in the Red Cross hospital in Shelford.



In 1922 Dr. Collier gave a bit more land for an extension including an improved kitchen, which was paid for by gifts of money and loans, which were repaid by regular whist drives and dances. By all accounts the Institute was the social centre of village life, with dances, birthday parties, snooker competitions, WI meetings and concerts. It was equally well-used by soldiers during WW2, but by the 1950's its use had declined.

The Institute was sold to the County Education Authority, who set it up as a maths centre in 1966. There were resources and materials for teachers and children to use and examine new ways of teaching maths, but eventually it became so dilapidated that it was demolished, and the funds used to create a garden in memory of the charismatic headteacher, Harold Holt, who was the head for 21 years from 1959 to 1980 and who oversaw the building of the swimming pool and the Leisure Rooms, besides being very active in the village.



Photographs from David Pepperell's collection. Information from an article published by Barbara Asprey in *Cambridgeshire Life* in 1991.

Full details of the history of the Institute can be found in the village's Millennium History Books 1 and 2. **Keith Dixon**

FOOT PROBLEMS?

Call **07939 227195**

Foot treatment in the comfort of your home

Treatments cover:

- Nail Cutting and other nail conditions
- Corn and callus removal/reduction
- Fungal infections and athletes foot

Celia Kenney

HCPC Registered Podiatrist

The Beechwood Practice | 41 Hills Road
Cambridge CB2 1NT
Call **01223 315541**



PIANO LESSONS

Jacqueline
Cairnduff
CT ABRSM ALCM

All ages welcome.
Also aural training & theory.

2 Sternes Way,
Stapleford CB22 5DA

01223 842912

jcairnduff@hotmail.co.uk

THE GAS SPECIALIST LTD (D Hatter)

Service, installation, and repair of all domestic gas appliances: cookers, fires; specialist in boiler repairs and servicing.

Gas Safe Reg 131405. Est 1994.

01223 844866

Flooring & Furnishing Care Specialist



The Most Thorough Cleaning Ever Seen or It's Free !

- *Carpet Cleaning*
- *Upholstery Cleaning*
- *Fine Rugs Cleaning*
- *Stone Floor Cleaning*
- *Wood Floor Sanding*
- *Vinyl Floor Cleaning*



Call us now on: **01223 081436**

Please quote Stapleford Messenger

www.artofclean.co.uk / info@artofclean.co.uk

Art of Clean
Denny Lodge Business Park
Ely Road, Chittering
Cambridge, CB25 9PH

STEVE the PLUMBER

Steve the Plumber is a friendly, reliable, locally based plumber who would love to help you out! All those jobs you thought weren't worth getting someone out for I would love to do for you.

No job too small and individually priced at great rates.

07803 922517 or www.stevetheplumbersawston.co.uk.

CHIMNEY SWEEP

J. L. WIGHT

Guild of Master
Chimney Sweeps



Certificates issued.
Advice given /
problems solved.

01954 253315

www.camsweep.co.uk
9 Cow Lane, Rampton

Yesteryear

SYLVIA Morris looks at events in the village in the month of October over the years. Punctuation, spelling and capital letters are exactly as printed at the time.

1848

FRENCH LEAVE. On the morning of the 12th inst., a person who had been lodging some time at the Three Horse-Shoes, (and working for a tailor in this village), went off “all on a sudden” without settling with his host, besides which, he broke open a box, and helped himself to about £10 in gold and silver, and made off per rail.

1897

BURGLARY. The rumoured “burglary” at Stapleford Grove proves on enquiry somewhat of a fiasco. The “valuable oil paintings” mentioned as having been stolen from the unoccupied house now famed as the quondam resident of “Dr. Harris” and his “lady” are, the Police state, some half-dozen oleographs worth in all sixpence or less. The house has been said to be haunted; it has probably been haunted by some covetous cottager enamoured of these reasonable works of art.

1904

OBITUARY. With great regret the news of the death of Mr B W J Searle was received in this village. For three years previously to Michaelmas, he had been the tenant of Bury Farm, and during that time had shown himself a kind and considerate employer to his employees. His good nature won for him many friends in the parish and in the offices of school manager, overseer and parish councillor, he took much interest. The greatest sympathy is felt by the parishioners for his sorrowing family. At the funeral on Thursday, the parish was represented by Messrs Hagger, Bull, Finch and Norman.

1916

STAPLEFORD. (*Exemption applications*). Mr. Gray, Stapleford, applied for the exemption of Ernest T Jerret (36) married with one child, engine driver, pumping water for all the stock on the farm and for the house. He also works on the farm. Mr G A Wooten supported the application and stated that Jerret had been passed for garrison duty abroad. He had driven Mr Gray’s motor car for six months in France in connection with the Red Cross and had to return on another man being called up. There was a very long list of patriotism on the part of Mr Gray and his wife which he (Mr Wooten) need not go into. Exemption was granted for six months.

1948

Proposition: "That the Clerk inform the RDC that the pump at the entrance to Bar Lane is out of order and suggest that if it is of no further use, it should be dismantled and sealed up." *(From the Parish Council Minutes)*

1978

Public Meeting – Twinning: "There were 15 members of the public present together with 8 Council members and the Clerk. Of the 3 places visited Villedomer appeared to be the most promising as regards location, size and local activities. It was anticipated that the main function of any twinning would be the encouragement on a family to family basis initially rather than organisations. The government provided some money through the Central Twinning Committee in London to cover some of the initial expenses. Further to a discuss the proposition 'To proceed with twinning arrangements with Villedomer' was put by the Chairman and of the number present 17 voted in favour, the Chairman declaring the motion carried nem. con.". *(From the Parish Council Minutes)*

Celebration of Later Life

Staying Alive – Enriching Later Years

To mark 10 Anniversary of Anna Chaplaincy, a Bible reading Fellowship organisation promoting spiritual care in later life to all, whatever their faith.

Thursday 31 October, St Mary's Community Room, 7pm
Anna Chaplaincy speaker and opportunity to reflect on advancing years.

Wine/juice/nibbles and wisdom!!

Suggested donation of £5/£10 for Anna Chaplaincy
Details from Rosey Feuell, LLM Gt Shelford St Mary
roseyleaf@talktalk.net 213305



Granta Medical Practices

Vaccinations update

As we approach the colder months, there are a number of vaccines that can help protect you against serious illness, including:

RSV vaccine (new for 2024)

The RSV vaccine helps protect against Respiratory Syncytial Virus (RSV) that can make babies and older adults seriously ill. This is offered all year round and is recommended if:

- you are pregnant (from 28 weeks onwards) to help protect your baby after they are born.
- you are aged 75 to 79 (and if you turn 80 on or after 1 September 2024 you're eligible for the RSV vaccine until 31 August 2025. You are not eligible for the RSV vaccine if you turned 80 before 1 September 2024).

Flu vaccine

This vaccine helps protect against flu, which can be a serious or life-threatening illness. It's offered on the NHS every year in autumn or early winter to people at higher risk of getting seriously ill from flu. You can get the vaccine if you are:

- aged 65 or over.
- have certain long-term health conditions.
- are pregnant.
- live in a care home.
- are the main carer for an older or disabled person.
- receive a carer's allowance.
- live with someone who has a weakened immune system.

Shingles vaccine

This vaccine helps protect against shingles and is offered all year round. Shingles is a common condition that causes a painful rash. It can sometimes lead to serious problems such as long-lasting pain, hearing loss or blindness. You're more likely to get shingles, and it is more likely to cause serious problems, as you get older or if you have a severely weakened immune system. The vaccine is recommended for:

- people who turn 65 on or after 1 September.
- people aged 70 to 79.
- people aged 50 and over with a severely weakened immune system.

Pneumococcal (pneumonia) vaccine

This vaccine is offered all year round. It helps protect against serious illnesses like pneumonia and meningitis and is recommended for:

- babies.
- people aged 65 and over.
- children and adults at higher risk of getting seriously ill.

Please speak to any member of our reception team to check if you are eligible for any of the above vaccines and to book into a vaccine clinic.

Sandra East, Head of Patient Services

cpicb.grantapatientsservices@nhs.net

Cambridge Cake Creators

IF you have an interest in baking and want some help or ideas to make your cakes look pretty why not join us!

We are friendly enthusiastic cake decorators who have been meeting monthly for several years now, learning from guest demonstrators, sharing ideas and techniques from each other on how to improve our cake decorating skills.



CCC meets on the 3rd Thursday every month at Stapleford Pavilion from 7.15pm to 9pm at £10 per session. This includes Tea/Coffee & Cake! All levels including beginners' welcome.

This month on 17 October we will be introducing Yvonne (former owner of Yellow Butterfly) who will be giving us some ideas for Autumn Foilage.

For more information, please check local notice boards or contact:

Come and play Mah-Jong

THIS is a class run by Sawston U3A on Monday afternoons between 1.30pm to 4pm.

Mah-Jong is a game for three or four players, a bit like Rummy but using tiles instead of cards. It originated in China and is fun to learn. Beginners are welcome, as are more experienced players.

We meet in the Gordon Woodhouse Room, Ickleton Village Hall. Term starts on 7 October. Annual fees are £25 which covers you attending other classes. Contact Barbara Chew 07780 or google Sawston U3A for details.

Do join us, we are a friendly bunch. **Judy Oswald**



FREE no obligation quotes and advice provided

My Village Handyman Services



- DIY repairs and odd jobs
- Painting & Decorating
- Tiling & Flooring
- Gardening, Landscaping,
- Patios & Decking
- Fencing and sheds
- Kitchen & Bathroom installation
- Brickwork, Dry Walling and Small Builds
- Carpentry and Plumbing
- Window and Gutter cleaning
- Jet wash and Patio cleaning
- Rubbish clearance and Tip runs
- Carpet cleaning and Wood Floor staining
- New doors or locks
- Security and Garden lighting
- **No job is too Small or too Big!**

Your very local handyman!

Contact Steve to arrange a visit or quote

07500 876376 or 01223 881700

Email: steve@myvillagehandyman.com | Web: www.myvillagehandyman.com



Reconnect to your life

Whatever your hearing difficulty, angli-EAR Hearing uses the most up-to-date tests and equipment to find the best solution for you.

Independent audiology experts you can trust

- Hearing Assessments
- Ear Wax Removal
- Hearing Aids
- Tinnitus Solutions



Book your **FREE** ear health check today



Where to find us:
Audiology House (Cambridge)
15 Woollards Lane, Great Shelford, Cambridge CB22 5LZ

BOOK ONLINE www.angliearhearing.co.uk



01223 661399
info@angliearhearing.co.uk

SATURDAY
2ND NOVEMBER
GREAT SHELFORD PARISH
FIREWORKS NIGHT!
AT SHELFORD RUGBY CLUB



Scotsdales



SHELFORD
RUGBY CLUB

Sponsored by:

GREAT
SHELFORD
PARISH COUNCIL



7pm start
doors open 5pm
Food & drink available
Free entry
Parking available at
Scotsdales



DAVID FOX CARPENTRY

*PURPOSE-MADE
JOINERY AND
FITTED FURNITURE*

Unit 4, Granta Terrace,
Stapleford
Cambridge
Tel: (01223) 845143



Specializing In Electrical
Work Within Domestic
Installations

36 Haverhill Road, Stapleford,
Cambridge CB22 5BX

07704493920
enquiries@scpelectrical.co.uk

All types of
carpentry work
undertaken

Phone
01223 842440
for free prompt estimate

STEVE BOND

3 Cherrytree Avenue
Stapleford
Cambridge



01223 832 928
www.Rothwells.biz

Carpet, Stone, Upholstery and Rug Cleaning

Rothwell's has been in business since 1993.

We're an honest local family firm.

Our large truck-mounted machines mean more
cleaning and drying power.

Members of both the NCCA and TACCA.

We will move the furniture for a thorough clean.
100% satisfaction or it's FREE.

*Call Oliver and Max Campbell for expert help
today.*

DAY

CHARTERED
CERTIFIED
ACCOUNTANTS

Do you want more control over your business accounts, or want to organise your personal tax situation more effectively?

We are a friendly team of qualified accountants who can help you reach the potential of your business and give you expert professional accounting and tax advice using the latest technology to work for you in achieving your goals.

We can deal with all matters relating to business tax and accounting including online bookkeeping, VAT

and PAYE matters. Bespoke all inclusive packages are available from £145 plus VAT pcm.

Private clients can be confident that we will deal efficiently with tax return preparation and all aspects of tax planning.

To arrange an informal chat or a meeting please contact us at:

Quern House, Mill Court, Great Shelford, Cambridge, CB22 5LD

T: 01223 506533 F: 01223 363810 E: hello@day-accountants.com W: www.day-accountants.com

Cambridge Flower Club

2024 is our 70th Anniversary!

VISITORS welcome at the Memorial Hall, Mill Lane, Whittlesford on third Thursday evenings.

Refreshments from 6.45pm. Demonstration at 7.15pm.

Membership £40 p.a. Visitors £9 per meeting.

General Information: Freda Orgee 891464; fredaorgee@gmail.com

7 September, Challis Garden, Sawston

Four members of the Cambridge Flower Club committee, Freda Orgee, Gillian Halliwell, Sarah Denham and Sian Jones, presented flower arrangements and then raffled them in aid of the Challis Garden charity (and raised £30). It was a sunny afternoon with a large crowd enjoying various stalls, Sawston Steel Band delighted the visitors and set the afternoon off with a swing. There were competitions in the home-grown vegetable and flower marquee, later sold via auction to the guests.

17 October - Workshop by Alison Purnell - 'Ikebana'

23 November - NAFAS Demonstration by Lee Berrill - 'All things Christmas'. **Sian Jones**



Become an on-call firefighter!

CAMBRIDGESHIRE Fire and Rescue Service is looking to recruit more on-call firefighters to help communities by responding to emergencies.



On-call firefighters are a vital part of your fire and rescue service. They respond to a wide range of incidents, from fighting fires and attending road traffic collisions to rescuing people and animals in need. They also respond to medical emergencies.

In addition to responding to emergency incidents, on-call firefighters support their communities by providing a range of safety advice helping people to keep safe in their homes.

Being an on-call firefighter has many benefits. As well as being paid an annual wage and for the time spent at incidents or training, there are also opportunities to develop first aid skills and heavy good vehicle driving qualifications. Visit cambsfire.gov.uk/oncall.

Stapleford Strollers: Walk 128

Great Chesterford to Linton: a linear walk

Introduction

THIS is a linear walk of about 5 miles which follows part of the Icknield Way route; it makes use of scheduled bus services for getting there and back, so it's one where you can enjoy leaving the car at home.

Getting there

The Stagecoach no.7 bus which comes through Shelford and Stapleford continues on to Saffron Walden once per hour, so hop on one of these and ask for a single to Great Chesterford. The scheduled time for the stop near the Spar is generally 24 minutes past each hour. The Strollers' timing for lunch meant that it was the 9.24am bus which was our target. It was slightly late so bus passes could be used. For 'youngsters', it is currently a £2 single fare. On reaching Great Chesterford, ding the bell when you see the church on the right; the bus then stops diagonally opposite the Crown and Thistle pub.

Route instructions

From the bus stop, cross over the main road and walk down Manor Lane, to the right of the pub. At the end there are gates across the entrance to a farmyard, with a pedestrian access on the left. Follow the footpath round to the left of the large farm building, and on to where the farm track bears left: this goes up to the main B184 road. Bear right at the main road, and then just fifty metres along the pavement you come opposite a wide, grassy track leading up the hill: carefully cross the main road, and then follow this track.

The track leads you between arable fields for about three quarters of a mile to where the trees on the left stop and the track turns a corner to the left. Our route takes the Public Footpath which continues straight ahead, across the arable field - you may end up with muddy boots! It is well marked out and at the far side of the field the footpath dives through the hedge and down onto a narrow lane - the little footbridge in wet weather can be quite slippery.

Turn right up the lane and follow it to a farmyard. After passing through the farm gates, turn right opposite the farm buildings. The footpath follows a natural farm track, with some woods on the right-hand side at first, and then across open land until you get to a copse of trees on the left. Continue around the outside of this copse then, on the far side of it where footpath way markers point in two directions, head down between the copse on your

left and a hedgerow on your right. Follow the footpath that winds across a field and then eventually reaches the end of a thick hedgerow, where you continue downhill with the hedge to your right. At the bottom of the hill, you reach a track: turn right on it. It is a Public Bridleway. Follow it as it goes through an area of woods and alongside a stream, then it comes out into the open and alongside a field for a short stretch. There are some more woods and then the bridleway emerges in front of a dilapidated barn.

From here, the bridleway continues as an obvious farm track. About 500 metres further along from the derelict barn, you'll come to the corner of an open field on your right, with a Public Footpath running diagonally across it – it may not be marked, but should be obvious. Continue diagonally until you come to a long hedgerow in front of you at the field end. You'll see a gap through the thick hedge, which takes you into another field. From here on, the path is better. Continue along between fields, and after half a mile the edge of some woods is reached. The path runs along with the woods on your right. It then dives into some trees, and alongside a fence on your right-hand side, which is in fact the far end of Linton Zoo. Climb over a stile, head straight across the meadow, and then over another stile on the far side. After a short path through some more trees, pass the back of some houses, and then come to the A1307. Turn right along the A1307, noting the bus stop here, called 'Police Houses', for your return journey. Cross the



pedestrian lights, then just down the High Street a short way on your left you'll find the Crown Inn. where the Strollers had lunch.

Getting home

It's best to catch the bus back towards Cambridge from the stop on the south side of the A1307, the stop you passed at the end of the walk: from there, you can catch either the 13, 13A, or X13, all of which will get you to Addenbrooke's Bus Station. From Addenbrooke's, the no.7 bus to Sawston leaves every 20 minutes. Or, for the bus connoisseur, you may be able to hop on the A2B no.31 service (departs Addenbrooke's at 12.25pm, 2.35pm, or 5pm) which for some Shelford and Stapleford residents provides a handy 'drop at your front door' service! **Miranda Fyfe**

Sawston & District Branch



WE held our Band Concert in Challis Gardens last month, and to say it was a resounding success is an understatement. The Newmarket Band were outstanding. Everyone there was either singing along, tapping their feet or in some cases dancing. Even the weather was kind. We will be having another Band Concert next year and once details are finalised, we will let you all know.

Our standard is always present at the front of all of our Remembrance Parades, at the beginning of the Festival of Remembrance when the Parade of Standards take place, or when the RBL is visible at any event. The standard, originally designed by Colonel E C Heath in 1923, the first General Secretary of the RBL, is looked upon as the rallying point of the Branch. It is also a constant reminder to our members of our motto 'Service not Self'. We hope to display our new standard on Remembrance Sunday. We felt that our previous Sawston & Pampisford Branch Standard, did not reflect our absorption of other local branches that have closed in the last few years in surrounding villages – hence a new Sawston & District Branch Standard.

On 15 September 1940, the Luftwaffe launched a massive air assault in the skies over Britain. It was a day of heavy fighting culminating in the Luftwaffe suffering significant casualties. Since then, this date has been celebrated as Battle of Britain Day.

Sawston & District Branch continue to meet on the last Wednesday of each month. The next meeting is on 25 September at 7pm in the Chapelfield Way Community Centre, (just off Link Road), Sawston. The Breakfast Club will be in The Plough, Duxford on 21 September starting at 9.30am. Everybody is invited to come along to both of these events.

John McCarthy, Chairman, Sawston & District Branch

Parish Council Chair's report

ITEMS discussed at the Parish Council meeting included agreement for Christmas lights on a large tree at the Spar shop junction. Other areas for Christmas lighting were discussed but are on hold for the present and awaiting feedback from residents as to whether more lights are welcomed.

Additional security measures are being undertaken by the Parish Council to prevent further traveller encampment on the recreation ground. The recent encampment was removed very speedily, within 24 hours, with relatively little damage and rubbish left behind compared to the last time. Members of the public are thanked for their help in clearing rubbish after the travellers left the site.

Pavilion refurbishment planning is going ahead, with a first phase to improve lighting and acoustics in the large hall as well as installation of a screen and projector.

The application for speed restriction along Haverhill Road and Bury Road is ongoing. The sandpit in the children's play area will be topped up with sand in the near future. A plaque is planned for the David Pepperell community orchard. Work is continuing on recognising important trees in the village and planting new ones.

The future of the slaughterhouse is being considered, but nothing can be done without public consultation. It is expensive to maintain and at present is only used one day a week for the cycle workshop. It would be interesting to know if any other groups would be interested in using it regularly.

The Parish Council is advertising for a new Parish Clerk and responsible Financial Officer.

The next meeting of the Parish Council is 3 October at 7pm at the Pavilion. Members of the public are invited to attend. Applications for new Parish Councillors are also welcomed. **Gillian Pett**

SAVE the Date! Seniors' Tea Party

On Friday, 20 December in Great Shelford Memorial Hall, 2.30pm to 4.30pm.

Same fun time, with eats and quiz and activities. Organised by Rosey Feuall, LLM Gt Shelford St Mary, and others. Please book by 11 December on 213305 or roseyleaf@talktalk.net if you would like to attend or help.

In November I will be recruiting helpers from any group in our villages!
Rosey Feuall

Neighbourhood Plan update

Work on the final version of our Plan is well underway

COMMENTS on the first formal stakeholder consultation back in Spring 2024 (the so-called 'Regulation 14 Consultation') were very gratefully received but, my goodness, there were so many of them! It has been the work of several months to read them, split and sort them according to the part of the Neighbourhood Plan (NP) to which they relate and then respond to them all. One respondent could make comments about, say, 20 different parts of the Plan and all of these need to be noted. Multiply this by the myriad responses we received, and you can start to understand the scale of the mountain we have been climbing.

Work in September and October will focus on updating the NP in light of consultation feedback, and on producing the 'Consultation Statement' and 'Basic Conditions Statement' which must accompany all NPs when they are submitted to the local authority prior to independent examination. The former explains how the community has been consulted and their views taken into account during the development of the NP, whilst only a NP that meets each of the basic conditions can be put to referendum and, if successful, used to assist in the determination of planning applications.

The main basic conditions require that a NP:

- has regard to national policies and advice contained in guidance issued by the Secretary of State
- contributes to the achievement of sustainable development
- is in general conformity with the strategic policies contained in SCDC's Local Plan (2018)
- does not breach and is otherwise compatible with EU obligations, as incorporated into UK law.

This all sounds very dry – and to an extent it is – but it is a legal requirement of the NP process and, frankly, to be at the point where we are dealing with this is something of an achievement. The timeline that we are working to should see the 'submission [i.e. final] version' of the NP being signed off by Stapleford and Great Shelford Parish Councils at their November public meetings, with all documents being submitted to Greater Cambridge Shared Planning shortly thereafter. If all goes well at examination stage, we hope to hold a yes/no referendum amongst those registered to vote in our parishes in Spring 2025. A majority 'yes vote' gives our community a say in shaping the development and growth of our area . Visit greatshelfordparishcouncil.gov.uk/SGSNPlan or write to neighbourhood.plan@staplefordparishcouncil.gov.uk. **Jenny Flynn**

Campaign to Protect Rural England

Cambridgeshire and Peterborough

CPRE (Campaign to Protect Rural England) is one of the longest established and most respected environmental groups in England. Your local CPRE group,



The countryside charity
Cambridgeshire
and Peterborough

Cambridgeshire and Peterborough, was set up over 90 years ago – and we have been speaking up for our countryside ever since. We want to protect it from the threats it faces, and to shape its future for the better.

CPRE campaigns for a beautiful and living countryside. We work to influence how we plan our towns and cities to make them better places to live and work, to ensure the countryside is protected for all to enjoy for now and future generations.

Our work is largely carried out by a small band of volunteers who are committed to protecting our landscapes and rural communities.

Standing up for the countryside

In Cambridgeshire we are lucky to have diverse, evocative and beautiful countryside. However, very little of our countryside has an official designation which would protect it from inappropriate development. With Cambridgeshire being one of the fastest growing parts of England, the countryside on our doorstep is under threat! The dangers include massive and inappropriate development. Flood risk, the impact of climate change and the need to protect our precious farmland in order that we can feed ourselves are just some of the concerns for CPRE regarding development on this scale in and around the Cambridge area.

What you can do

Will you help us in our work? We desperately need more volunteers and members. Joining us for just £5 a month would make a real difference.

For more information contact Jo McGowan at office@cprecambs.org.uk or see our website cprecambs.org.uk.

We're also active on both Twitter (@CPRECambs) and Facebook, so why not join the conversation? **Tracey Hipson**

ACE CULTURAL TOURS

Travel for the
culturally
curious

aceculturaltours.co.uk | 01223 841055

Stapleford Granary, Bury Road, Stapleford, CB22 5BP

ATOL 10204 | ABTOT 5237

The Traveling Companions, August 1861, by John Everett Millais, 1861
© National Gallery, London

The Real Apple Pie



Using white chocolate instead of milk
 Is like velvet pyjamas instead of silk.
 The Master chefs may be the thing
 Doing their versions of everything.
 Replacing milk chocolate with drops of white
 Is innovative, but not quite right.

Or spices added to apple pieces
 In a pie, it never ceases...
 It could be argued; cinnamon and clove
 Make the flavour better, less mauve.
 But the naked fruit just enhances
 Itself, the food just dances.

We all have favourite things to eat
 And when we get them it's a treat.
 A banana has a sauce of toffee
 And *not* of coffee in a banoffee.
 If there's a sauce of espresso coffee
 It's not authentic, not a banoffee.

So Master chefs, just keep things right.
 Keep classic recipes warm and tight.
 Do not innovate on things we know
 It's not classy, it's just for show.
 Food should make your boots just quake,
 So please, no change for change's sake.

Peter Dean

Stapleford Parish Council

staplefordparishcouncil.gov.uk



COUNCILLORS

Gillian Pett (Chair)	gillian.pett@staplefordparishcouncil.gov.uk
Howard Kettel (V Chair)	howard.kettel@staplefordparishcouncil.gov.uk
Mick Davies	mdavies@staplefordparishcouncil.gov.uk
Anna Disley-Stevens	annadstevens@staplefordparishcouncil.gov.uk
Matthew French	mfrench@staplefordparishcouncil.gov.uk
Michael Gatward	michael.gatward@staplefordparishcouncil.gov.uk
Michelle Green	mgreen@staplefordparishcouncil.gov.uk
Barbara Ann Kettel	bkettel@staplefordparishcouncil.gov.uk
James Northmore	jnorthmore@staplefordparishcouncil.gov.uk

CLERK

Belinda Irons 07472 398823 clerk@staplefordparishcouncil.gov.uk
Address for correspondence: 14 Crawley End, Chrishall, Nr Royston,
Herts, SG8 8QL

SOUTH CAMBS DISTRICT COUNCILLORS

Peter Fane, 27 London Road, Great Shelford CB22 5DB
peterfane1@live.co.uk 843861 / 07802 256 861

Will Jackson-Wood
cllr.jackson-wood@scambs.gov.uk 07873 731597

CAMBRIDGESHIRE COUNTY COUNCILLOR

Brian Milnes
brian.milnes@cambridgeshire.gov.uk 07971 886 113

Stapleford Parish Council normally meets publicly on the first Thursday of every month. Please check our website for the latest details



Ken Benson

Heating & Plumbing

Reliable local tradesman

Plumbing • Bathrooms • Wet Rooms • Central Heating

Mob: 07766 544888

Email: kennybenny50@virginmedia.com



Summit Landscapes



ESTABLISHED
OVER
20
YEARS

East Anglia's Most Trusted
Landscaping Company

Garden Rooms
Swimming Pools
Garden Design & Construction
Groundworks
Driveways & Drop Kerbs

www.summitlandscapes.co.uk



01223

929394

PEASGOOD & SKEATES

THE FAMILY FUNERAL SERVICE

*All types of funeral
carried out with the highest standard
of service and care*

45 Moorfield Rd
DUXFORD
01223 833463

48a High Street
SAWSTON
01223 791065

*also in Cambridge, Haverhill
and Saffron Walden*

www.peasgoodandskeates.co.uk

JASON KIRBY

*Professional Painting
& Decorating Ltd*

All Aspects of Internal & External Decorating
Period, Residential & Commercial Properties.

Wallpaper & Mural Install

Kitchen Cabinet & Furniture Re-Sprays.

Floor Sanding & Restoration.

City & Guilds, NVQ Qualified.

Service, Quality & Reliability.



01954 211775

www.jasonkirbyltd.co.uk

The award winning **Zara Indian Cuisine** is the favourite choice for delicious Indian food, offering dine-in and takeaways.

Zara Indian Cuisine offers a sophisticated yet relaxed dining experience.



RESERVATION & ORDER ONLINE

www.zarashelford.com

1 Hinton Way,
Great Shelford,
CB22 5AX

01223 846 668 / 01223 844 244





KITCHENSMITHS

4 STATION ROAD, HISTON, CAMBRIDGE, CB24 9LQ

01223 236 456

info@kitchensmiths.co.uk

www.kitchensmiths.co.uk

