

# Stapleford

*Ne Nuntium Necare!*

# MESSENGER

August 2023

Volume 82 No 8

Price 90p

## Celebrating the Village Weekend

pages 27 to 40



Photos: Louise Guron, Helen Hale



Plus Fun Run report  
page 41

Photo: Fun Run Committee

The Messenger is the Parish magazine for the whole community of Stapleford

**We have a reputation for excellence -  
but don't just take our word for it.**



Extracts from  
Google reviews

*"A first class experience throughout  
the sale of my house."*

*"A really excellent service  
- friendly, efficient, and  
doing the right thing for  
landlords and tenants."*



**If you are looking for a property agent in Stapleford -  
get in touch and discover the Bush difference**

**bush**  
sales

01223 246262  
bushsales.co.uk



01223 508085  
bushlettings.co.uk

**bush**  
lettings

Established. Independent. Passionate.



*Bespoke Curtains  
& Blinds*

**suecrowcurtains.com**



**01223 836498**

Great Shelford  
Solicitors

**DAVIES**  
solicitors advocates mediators

- Family
- Divorce & Separation
- Children
- Civil Disputes
- Wills & Probate
- Estate & Tax Planning
- Powers of Attorney
- Court of Protection

**For a quality and attentive service**  
Please Call: **01223 842211**

[www.daviesolicitors.co.uk](http://www.daviesolicitors.co.uk)  
[law@daviesolicitors.co.uk](mailto:law@daviesolicitors.co.uk)  
30 Woollards Lane, Great Shelford,  
Cambridge CB22 5LZ

*Free and easy parking*

**T&J**  
Tyres & Autocentre

**WE ARE NOW IN A NEW LOCATION.  
CALL US FOR A FREE QUOTE TODAY!**

- New tyres
- Part-worn tyres
- Wheel balancing
- 4-wheel alignment
- Locking wheel nut removal
- Servicing
- Brakes fitted
- Shock absorbers
- Exhaust repairs
- Diagnostics
- Batteries
- Engine carbon cleaning
- Air conditioning
- And more...

**ALL WHILE YOU WAIT**

**Opening hours:**  
Mon-Fri: 09:00-18:00  
Saturday: 10:00-16:00  
Sunday: CLOSED

**01223 845155**

Unit 2, Hillstead Farm, Hinton Way, Great Shelford, Cambridge, CB22 5AN



**WATERLILIES**

SKIN CLINIC • BEAUTY

Call **01223 844700**

Book online at

[www.waterlilies.org.uk](http://www.waterlilies.org.uk)

2d Dolphin Way, Off London Road, Stapleford, CB22 5DW

**THE CAMBRIDGE  
WILL WRITING  
Company**

OFFERING A COMPREHENSIVE  
RANGE OF SERVICES

- Wills
- Lasting Power of Attorneys
- Inheritance Tax Planning
- Trusts

and specialising in home visits, both in  
the evening and at weekends



For a no obligation discussion,  
please contact us on

T: 01223 503688 or 07817 206659

E: [info@cambridgewillwriting.co.uk](mailto:info@cambridgewillwriting.co.uk)

Full price list available on request.

# Who's who at St Andrew's

[www.standrewstapleford.org](http://www.standrewstapleford.org)

## Parish Vicar

Rev Dr Simon Taylor 840256

## Curate

Rev Lucinda Howard 07763 477821

## Churchwarden

Alastair MacGregor  
07855 269844

## Parish Safeguarding Officer

Rob Needle 844227

## Parish Administrator

Gillian Sanders 07752 373176

## Youthworker

Zoe Clayton 894656

## Children's Ministry

Sue Brown 01954 602248

## Director of Music

John Bryden 07803 706847

## PCC secretary

Nicky West 07927 531719

## Treasurer

Chris Bow 841982

## Verger

Clare Kerr 842984

## Captain of bellringers

Tony Smith 843379

## Church flowers

Jackie Nettleton 721366

## Stapleford-Nachingwea Link

Trish Maude 242263

## Mothers' Union

Hilary Street 840548

## Johnson Memorial Hall

Gillian Sanders 07752 373176

## Friends of St Andrew's

Tony Hore 843796

## Gift Aid secretary

Lisa MacGregor 07523 668731

## SERVICES at St ANDREW'S

See the St Andrew's Noticeboard for this month, and the church website at [standrewstapleford.org](http://standrewstapleford.org) for full details. The services include:

9am BCP or CW Communion

10.30am Communion, Services of the Word, Messy Church and Forest Church

## SERVICES AT OTHER CHURCHES

### Our Lady of Lourdes, Sawston (Roman Catholic)

Sundays 8.45am and 11.15am

### Shelford Free Church (Baptist)

Sundays 10.30am

## Christenings and Weddings

Christenings take place during Sunday worship.

For both Christenings and Weddings, contact the parish vicar.

## Stapleford MESSENGER

### Editor

Contact [staplefordmessenger@gmail.com](mailto:staplefordmessenger@gmail.com)

### Advertising

Contact [stapleford.ads@gmail.com](mailto:stapleford.ads@gmail.com)

### Subscriptions/Distribution

Contact 843415 or [vaz@fairshares.co.uk](mailto:vaz@fairshares.co.uk)

The subscription for the Stapleford MESSENGER delivered to your home is £9 per annum (£25 by post): single copies 90p.

# From the Rev Lucinda Howard

ALTHOUGH I am writing in early July for the August edition of the *Messenger*, I can guarantee that what I want to delve into will still be current next month, and the month after that and of interest way into the future. Because this piece is about the topic of **leadership**, a subject that keeps growing in prominence. Any internet search will throw up thousands of entries on leadership, in addition to resources such as TED talks, podcasts and training courses.



A perceived *lack* of leadership or the *right kind* of leadership seems to be always in the news, throughout Brexit and the pandemic for example. Now we ask, where is the firm but fair leadership that might end the current strikes? Are falling standards in public life a direct result of poor moral leadership? Who holds the leaders of private water companies to account? Next year will almost certainly see the United States faced with a leadership choice between two older white men, whilst the ‘strongman’ model of leadership in Russia’s Putin has brought war and destruction to Eastern Europe. Yet female leadership isn’t the promised land that many have thought, and as society gets more tribal and intolerant, how many able people, male or female, reject leadership roles through fear of social media and trial by popular opinion.

Why is leadership so much on my mind you may ask. Well, on Saturday 1 July at Ely Cathedral, I was ordained priest after one year as deacon at St Andrew’s and where I continue to serve as curate. During that service, many inspiring and serious words from the Ordinal – the rite that is used for the ordination of every priest in the Church of England - were said to us, including these, “The church is the body of Christ...to whom God has given particular ministries. Priests are ordained to *lead* God’s people...” So, the issue of leadership has become quite pertinent to me!

An interesting first thought is whether the same leadership skills are required inside and outside the church. Is it wrong for us to adopt some of the best advice from the worlds of business, politics or technology? After all cooperation, innovation and yes, even financial success that is obtained and distributed fairly, are Christian values. The church needs devout and committed people of faith, but it also needs to train its leaders well and at the very least expect a level of competence, industry and enthusiasm for the job.

However, we must also understand that the church is a very different organisation from your average business or service provider, in fact the church isn't an organisation or an institution at all but rather, in the words of the Archbishop of York Stephen Cottrell, "a community of men and women formed by the death and resurrection of Jesus Christ and constantly being transformed by the outpouring of the Holy Spirit." In his excellent book on priesthood, Cottrell lists from the Ordinal key roles of the job and it is two of these, *servant* and *shepherd* that I want to focus on, leadership qualities that might seem more unusual but which I think are the foundation of good leadership, religious *and* secular.

The idea of leader as servant might be seen as counterintuitive in the ambitious culture of secular leadership, yet the church tells its leaders that is one of the most important qualities they need. It's one of the reasons we have our year as a deacon, a year where virtually all the things we are authorised to do, members of our congregation can do already. This is because a deacon's role is primarily that of a servant; serving their church by joining in and enabling what is going on, pointing beyond themselves and putting the needs of others first. And a priest always remains a deacon, the Archbishop of Canterbury is still a deacon! We don't put the role aside as we progress, because ministry IS service, and the role of deacon isn't a steppingstone to greater things but the foundation stone on which everything else is built.

And what about leader as shepherd. This may conjure up familiar images of the church as the metaphorical flock, peacefully grazing whilst the kindly shepherd looks on indulgently! Yet perhaps our distance from the realities of caring for livestock means we don't fully understand the gritty reality of shepherding, which was often a demanding and self-sacrificial job. The Biblical shepherd would live amongst her sheep and be prepared to protect them if a wolf or bear attacked, following the example of Christ himself, the Good Shepherd who demonstrated his goodness and commitment to his flock by laying down his life for them at the cross.

All this responsibility might seem too much to bear. What sane person would not run screaming from the cathedral when they heard these words, "the treasure now entrusted to you is Christ's own flock. It is to him that you will render account for your stewardship of his people." Fortunately, Christian leaders do not need to bear it alone because ultimately it isn't all about us - our successes, failures or influence. In the end it is all about the person we *serve*, Jesus Christ! My desire to be a good leader should never get in the way of me being a good follower of him.

# St Andrew's Noticeboard

6 AUG	9 AM	BCP COMMUNION Genesis 39.1-23; Matthew 5.27-30
	10.30 AM	ALL AGE FOREST CHURCH COMMUNION <i>Joseph the prisoner</i>
13 AUG	9 AM	BCP COMMUNION
	10.30 AM	SUNDAY WORSHIP Genesis 41.15-40; John 6.35, 41-51 <i>Joseph, Governor of Egypt</i>
20 AUG	9 AM	CW COMMUNION Genesis 42.6-36; John 6.51-58
	10.30 AM	ALL AGE MESSY FOREST CHURCH <i>Joseph the ruler</i>
27 AUG	9 AM	BCP COMMUNION Exodus 1.8-2.10; John 6.56-69
	10.30 AM	ALL TOGETHER INDOORS AND BAPTISM Exodus 1.8-2.10 <i>When Joseph is long gone!</i>
3 SEPT	9 AM	BCP COMMUNION
	10.30 AM	CW COMMUNION Romans 12.9-21; Matthew 16.21-28
	10.30 AM	FOREST CHURCH COMMUNION
	6 PM	CHORAL EVENSONG Jonah 3.1-9; Revelation 3.14-22

The church is open every day as a place to come and pray or enjoy a moment of quiet reflection.

## FROM THE REGISTERS

27 JUNE - Funeral of David Pepperell  
27 AUGUST – Baptism of Maeve Harrison Ronge



## Looking for a local venue?

**The Johnson Hall**, next to St Andrew's Church, is an ideal venue for small groups and children's parties. The Hall is **available for hire** for one-off events and regular bookings.

For details please contact **Gillian Sanders**:

**Tel:** 07752 373 176 **Email:** [admin@standrewstapleford.org](mailto:admin@standrewstapleford.org)

## Deadline for the SEPTEMBER Messenger

Please submit copy **NO LATER THAN FRIDAY 11 AUGUST**

By email (Word or similar attachment) to [staplefordmessenger@gmail.com](mailto:staplefordmessenger@gmail.com)

*The Messenger reserves the right to edit material. Please include contact postal address with all letters to the Editor.*

Advertising queries to [stapleford.ads@gmail.com](mailto:stapleford.ads@gmail.com)

Subscription queries to Valerie Powell on 843415 or [vaz@fairshares.co.uk](mailto:vaz@fairshares.co.uk)

The views expressed are those of the contributors and do not necessarily reflect the views of the *Messenger*.

Advertisements are accepted in good faith but customers should satisfy themselves that advertisers are able to supply the services they offer.

# D.L.M. AUTOS

---

63a Orchard Road, Great Shelford CB22 5AA

---

## MOT - SERVICE - REPAIR

---

01223 844828

---

[www.dlmautos.co.uk](http://www.dlmautos.co.uk)

Thinking of  
selling or letting  
your property?



**Our Great Shelford  
team can help!**

Whether it's advice about  
getting your property ready  
to sell, discussing the rental  
market or simply to find out  
what your property is worth,  
give us a call.

We are always happy to  
chat about the local market.

**01223 800860**  
**shelford@rah.co.uk**  
**rah.co.uk**



# Shelford

## Tree Service Ltd

**Professional Tree Surgeons  
covering Cambridgeshire  
and Hertfordshire**

**Fully Qualified & Insured**

**01763 208361**

**07743406569**

**shelfordtreeservice.co.uk**

# GATWARD & SONS LTD

**BUILDING ON EXPERIENCE**  
CARPENTRY, JOINERY & BUILDING CONTRACTORS

 **01223 839490**

 **07557 735247**

 **contact@gatwardandsons.co.uk**

**BASED IN STAPLEFORD**

**EXTENSIONS  
CONVERSIONS  
RENOVATIONS  
ALTERATIONS**



# Warmth



JUNE has been a record-breaking month for excessively high temperatures. Global warming is changing our world, blurring seasons, confusing flora and fauna.

Warmth we are not used to, at times temperatures exceeding those abroad; not without consequences. High temperatures must be taken seriously.

Our planet is in danger requiring serious

attention, positive plans and response. Stifling heat makes concentration, work, even play hard. Patience is tested. Tolerance stretched. We feel tired and drained of energy. However, it is really good to leave raincoats and umbrellas at home and know washing will dry outdoors. There is less scurrying, more calm. Bright light is cheerful, somehow life-enhancing. Smiles and laughter abound and of course the inevitable chatter on the weather. Sun hats, sandals, summery pretty pastels, numbing neons and wildly exotic tropical prints come out appropriate for sea, sand and spectacular scenes. I admit to seeking shade rather than sauna-like intensity, but relish space where sun dapples through tree branches and shimmers on water.

In contrast winter disagrees. Heat is sought. Flaming coal or log fires are joyous. Duvet snuggling is easier than the old days of itchy blankets. Fleeces are efficient and dry quickly. The hot water bottle is still around with colourful covers. Yellows, oranges, reds, gold, warm tones and textures. Bold, bright woollies cheer. Colour helps raise spirits. Stained glass splattering shadowy sensational shapes down pillars are glimpses of glory combined with church choral chants and melody-kindling rapture. Music moves, warms and delights. Musical magic for memory is known. Certain tones or tunes igniting pleasure, heating body and soul.

Another aspect of warmth is belonging. Waves or greetings of acknowledgment create a sense of inclusion, involvement and wellbeing. Smiles lift, the understanding touch, hug, humble hand holding are cherished. People matter, especially friends and family. Generosity of time and kindness, listening, respecting and understanding are precious gifts wrapped in love and support. Life is a long uneven road of learning. We benefit by sharing the wisdom of others and flourish if nurtured. Warmth of the heart and human spirit makes for happiness whatever the outside temperature. **Judith Lee**

# Stapleford-Nachingwea Link

## Sanitary pad project



THE Stapleford – Nachingwea Link is planning a new project, in partnership with a Tanzanian NGO, the Dare Women’s Foundation (see [darewomensfoundation.org](http://darewomensfoundation.org)).

During menstruation, women and girls in Tanzania without menstrual products are often unable to leave their household, meaning they miss school and work opportunities.

Dare Women’s Foundation offers education on health and hygiene, as well as teaching women to make reusable sanitary pads, using locally sourced material. When the products have been made, the Dare NGO will offer support and advice on setting up a viable, sustainable business in Nachingwea in order to sell the pads. This business should provide an income and employment to members of the local community.

We hope that in a later phase a sustainable business could be set up to make and sell home-made soap and goods from recycled products etc.



We are hoping to start phase one of the project within the next month or so. Around forty young women have come forward from the congregation at St Andrew’s Church in Nachingwea, as well as a number from the wider community, requesting to take part in the project. We will keep you updated on the project’s progress.

### Ready and waiting at the Village Weekend



We had many visitors to our stall at the Village Weekend - both new and old all showing great interest in the progress of our various projects.

Thank you to all who so generously support the Nachingwea Link. Your contributions are much appreciated. **Stapleford-Nachingwea Link Committee**

# Little Fishes@ St Andrews



WHAT fun we've had at Little Fishes (formerly known as St Andrew's Toddler Group) this year. Meeting on Monday mornings during school term we are a friendly group for babies and pre-school age children with their parents or carers to socialise, play and learn new skills. It is a lovely way to start the week and a great place for new parents, or carers to meet, and can be a wonderful support network during those early years.

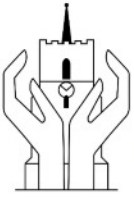
We open our doors on Mondays at 9.15am with a time for free play for the

children and coffee/tea for the adults. When the weather is kind we make good use of our outdoor space. Each week we have a bible story theme, this year we have sailed down the Nile in a basket with baby Moses, watched in awe as Jesus calmed the storm and sighed with relief when Daniel was saved from the lions. We have a simple craft to reflect our theme. Who knew you could do so much with paper plates and cupcake cases? Towards the end of our time together we read some stories, 'Spot' or 'The Hungry Caterpillar' always go down well and we finish with songs and actions: 'Bouncing up and down on the tractor' and 'Sleeping Bunnies' are perennial favourites. A good time is had by all.

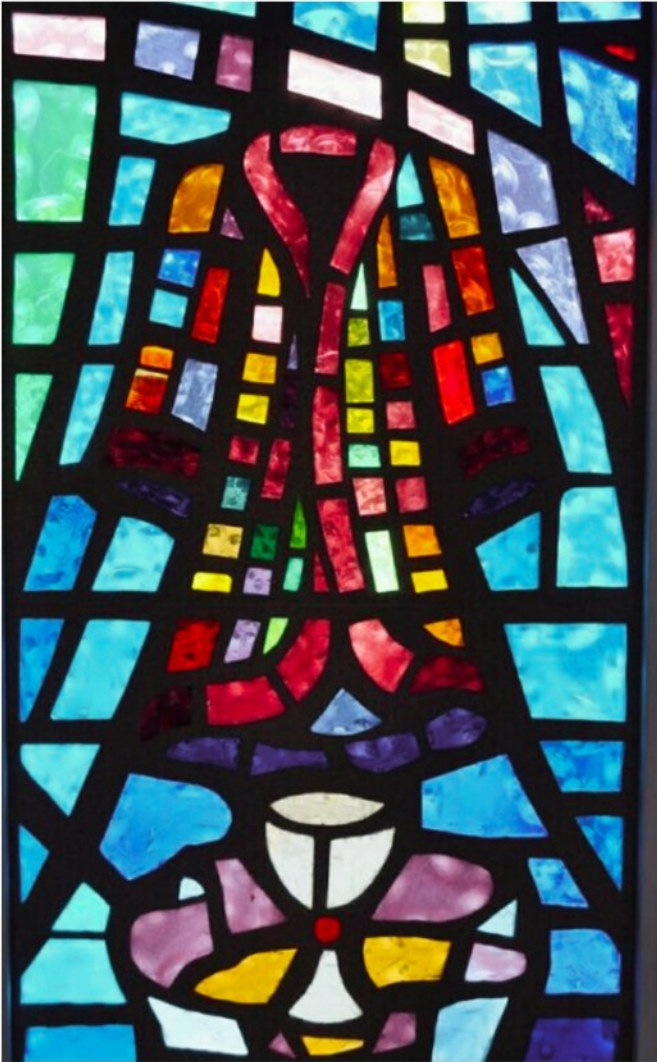
In the spring the Little Fishes team also ran a new five week 'Baby Steps' course for parents/carers and babies under the age of one year. This multi-sensory course uses bubbles, water, games, stories and songs to explore the relationship with the baby, emotions and ideas of faith. Participants enjoyed spending quality time with their babies as well as meeting new friends. We hope to run another course later this year or early next year.



Some of our Little Fishes children will be moving on to nursery or school in September. We have loved having them with us and getting to know them but wish them much joy as they start the next stage in life's exciting



**J  
O  
S  
E  
P  
H**



**Sundays 9 am & 10.30 am  
30 July - 27 August**

journey. We look forward with anticipation to September and getting to know new babies and toddlers and their adults.

Little Fishes restarts on Monday 11 September 9.15am to 11am in the Johnson Hall.

**VOLUNTEERS WANTED:** We are also looking for anyone who would enjoy playing with the children, chatting with carers and making coffee to join our team. Just once a month or more regularly. Safer recruitment safeguarding procedures will be followed.

Email Fiona Holliday at [layminister@standrewstapleford.org](mailto:layminister@standrewstapleford.org) or call 478923 for more information. **Fiona Holliday and Rev Lucinda Howard**

## Joseph

THIS summer series on Joseph covers the five Sundays at St Andrew's, from 30 July to 27 August, and can be heard at both the 9am and the 10.30am services. We hope to hold the 10.30 services on the 6th and 20th outdoors (dependent on the weather).

## Mothers' Union



WE are looking forward to our Mary Sumner Day outing on 9 August, when we are going to visit the Challis Garden again. The event is from 3pm to

5pm.

We greatly enjoyed hosting Milton MU for a cream tea on 13 July in the Johnson Hall – always a pleasure to meet up with old friends again. **Hilary Street**

### Stapleford Community Warden Service

Assisting older people to live independently at home. Providing daily phone calls (Monday to Friday) and help with things such as:

- making drinks and light meals
- making appointments
- collecting prescriptions
- watering plants
- small items of shopping
- wellbeing contact

**Contact: 07436 102733 or [juliet.hawksworth@ageukcap.org.uk](mailto:juliet.hawksworth@ageukcap.org.uk)**



Age UK Cambridgeshire and Peterborough is a charitable incorporated organisation registered with the Charity Commission for England and Wales with registered charity no. 1165856. Registered Office; 3 Victoria Street, Chatteris, PE16 6AP

## FOOT PROBLEMS?

Call **07939 227195**

Foot treatment in the comfort of your home

### Treatments cover:

- Nail Cutting and other nail conditions
- Corn and callus removal/reduction
- Fungal infections and athletes foot

**Celia Kenney**

*HCPC Registered Podiatrist*

The Beechwood Practice | 41 Hills Road  
Cambridge CB2 1NT  
Call **01223 315541**



## PIANO LESSONS

Jacqueline  
Cairnduff  
CT ABRSM ALCM

All ages welcome.  
Also aural training & theory.

2 Sternes Way,  
Stapleford CB22 5DA

**01223 842912**

[jcairnduff@hotmail.co.uk](mailto:jcairnduff@hotmail.co.uk)

## THE GAS SPECIALIST LTD (D Hatter)

Service, installation, and repair of all domestic gas appliances: cookers, fires; specialist in boiler repairs and servicing.

Gas Safe Reg 131405. Est 1994.

**01223 844866**

## Flooring & Furnishing Care Specialist



The Most Thorough Cleaning Ever Seen or It's Free !

- *Carpet Cleaning*
- *Upholstery Cleaning*
- *Fine Rugs Cleaning*
- *Stone Floor Cleaning*
- *Wood Floor Sanding*
- *Vinyl Floor Cleaning*



Call us now on: **01223 081436**

Please quote Stapleford Messenger

[www.artofclean.co.uk](http://www.artofclean.co.uk) / [info@artofclean.co.uk](mailto:info@artofclean.co.uk)

Art of Clean  
Denny Lodge Business Park  
Ely Road, Chittering  
Cambridge, CB25 9PH

# STEVE the PLUMBER

Steve the Plumber is a friendly, reliable, locally based plumber who would love to help you out! All those jobs you thought weren't worth getting someone out for I would love to do for you.

No job too small and individually priced at great rates.

**07803 922517 or [www.stevetheplumbersawston.co.uk](http://www.stevetheplumbersawston.co.uk).**

## CHIMNEY SWEEP

**J. L. WIGHT**

Guild of Master  
Chimney Sweeps



Certificates issued.  
Advice given /  
problems solved.

**01954 253315**

[www.camsweep.co.uk](http://www.camsweep.co.uk)  
9 Cow Lane, Rampton

## Women's Institute



FOLLOWING the usual monthly business section our meeting in May took the form of a social evening where members provided a supper of finger foods. There was also a competition for home-made shortbread and the opportunity to receive the Liz Hodgkins memorial trophy. Liz had been our President for several years and her shortbread recipe had been much appreciated by many, including Graham Wylde, husband of our Secretary and Treasurer, Christine. So Graham had the difficult task of sampling the entries before he declared Eddie Ridgeon to be the first recipient of the award. It was Eddie's first attempt at baking shortbread so this was a proud moment for her.

There was much chatter and socialising as members enjoyed the supper and also, in teams of three, conferred to complete a quiz prepared by our President, Susan Clark. Displayed around the room were pieces of paper on which were drawn the outlines of countries. Identifying these proved to be a challenging activity which led to much lively discussion. The winning team of Heather, Helen and Joyce shared a bowl of summer fruit. Everyone agreed that the evening was a great success.

A very decorative prickly of hedgehogs adorned the the table by the end of our meeting in June!

These had been made under the guidance of our visitors Sally and Victoria Kingman, and were made using old books. It was an extremely enjoyable activity and introduced members to a new craft.



You may have visited our hoopla stall run by members at the Village Show where more than 300 jars filled with sweets and small toys were won. During the afternoon some empty jars were returned to us in anticipation of a repeat performance next year!

The annual meeting of the NFWI (National Federation of Women's Institutes) took place in Cardiff in May. Our Treasurer and Secretary, Christine Wylde, attended this and has provided our members with a full, informative and enthusiastic report of the day's events. In her opening remarks, the chair, Ann Jones, said that in the past year there had been just under 21,000 new WI members. (Here in Stapleford we have also welcomed new members and we are always happy to talk to anyone who thinks they

**OvenPad  
Cleaning Services**

I will professionally and efficiently clean ovens, ranges, Agas, ceramic hobs, extractors, microwaves, and BBQs.

*It's a dirty job, why not give me a call?*

Please contact **Paddy Kelly** on  
Tel: 01638 742703  
Mobile: 0775 263 1343  
Email: info@ovenpad.com  
www.ovenpad.com

*Great Value*

**KASH STORES**

*Local Service*

**A great deal more from your local store!**

- General groceries • Fresh produce • Confectionery  
• In-store bakery • Off-licence • Photocopying  
• Newspapers, magazines & stationery • Lottery  
• Dry Cleaning • Passport photos

**Full Post Office courier facilities**

33-35 Hinton Way, Great Shelford

**Tel: 01223 843307**

**Shop opening times:**

**Mon-Sat:**

7:00am - 6:30pm

**Sunday:**

8:00am - 4:00pm



**Post Office opening:**

Mon-Fri: 9am - 5:30pm

Sat: 9am - 1:00pm

Sun: CLOSED

**Neil's  
Gent's Hair Stylist  
of Stapleford**

Is offering professional gents hairstyling at competitive prices

30 years' experience

4a Bar Lane, Stapleford  
Call 01223 844411 for an appointment



**RUSSELL COOPER  
GARDENING**

*(QUALIFIED HORTICULTURIST EST 1987)*

**ALL ASPECTS OF GARDENING  
WORK CARRIED OUT BY A  
PROFESSIONAL LOCAL  
BUSINESS**

**MONTHLY MANAGEMENT  
OF YOUR GARDEN  
UNDERTAKEN**

**Tel: 01223 830575  
Mobile: 07702 456797**



**O N CHALLIS  
Painter and Decorator**

**Tel: 01223 841646  
Mob: 07939 607653**

*All types of interior and exterior work undertaken.*

*High-class quality workmanship guaranteed.*



**DOCKY BARN CAFÉ**

Copley Hill Business Park  
Cambridge Road  
Babraham, Cambridge  
CB22 3GN

A warm welcome awaits all visitors to the  
Docky Barn café.

Offering a wonderful choice of beverages, homemade cakes, or more substantial fare, butchery, fruit and vegetables, we look forward to seeing you there!



might be interested.) Two speakers from the world of sport addressed the meeting after the business affairs had been concluded. The first was Ebony Rainford-Brent MBE, a World Cup winning cricketer. She had three older brothers and as her mother had always wanted a daughter had a long list of names ready when Ebony was born. As a result Ebony was christened Ebony-Jewel Cora-Lee Camellia Rosamund Rainford Brent which made her passport interesting! Ebony's oldest brother was sadly a victim of knife crime, and first football, and then cricket, became her release. Injury at age 19 threatened to derail her England career but Ebony's determination and supportive family enabled her to continue playing cricket at international level, becoming the first black woman to play for England. Ebony is now a sporting executive, a commentator on radio and a motivational speaker. Her talk concluded with her sharing her keys to success which include courage, resilience and being in the right environment surrounded by good people.

Christine reported that the second speaker, Laura McAllister was another inspirational person who has achieved highly in the world of football. Laura won a total of 24 caps for Wales, captained Cardiff City football team, and recently was appointed to the position of Vice-President on UEFA's Executive Committee. A Welsh academic, Laura is currently co-chair of the Independent Commission on the Constitutional Future of Wales with Dr Rowan Williams and also holds various posts at Cardiff University as a Professor. Her talk finished with advice about never starting a sentence with 'Don't' although Laura said there are some worthwhile exceptions including 'Don't stop learning', 'Don't forget to help others' and 'Don't forget your roots'. Her final words were "know what you need to do to keep sane" and "what's good for her is not for me" - a thoughtful and timely reminder about self-care.

The resolution on clean rivers for people and wildlife about which I have talked in previous articles led to some excellent discussion. Invited experts spoke for and against the resolution. The point was made by Alastair Chisholm, Director of Policy at the Chartered Institution of Water and Environmental Management that focussing on designated bathing sites was detracting from clean rivers as a whole. However whatever can be done to improve the current dire situation is beneficial and the resolution was carried with an 84% majority.

Our own meeting takes place on the fourth Thursday in the month. In August our speaker, Jean Osbourne, will be talking about 'Women in the RAF'. Please check out our website [staplefordwi.weebly.com](http://staplefordwi.weebly.com) or contact Sallie Dixon on 843847 to find out more information. We would love to welcome even more new members! **Joyce Dobson**



*Award winning  
free house & restaurant  
in the heart of the village*

01223 503 402

@hello@threehorseshoes-pub.com

www.threehorseshoes-pub.com

staplefordonline.co.uk



Your community website  
for up to the minute news and  
views from around the village



PLUMBING, HEATING  
AND MECHANICAL



ELECTRICAL, FIRE  
AND SECURITY



REFRIGERATION AND  
AIR CONDITIONING



RENEWABLE ENERGY

Domestic & Commercial  
e: info@huttie.com t: 01223 292295  
www.huttie.com

# Happy 100<sup>th</sup> Kaisu!



KAISU Cornish was born in Finland on 3 August 1923.

She survived the war but lost all her family. She studied English and worked for an accountancy company who helped her to come to England in 1952, the year before the coronation, to improve her spoken English. She lived in Birmingham as an au pair to an elderly lady who was part of the Cadbury family. She met her first husband, married and moved to London. After a divorce she then lived in Spain for a few years, and met her second husband but never had any children. They moved to Highgate north London, where she worked for the BBC Foreign Service. They eventually came to live in Stapleford in 2000 where her husband's family was living.

Kaisu has now been widowed for 10 years.

Unfortunately her eyesight has deteriorated over the years but with support from Camsight and her local friends she has been able to continue to live in Stapleford.

## Magog Singers



THE well-known choral piece, 'Love Divine' with words by Charles Wesley, to a setting by Howard Goodall of Vicar of Dibley fame, introduced the end of term session of the Magog Singers. There followed a varied programme from 16<sup>th</sup> century England and Italy, traditional American and Scottish folk songs, the amusing 'Counting Up My Toes' by David Cullen with a resounding climax of 'Zadok the Priest'.

The choir, conductor, John Clenaghan and accompanist, Brian Watkins received resounding applause in appreciation from the audience who joined them in light refreshments.

Our winter term, starting on 12 September, will start a year of celebration of the choir's 10<sup>th</sup> Anniversary, with the programme of music chosen by the choir from past performances.

If you would like to join the choir, please contact [kathleen.foreman@ntlworld.com](mailto:kathleen.foreman@ntlworld.com). Magog Singers meets on a Tuesday afternoon, 2pm to 4pm in the Pavilion. **Kathleen Foreman**



**AA**

Call me to book lessons  
**Alistair Gibson**  
 Tel: 07713 156 737

# RAYMENTS GARAGE LIMITED

ESTABLISHED IN 1970

23 ASHEN GREEN, GREAT SHELFORD

**MOT, SERVICE AND REPAIRS**

EXHAUSTS • TYRES • BATTERIES  
 BRAKES • CLUTCHES • SHOCK ABSORBERS  
 AIR CONDITIONING SERVICES

**TELEPHONE: 01223 843048**

**EMAIL: john@raymentsgarage.com**



*Don't Dilly: call Lilley of Sawston*

**Mobile: 07768 718223**

ROTAVATING | TURFING | SEEDING | TREE WORK and PADDOCK, ETC.  
 PAVING | LARGE OR SMALL AREAS

**FENCING A SPECIALITY**

**128 Duxford Rd, Whittlesford, Cambridge, CB22 4NH**


Wellbeing and relaxation



Reiki With  
**Sue Pitman**  
 HELP IS AT HAND

Tel. 01223 843164  
[www.reikiwithsuepitman.co.uk](http://www.reikiwithsuepitman.co.uk)

**Barker Bros**  
 EST 1843



**QUALITY LOCAL PRODUCE**

**FAMILY BUTCHERS**

43, High Street, Great Shelford  
 01223 843292  
[www.barkerbrosbutchers.co.uk](http://www.barkerbrosbutchers.co.uk)



*More than just a service*



Heating



Plumbing



VIE MANN



Renewables



Electrical

All Domestic and Commercial works undertaken

[www.shelfordheating.co.uk](http://www.shelfordheating.co.uk)

Telephone 01223833426 E-Sales@shelfordheating.co.uk

## 2G3S



HERE'S a list of our forthcoming events - we look forward to seeing you.

**Nature walk** with John O'Boyle – Bury Farm track, Saturday 19 August, 2pm. Meet at the start of the track near the Granary. The walk is at your own risk, and do wear suitable clothes and footwear. John will point out plants and insects along the path, and is very knowledgeable about all things nature.

**Book Group** – is on Tuesday 22 August at The Three Horseshoes, discussing 'Reimagining Capitalism' by Rebecca Henderson. If you want to join us at Book Club please send an email to 2G3S with 'Book Club' in the title (so we can let you know of any changes and future events).

**Dr Bike** – cycle repair shop every Tuesday from 3pm to 6pm, at the Old Slaughterhouse in Stapleford. We hope to run a 'back to school' session for parents and children on Sunday 3 September, more details will appear on our website or in the September *Messenger*.

**Cycle ride** – there isn't one in August, but the next one will be on Monday 18 September. Start at 10am at Stapleford Pavilion. Booking essential, at [greener@sawston.org](mailto:greener@sawston.org).

**Advance notice** – we are planning a film showing on Sunday 15 October in Whittlesford; and an energy event in the City Centre on Sunday 22 October, at which Yunity, part of Octopus Energy, will talk about community energy generation, and there will be speakers and advice about reducing your home's energy usage. Conversation/discussion evenings will also be held in September, November, January and February on a variety of topics. More information on all these in future issues of the *Messenger*.

**Repairing, reusing and recycling** – as I write this we are organising our Repair Café and SWISH event at Shelford Rugby Club. Hope some of you came along and had items repaired, or picked up a new-to-you summer outfit. Our repairers are very skilled and patient and will often manage to fix broken items, saving you money and landfill space. More generally, when you are recycling items and are not sure which bin to put it in or where to take it, see SCDC's website at [scams.gov.uk/bins](http://scams.gov.uk/bins).

I am trying to avoid single-use plastic as it's Plastic Free July – it's hard! I get a veg box delivered already, and have taken my own boxes (old takeaway boxes) to the butcher and the Thursday fish man in Sawston for meat and fish, and visited Green Weigh and Mary's in Sawston. I am avoiding the big supermarkets as nearly everything is in plastic – but I know

STAPLEFORD  
GRANARY  
MUSIC • ART • CULTURE

# WHAT'S ON THIS SUMMER?

THURSDAY 27 JULY

CRAFTY THURSDAY DROP-IN SESSION (9AM - 12PM)

THURSDAY 3 & FRIDAY 4 AUGUST

DINOSAUR DISCOVERY DAYS: BOOK A PLACE!

THURSDAY 10 AUGUST

CRAFTY THURSDAY DROP-IN SESSION (9AM - 12PM)

THURSDAY 17 & FRIDAY 18 AUGUST

MUSICAL INSTRUMENT DISCOVERY DAYS: BOOK A PLACE!

THURSDAY 24 AUGUST

CRAFTY THURSDAY DROP-IN SESSION (9AM - 12PM)

**DISCOVER FUN-FILLED, CREATIVE ACTIVITIES FOR  
CHILDREN AT THE GRANARY THIS SUMMER!**

FIND OUT MORE [WWW.STAPLEFORDGRANARY.ORG.UK](http://WWW.STAPLEFORDGRANARY.ORG.UK) | 01223 849004  
Stapleford Granary, Bury Road, Cambridge CB22 5BP | registered charity 279567

I'll have a long list of groceries needed in August to stock up! The point is to continue some of these habits into the future, reducing the amount of plastic packaging going in my bin. Supermarkets really need to step up in packaging items differently.

**Books to read** – apart from reading our book group books, you might be interested in these two books. One is all about fungi, Merlin Sheldrake's 'Entangled Life'. It describes how ubiquitous and adaptive this life form is and how vital fungi are to plant growth. You may have heard of the 'Wood Wide Web' – it refers to the network of fungal fibres that connect up the trees in a wood, sharing nutrients, communicating disease risks, and other things. And written in a very easy-to-read style. Did you know a growing fungus can negotiate a maze? The other book I've read recently is 'The Earth Transformed' by Peter Frankopan. He is a historian, and has written books on the Silk Roads, both old and new (the Chinese Belt and Road Initiative). This new book is a world history, showing how climate has affected our history since ancient times, by affecting agriculture, the spread of diseases, and putting pressures on socioeconomic structures such that civilisations can fall if they don't adapt. He likens the environment to a stage that animals and plants, including us, live on – when the stage collapses we all go with it. It is quite appalling to read what we have done to the Earth, and it seems impossible that people will work together to halt carbon emissions and environmental damage quickly enough to avoid horrific temperature rises, with all the knock-on effects on weather and agriculture that will cause. But although it feels like we might as well give up, anything we can do, or push our politicians and businesses to do, will reduce the temperature rises and subsequent environmental changes that our grandchildren will have to endure.

If you are interested in green matters and the environment at all levels (individual, local, national, international), send an email to [greengroupssss@gmail.com](mailto:greengroupssss@gmail.com) to sign up for our quarterly newsletter, or to get more information about our meetings. We are a friendly group and welcome anyone who wants to come along to one of our events or to find out more about how we can live more sustainably. Also see our Facebook page and our website (type 2G3S into Google and you will find us). **Helen Hale**

## We're waiting for your story!

HAVE you a story to tell or an event to publicise? Or perhaps you have an opinion to share on an issue that is important to you. If so, drop us a line on [staplefordmessenger@gmail.com](mailto:staplefordmessenger@gmail.com) - we would love to hear from you.

# Yesteryear

SYLVIA Morris looks at events in the village in August in years gone by. *Punctuation, spelling and capital letters are exactly as printed at the time.*

## 1830

**SALE.** By auction. At the Rose and Crown, Stapleford. Lot 1. A convenient dwelling-house. Three cottages, Barn, Stable, Cart and Cow Lodge, and other Outbuildings, Farm-Yard, Garden, Orchard, Plantation, and a Close of fine old Pasture, called Jacques Close, with all the fruit and timber trees thereon, and situate near the Turnpike and containing 1a, 2r, 6p. Lot 2. A close of fine old pasture and garden ground, called the Fardell's, and adjoining the Turnpike Road and containing 1a, 3r, 6p. Lot 3. A substantial brick and slate Dwelling-House with dining and drawing-room, study, 5 bedrooms, and other conveniences, two Coach-houses, Stables, Dairy and Offices over neat Garden in front and large Pleasure and Kitchen Gardens behind, Arable and Pasture Land, Spinney, Fish Pond, etc., being all adjoining and situated near the Turnpike and containing 9a 0r 14p, more or less. 2a 1r 25p is Freehold of the parish of Sawston and the remainder copyhold. Lot 4. A convenient Dwelling-House containing two lower-rooms and two bedrooms, with convenient closets, neat Garden and palisade fence in front, situate near the Turnpike, in the occupation of Mrs. Robinson.

## 1888

**EMPLOYMENT OF CHILDREN.** Alfred Dawson, farmer, of Stapleford, was summoned for employing two children, under the age of 13, named Frank Smith and Alexander Farnham. Herbert Gosling, farmer of Stapleford, was summoned for a similar offence, in respect of three boys named Richard Elborn, Robert Wilson and Harry Matlock.

## 1892

**DEATH.** From Lockjaw. An inquest was held at the "Three Horse Shoes", Stapleford on the body of Harry Cockerton, aged 18, a farm labourer. He died from tetanus consequent upon the injuries received when he was kicked in the abdomen by a colt.

## 1909

**FREE TRADE MEETING.** An open-air Free Trade meeting was held in Bar Lane on Friday evening. Mr Alf Watson, of Cambridge, presided over an excellent attendance. He referred to the Budget protest meeting which was being held in Cambridge that night and claimed that, as it was a poor man's Budget, not a single working man in the country would be found against it, if



he once understood that from the point of view of revenue, it was the only possible means of raising the necessary funds for imperial requirements, and also for those great and generous Government measures which were now being placed before the country to make life more secure for the people against the evil of unemployment. By the present Budget the knapsack was fitted to the shoulder, and not the shoulder to the knapsack. He declared the noblest patriotism that any man could conceive was to wage unceasing warfare against social wrongs, and the Budget would provide the most effective machinery for that purpose that a responsible minister had ever devised.

Miss Esplin, of the Free Trade Union, delivered a most eloquent and spirited address in defence of our present fiscal system.

She spoke at some length on the question as it affected the homes of the poor, especially from the point of view of the labourer's wife with 12s a week, who had to provide not only the ordinary household necessities, but frequently many other things besides. Did 12s a week leave a margin now? ("No.") How, then, could they hope to provide for their present domestic requirements without an increase of wages? The tariff reformer said if the farmer got more for his corn, wages would rise. Let them compare that promise with their own experience. Had wages increased in consequence of the present high price of corn? ("No.") She said for the mass of the people the question was one of work and wages, with cupboard as the centre. She ridiculed the argument of the protectionist that the foreigner could be made to pay taxes in England, showing that it was contrary to fact, experience, and common sense. Every tax placed upon any article was always paid by the consumer.

Miss Esplin ended a stirring speech by appealing for unswerving fidelity to a system which had stood the test of two generations, and urged them to resist by every means in their power the bringing back once more of a system by which the wealthy prosper upon the misery and degradation of the poor. The meeting was perfectly orderly, and no questions were asked.

### 1916

STAPLEFORD. Mr H Skipper of Stapleford has received official intimation that his youngest son, Corp J A Skipper RE, died in a base hospital on July 27<sup>th</sup> from wounds received in action on July 12<sup>th</sup>. Corp Skipper, who was 23, left Stapleford for Canada over three years ago. When war broke out he returned to enlist. He received wounds from which he died on the anniversary of his enlistment.



## Butchery

High-quality meat with an award-winning friendly service.

## Deli

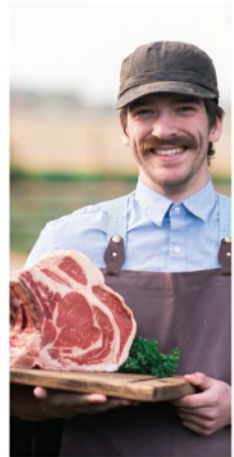
A mouth-watering array of cheese, olives, charcuterie and so much more!



# THE GOG

The Gog Farm Shop is an award-winning farm shop that sources delicious local ingredients, making for the perfect foodie destination.

We look forward to welcoming you soon!



## Grocery

Surprising you with foodie gems from local producers.



## Café

Serving our Great Taste Award winners everyday.



Open 7 days a week

[www.thegog.com](http://www.thegog.com)



# Stapleford History Society

## The Great Plague in Cambridge 1665-1666 - a talk by Professor Emerita Evelyn Lord



THE similarities between the Great Plague and Covid-19 were highlighted by the speaker. There are two types of plague: bubonic, caused by the transfer of a bacterial infection from the fleas on rats, and pneumonic (affecting the lungs caught by inhaling airborne bacteria). The Great

Plague was bubonic. The latest 'plague', Covid-19, was pneumonic. The outcome for many was the same.

In 1658, after an outbreak of bubonic plague in 1646, the four Pest Houses in Cambridge were repaired at a cost of £189-1-9, in case they were needed again. In 1665 the deaths began.

Just as Covid-19 was initially spread by international travellers, the plague was spread by people moving from one place to another. We were at war against the Dutch and the Press Gang seized approximately 80 Cambridge men who were taken to Harwich to be sailors and 400 men to be soldiers. Eventually this forced movement of men had to stop and Plague Orders were introduced to stop public meetings. Even cats, dogs and pigeons were not allowed to be outside. Inns and shops were closed.

The unusually hot weather during 1665-66 combined with an occasional hard frost helped to promote feelings of false optimism about the situation but by the end of August 1666 every Cambridge parish was affected. By October the plague had reached Impington. Although some tried to blame the poor, with their overcrowded and unhygienic houses for their own death toll, it soon became apparent that the plague was no respecter of wealth or status. It even created a new class of poor, as the colleges, which had provided much employment for locals, had closed. Even the harvest was left to rot as there was no-one to gather it in. A Bill of Mortality recorded 920 burials, approximately 12% of the city population.

Not until December 1666 was there a Declaration that normal life could resume and inns and shops could re-open. Those who had survived had cleaner houses as soap had become cheaper but, more importantly, they had built up immunity from contact with the plague in the 1640s. Scientists are now sure that they can isolate a gene – CCR5<sup>Δ32</sup> – which, if you have it, indicates that one of your ancestors must have survived the 14<sup>th</sup> or 17<sup>th</sup> century plague. Perhaps this is known to us as having T cells?! **Jane Steadman**

# COULSON

Plumbing ♦ Heating ♦ Electrical

01223 423750 services@coulson.co.uk

All aspects of plumbing, heating & electrical works undertaken. From small maintenance tasks to large scale replacement & upgrade works.

Bathroom Refurbishments; Boiler Servicing, Breakdowns & Upgrades; Central Heating Installs; EV Charging Points; Consumer Unit Upgrades; Fixed Wire Testing; Rewires;

Smart Home Technologies.



## green | weigh

minimal waste shop

60 High Street, Sawston, CB22 3BG

Minimal waste shop aiming to support people in reducing single use plastic & food waste.

Refill liquids & dried foods, storecupboard essentials, gifts & toiletries

Vegan, cruelty free with a wide range of organic & gluten free products.

Contact us via email  
hello@greenweighshop.co.uk  
Follow us on Facebook/Instagram:  
@greenweighshop  
Website: www.greenweighshop.co.uk



**PANTHER**  
01223  
**715 715**

WIDE RANGE OF VEHICLES AVAILABLE 24/7  
INCLUDING 5-8 SEATERS

METERED RATES TO SURROUNDING AREAS

DOWNLOAD OUR BOOKING APP



Beach holidays, City breaks, Honeymoons, Weddings abroad, Adventure holidays, Ski, Cruise, Tailormade trips, Flight only, Car hire, Airport hotels and parking, and much more . . .

## CHERYL HARRADINE

Travel Counsellor

01 223 842670

cheryl.harradine@travelcounsellors.com

www.travelcounsellors.co.uk/cheryl.harradine



travel counsellors



## Cambridge Floorcare

cleaning & maintenance

We are a family owned and operated local business with over 40 years experience of all types of floor & furnishing cleaning.

We offer a no obligation visit to view the work & will then share our advice for the best possible restoration for your needs.

Family run, Friendly & Trustworthy professionals.

[www.cambridgefloorcare.co.uk](http://www.cambridgefloorcare.co.uk)

01223 520769 or call 07831 094031

- Carpet Cleaning
- Upholstery Cleaning
- Rug Cleaning
- Amtico Cleaning
- Karndean Cleaning
- Tile, Stone & Grout

**10% off when quoting  
'messenger 22'!**

**Bring your flooring & soft  
furnishings back to life!**

# The Big Thank You

IT'S a big thank you from the Stapleford Village Weekend committee to all the:

Cake bakers  
Bar staff  
Car park marshals  
Stall holders  
Washer uppers  
Gardeners  
Craftmakers  
School choir singers  
Piano players  
Circus skillers  
Bike riders  
Cricket players  
Tea makers  
Dog show entrants  
Hymn singers  
Quizzers  
Vegetable growers  
Social media clickers  
Photographers  
Samba players  
Golfers  
Litter pickers  
Grass mowers  
Waiting staff  
Audio visualisers  
Show organisers  
Tennis coaches  
Table and chair lifters  
Artists and painters

# Improve, Don't Move!

Maximise the value of your home.

- SPACE-SAVING - MAXIMISE YOUR GARAGE HEADROOM
- SECURITY-ENABLED AUTO-LOCKING SYSTEM
- CHOICE OF 21 COLOURS TO MATCH YOUR HOME
- REMOVAL AND RECYCLING OF YOUR OLD DOOR
- DEDICATED AFTER-CARE TEAM

**GAROLLA** 01223 902 156

**ROLLER  
SHUTTER  
DOORS**



LINES OPEN 7 DAYS A WEEK

[www.garolla.co.uk](http://www.garolla.co.uk)



BESPOKE ELECTRIC DOORS MANUFACTURED IN THE UK

**FREE  
FITTING**  
PAYMENT ON  
INSTALLATION



PRICED  
EXAMPLE **£895**  
COMPACT • UP TO 2.4M



**GAROLLA ★ PREMIUM**  
Increased Security • Double Insulation  
One-Touch Close

PRICED  
EXAMPLE **£1,990**  
PREMIUM • 3.4M • ANTHRACITE



THE  
CAMBRIDGESHIRE  
CARE HOME

First Care Award  
2019  
TEL: 01223 551200



## Exceptional Residential Nursing & Dementia Care at The Cambridgeshire Care Home

We pride ourselves on our ability to respond to individual needs and preferences. Whether a residents stay with us is just a two week break or a permanent residency everyone living at The Cambridgeshire Care Home will be treated with dignity, compassion and respect.

Call us on

**01223 551200** or email  
[enquiries@cambridgeshirecarehome.co.uk](mailto:enquiries@cambridgeshirecarehome.co.uk)

Barbecue tenders  
Water carriers  
Pimms makers  
Leaflet deliverers  
School band members  
Chip servers  
Setter-uppers  
Clearer-uppers

And, of course, everyone who came along to make it another memorable three days of summer on the Rec.

The bar was certainly popular.

Head barman Bill French said: "The 'Open Arms' welcomed lots of thirsty people from Friday night's quizzers to Sunday night's Pimms (not forgetting the Hymns!)

"Twenty volunteers made the weekend bar operations work very smoothly and we hope that everybody had a glass (plastic returnable) of what they wanted.

"We got through six kegs of beer over the weekend, two more than last year. The hire of a beer cooling unit proved invaluable and meant we could serve beer at the right temperature despite the heat wave."

Plans are already starting to be formed for next summer's Village Weekend, which will be in June 2024, so any feedback will be welcomed.

Please email your thoughts on what went well and what might be improved to the [staplefordweekend@gmail.com](mailto:staplefordweekend@gmail.com) or look out for a survey that will be published soon. **The Stapleford Village Weekend Committee**



*Photo: Louise Guron*



*Photo: Helen Hale*

**More pictures and memories on the following pages**

## A win for the young ones

SUNDAY afternoon saw the Rec host the annual Village Match between Stapleford cricketers of all ages. And, as has often been the case, the younger ones ended up showing the older ones how to do it.

The talent pool was divided roughly equally into two teams, with Gareth Everson captaining one and Ralph Minter the other in a 30-over affair where the bar in the marquee was simultaneously a distraction, a target and an incentive to finish as soon as possible.

Ralph's team batted first and saw openers Aidan Swain and Jeff Wilson both prosper, with the



former depositing the eighth ball of the match over the Pavilion (if anybody finds it can we have it back please?).

Each reached the retirement threshold of 30 but Gareth's team fought back immediately with Josh Creed having the captain caught behind and Dylan Everson bowling fellow 15-year-old Danny Minter.

The middle order retaliated as Bruce Cairnduff posted a not out knock of his own and debutant Ed Robinson almost did as well but the tail was tamed as another young Everson, Rohan, took a wicket, as did his father.

Ralph's team had to be content with a score of 187-5 from its 30 overs - and, after a fine cricketing tea was consumed, a big chunk of those runs was duly knocked off as both openers in Gareth's team - James Badcock and Dave Garman - also hit quick 30s.

No-one could take advantage of such a promising platform however as the next seven bats came and went without troubling the scorers too much, with father and son duo Jon and Jacob Frampton taking two wickets apiece.

It was teenager Seth Bannister who wrapped up an impressive 84-run victory however with a five-wicket burst that included the dismissals of both returning openers in quick succession.

***Condolences from all Stapleford cricketers to the family of David Pepperell. David was our diligent scorer when Stapleford Phoenix came into existence almost a decade ago and he was a keen cricket lover. Jon West***



# Quiz time at the Weekend

THERE are new holders of the Village Weekend Quiz trophy after Thick(ish) Edge narrowly pipped Two's Company in the big Friday night event.

All teams ended up posting impressive scores on a night where participants were invited to identify Custard the Cat, the music of Anthony Newley and the character played by both Sorrell Booke and Burt Reynolds, among other tasks. Indeed, every single question was correctly answered by at least one team.

As well as the trophy the winning team received a box of chocolates.

Big thanks to Chris Cooper for keeping score throughout and providing the technology for the music round.

## Full results

1. Thick(ish) Edge 146
2. Two's Company 137
3. Jackson Four 130
4. Random Allotment Assortment 128
- 5=. After Eights 126
- 5=. Pett's Corner 126
7. Never Gonna Quiz You Up 125
8. Turtle Recall 124
- 9=. Every Dog Has It's Day 117
- 9=. Pump My Flush 117
11. Quizzicals 104
12. The Privileges Committee 98
13. Universally Challenged 96.5

For readers who did not attend, we reproduce Go Hog Wild on page 43 to see how you would have done. **Jon West**



*Aidan Swain holds the cup and Rob Garrett the chocolates. Also pictured (l-r): Jon Frampton, Nusrat Hamid, Simon Lancaster, David Garman, Louise Tonkin and Alastair Mundell*

# Celebrating the V



Photos: Louise Guron

# Village Weekend





Photos: Helen Hale, Christine Hall, Linda Whitebread

# Village Show round up

WELL. What can I say? What a fantastic turn out on the Rec for the Village Show.

Although the number of exhibits was lower than in previous years, particularly in the children’s sections, a huge number of people visited the Show and there were many more people on the Rec enjoying the attractions. Thank you all for coming.

The winners of the silverware are given below; photos on the next two pages.

Well done and thank you to all winners and those who competed.

Thank you to everyone who helped in any way to put the show on. We couldn’t do it without you. If you’d like to get involved with organising this fantastic community event, there are plenty of jobs, small and big, to be undertaken and we would love to hear from you. Please contact me.

Thanks. **Julie Rayment – 07870 215776**

Tucker Gardner Challenge Cup .....	Pat Hughes
Challenge Cup for flowers.....	Seeyreen Varsally
Roy Burman Shield.....	Seeyreen Varsally
Rosalie Bowl.....	Jo Robinson
The Flower Show Centenary Cup.....	Julie Rayment
St Andrew’s Millennium Trophy .....	Louise Guron
Home Produce Cup.....	Sue Rose
Cambridge Building Soc. Cup.....	Surabhi Khanna
Rickett Cup .....	Tony Smith
Mary Ward Cup .....	Sophie Paley
Jessie Salter Cup .....	Seth Malin
The Joan Riley Messenger Cup.....	Laura Townsend
Marion’s Cup.....	Sophie Paley
The Nick Pett Cup.....	Emily Thorpe
The Stapleford Children’s Challenge Cup.....	Sophie Paley
The Stapleford Personal Choice Cup .....	Surabhi Khanna
Stapleford Show Photography Award.....	Keith Taylor
The Joan Sudbury Allotment Cup.....	Mike Trower
	and the <b>BIG</b> one
The Challenge Cup, for most points from all Classes.....	Sue Rose

# Just some of the winners and exhibits



Sumbhi Khanna



Sue Rose



Seeyreen Varsally



Jo Robinson



Sophie Paley



Jools Rayment



Photos: Louise Guron

# STAPLEFORD MESSENGER



Photos: Louise Guron

# Tour de Stapleford rides again

ON a hot sunny day, cyclists of all ages took part in the Tour de Stapleford Family Bike Ride on the Sunday of the Village Weekend.

The route which was fully marshalled by volunteers, covered all the cycle routes between Stapleford, Sawston and Babraham. Most riders covered the full distance of 7 miles, the option was open for smaller legs to complete shorter routes of ½ mile, 2 miles, or 5 miles. Certificates were received by all finishers, and delicious barbecued bacon rolls were also served.

The riders and the marshals were all extremely enthusiastic about how much they had enjoyed the occasion. **Tom Robinson**



Photos: Louise Guron



# Who's the prettiest pooch?



Photos: Louise Guron, Helen Hale

THIS was the second year that a fun dog show had been included in the Weekend. Held on the Saturday afternoon it was not so well supported as last year but those who took part still thoroughly enjoyed the experience.

Some 16 dogs competed over three pedigree classes and four novelty classes. Overall winner of the pedigree classes, which were judged by Selene Bland, a bulldog breeder and judge, was George Young with 4-year-old Benny, a Shetland Sheepdog (left).

Following on there were the four novelty classes including waggiest tail, dog that looks the most like its owner and the dog the judge would like to take home with them. These classes were judged by Nicola, Chris's wife from the Three Horseshoes, who found her overall winner in Marley, a Toy Poodle shown by Zoe Clayton. **Steve Mynott**

# Community Warden delivers a rat-splating time!



Photo: Chris Russell

I WOULD like to thank the organisers of the Stapleford Weekend for their hard work in providing a great show this year. It is always a welcome chance to meet friends, make new friends and splat a rat or two!

The Community Warden Service (AgeUK Cambridge and Peterborough) offered you a rat-splating chance this year and we would like to thank all those who supported us on the day and for all the generous donations we have received since.

For more information about supporting the service, volunteering with us or joining the scheme please contact: Juliet Hawksworth, tel: 07436 102 733, email

wardens@ageukcap.org.uk. **Juliet Hawksworth**

## Stapleford Twinning Association

### Bottles bonanza!



WE had our usual bottle stall in the recreation ground at the Stapleford Village Show during the afternoon of Saturday 24 June. Bottles galore from Babycham and beer to washing up liquid and water were available to be won at

the twinning tombola. A steady flow of punters came to try their luck and to hear about twinning activities.

A big *merci* to our members who donated the bottles and to our supporters who bought tickets.

There is more about our association at [twinning.staplefordvillage.org.uk](http://twinning.staplefordvillage.org.uk). **Tim Jessop**



*Jill Gardner, Mary Cooper and Kathleen Foreman setting up the stall*

# All for run and run for all at the Stapleford School Fun Run



MORE than 160 runners came together at Magog Down for the annual Stapleford Community Primary School Fun Run, raising funds to support the school. Sponsors Bridge Fitness kindly led the warmup before the runners set off to race either 1km, 4km or 8km around the Down. The run saw a huge range of game and enthusiastic participants both young and old.

Callum Mundell and Ellie Mundell winning the male and female 1k respectively, Alex Minter (M) and Ruby Seaborn (F) winning the 4km, and Oliver Seaborn (M) and Sarah Aldridge (F) winning the 8km.



Race goers were encouraged to wear fancy dress, with Camille Sullivan and Elin Irving taking the best fancy dress prize with their impressive Slash costumes.

There was an array of beautiful cakes kindly baked by Year 5 students and parents, offering much needed post-run refreshments.

A total of more than £1,600 was raised from race entries and sponsorship. This will help to fund the continuation of the school swimming pool's maintenance, as well as equipment for a 'Forest School', a great initiative to encourage the children to enjoy and appreciate nature.



With huge thanks to all those who took part and donated and a special thank you to the run's sponsors: Wedd Joinery, Camweavers, Scotsdales, Gymbos, Bridge Fitness, The Three Horseshoes, NY Wines, Shelford & Stapleford Strikers FC and AF Tennis coaching. And finally many thanks to the Magog Trust for kindly allowing the run to take place on Magog Down. **Emma Horton (photos: Fun Run Committee)**

# L A Kerridge

Painting and decorating

*15 years-plus  
experienced tradesmen  
Quality interior and  
exterior decoration  
Artex ceilings smoothed  
Free estimates and quotes.*

**Tel 01223 832745**  
**Mobile 07843 850484**

# HJ Paintin Ltd

**INDEPENDENT FAMILY FUNERAL DIRECTORS  
MONUMENTAL MASONS**

Private Chapels of Rest  
Floral Tributes and Printed Orders of Service  
Golden Charter Pre-payment plans  
Personal Attention Assured at All Times  
24-hour Caring Personal Service



43 High Street, Linton, Cambridge CB21 4HS

**Tel: 01223 891226**

8 Morley's Place, Sawston, Cambridge CB22 3TG

**Tel: 01223 830065**

# TIM PHILLIPS & Co.

## Accountants

*Established 1991*

Independent, specialist service for:  
**Small Business • Self Assessment  
Personal Taxation**

Free initial consultation - no obligation

**EASY, FREE PARKING**

Copley Hill Business Park, Cambridge Rd, Babraham  
*Off A1307 between Wandlebury and Babraham*

**Tel: 01223 830044** [www.tpaccounts.co.uk](http://www.tpaccounts.co.uk)



## Mrs Rosemary Rigge

Grad Dip Phys MCSP Reg. HPC  
CHARTERED PHYSIOTHERAPIST

**T:** 01223 844091

**M:** 07958 708728

**E:** [physio.rigge@ntlworld.com](mailto:physio.rigge@ntlworld.com)

**TREATMENT ROOMS:**

26 Mingle Lane, Stapleford  
*or home visits*

## ALL HUNG UP



Specialist | Blinds  
Tracks | Poles | Curtains  
**Supply and Installation**

E: [paul@allhungup.uk](mailto:paul@allhungup.uk)  
T: 07920 772 969

[www.allhungup.uk](http://www.allhungup.uk)

# M D COOPER

specialising in  
INTERIOR DECORATING  
AND GLAZED TILING

***Design services available***

4 Falkner Road, Sawston  
Telephone 01223 832422  
Mobile 07860 803938

# Go Hog Wild

1. Pigs in Space, featuring the exploits of Captain Link Hogthrob and Dr Julius Strangepork among others, is a recurring sketch from which long-running TV programme?
2. In Animal Farm, what were the names of the two pigs who led the rebellion, for a point. For another, what was the name of the pig in charge of propaganda?
3. In which video game might you encounter pigs, piglins and/or hoglins? A zombified hoglin is known as a zoglin, if that helps.
4. Which of the following is NOT a real creature: pigeye shark, pig-mouth tree frog, pignout pipefish or the banded piglet squid?
5. Babe is a 1995 movie adaptation of a 1983 book by Dick King-Smith. What, though, was the title of the book, for a point? For another, what was the surname of the farmer and his wife?
6. Dennis the Menace has a pet dog called Gnasher but what was the name of his pet pig?
7. Pigling Bland, a polite porker who helps prevent a fellow pig from being turned into bacon, is a creation of which writer?
8. The Empress of Blandings was an enormous prize winning Berkshire sow who was the subject of kidnapping plots in the Blandings Castle series of novels by which English writer?
9. Which smart-dressing but corrupt public servant was played by Sorrell Booke in the 1970s TV series and Burt Reynolds in the 2005 film?
10. And finally, who did Boris Johnson claim in a 2021 speech was the embodiment of “the free trade in which Margaret Thatcher believed”, because thousands of small American children are now saying ‘tomarto’ instead of ‘tomayto’.



Quiz master Jon West Going Hog Wild

Answers on page 51

# Stapleford Strollers: Walk 117

## Fields and Lanes: a walk from Thaxted

### To get to start of walk

DRIVE to Saffron Walden. Turn left at the traffic lights and then keep ahead at the mini-roundabout, on the B184. Turn right at the next set of traffic lights and leave Saffron Walden, heading for Thaxted, still on the B184. In Thaxted itself, turn left immediately before The Swan Hotel. Don't use the pub car park but carry on to the free town car park (Margaret Street). CM6 2QN.

### Distance of walk

4.1 miles. The longer version (see below) is just over 4.6 miles. Best done in summer, as a couple of cropped fields have to be crossed.

### OS Map

OS Explorer map 195. Use [maps.the-hug.net](http://maps.the-hug.net) for a free map extract, or use the route map provided.

### Extra Information

Thaxted means 'the place where thatching materials are got', in Old English. It was the centre of the country's cutlery industry in the Middle Ages, somewhat oddly, as none of the raw materials were found locally. The so-called 15C Guildhall in Thaxted was built using money provided by local cutlers. It is really a Moot Hall (Meeting Hall) rather than a Guildhall, because the local cutlers never had a guild of their own. Thaxted (Music) Festival is held every year, in June/July, and was started by Gustav Holst, who often stayed in the town during summer walking holidays.

### Route of the walk

Cross the main road from The Swan car park and walk along the narrow path opposite that emerges on to Watling Lane. Turn right and walk along the road, going beyond the last houses. Pass a path leading left across a footbridge and carry on ahead.

The path bends left and follows the right-hand side of a large cropped field. Ignore the first two paths leading off to the right but take the third, crossing another cropped field and heading towards a wood. Shortly into the wood, go left at the path junction and walk along the left-hand side of a new field. The path eventually crosses the field and goes through another wood, emerging on to a wider track next to Woodhams Farm.

Turn left along the track, with the farm buildings to the right and a large field to the left. Ignore a path to the left and then one to the right, but take

the second path on the left. This crosses a field and then a (somewhat grass-covered) bridge. The route continues along the right-hand side of the next field and eventually meets a road. Cross over, with care, and walk left along the roadside for a short distance, taking the first footpath on the right.

This path leads ahead, with cropped land to the left, and eventually emerges on to a minor lane by a house called Richmond's in the Wood. Turn left and walk along the lane, which eventually reaches another lane. Turn left and carry on along this new lane towards the hamlet of Cutlers Green. The longer version of the walk goes right at the Footpath sign. See details on route map.

When the main road is reached, cross over and walk along the path beyond, which heads back towards Thaxted. There is a great view of the parish church spire and the windmill. Ignore a path to the left at the end of the first field and carry on ahead, going downhill towards the River Chelmer. Cross the river (more of a stream) and walk straight ahead.

The path now turns sharp left and, shortly afterwards, sharp right. It then divides. Take the left-hand fork and walk up quite a steep slope. At the top of the slope, the path meets up with Watling Lane. Turn right and walk round the corner to where Watling Lane meets the main road. The Swan is opposite. Cross the road and return to the starting point. **David Barnes**

*The Stapleford Strollers do not accept responsibility for any accident or mishap that may happen to any person who follows this route.*



# Shelford Support Group (SSG)



THE organisers of SSG, the Community Transport service for the Shelfords and Stapleford, regret to announce that we will not be organising any journeys for the four weeks from Monday 31 July to Tuesday 29 August.

In June we undertook 79 passenger journeys and July was equally busy, but SSG is run entirely by volunteers and unfortunately this summer we simply don't have enough coordinators or drivers available to maintain our usual commitments indefinitely.

If we are unable to recruit some more volunteers the whole future of SSG is uncertain. So please, if anyone would like to find out more about SSG and might have some spare time to coordinate (matching journey requests to driver availability) or drive (predominantly for health related appointments) then we would be delighted to hear from you! **Gillian Northmore**, shelfordsupport@googlemail.com, or 504542

## Shelford Guides

TWENTY girls from Shelford and Trumpington Guides were very glad of the hot weekend at the end of June when the overnight temperature didn't drop below 18°C. This was because they slept outside in shelters they'd constructed from cardboard boxes to raise money for Jimmy's Night Shelter in Cambridge. After building fires for hot dogs and s'mores, everyone got at least some sleep. Nobody noticed the visit from a fox during the night which left us a couple of 'presents'! So far, the Guides have raised an amazing £1,100.



### Can you help?

Shelford Guides needs a new leader to be able to continue to meet in September. There are plenty of helpers, but someone needs to take the helm. If you'd like to find out more about what's involved, please contact me at shelfordgirlguides@gmail.com. **Lisa MacGregor**



# Library News

THE popular **Summer Reading Challenge** continues to run through August. Please remember to keep coming into the library to tell us about the books you have read and to collect your stickers. The library will be hosting events to keep children entertained through the long summer holidays.

**DINOSAUR EVENT** - Wednesday 2 August, 2 to 3.30pm, £2 per child.

Dino puzzles, games and stories, plus meet a T-Rex.

All ages but most suitable for 4+

**BUZZY BEE EVENT** - Wednesday 9 August, 2 to 3pm, £2 per child

An informative and entertaining demonstration of bee-keeping plus bee themed crafts.

Suitable for ages 5+

**READY STEADY MAGIC** - Wednesday 16 August, 2 to 3.15pm, £5 per child

Come and be amazed by our magician

Suitable for ages 3-10

**CRAFT EVENT** - Wednesday 24 August, 2 to 3.30pm, £2 per child

Create amazing junk modelling. Take your creations home.

Suitable for ages 3-10

**LEGO and DUPLO EVENT** - Wednesday 30 August, 2 to 3.30pm, £2 per child

Build your own Lego and Duplo creations.

Suitable for ages 2-10

For all children's events please pre-book in the library or via

[Cambourne.referral@cambridgeshire.gov.uk](mailto:Cambourne.referral@cambridgeshire.gov.uk)

Children must be accompanied by an adult during events.

Our regular library activities will resume in September

**Finally** - Don't forget, if you are travelling on holiday you can pack a mobile device with library eBooks, eAudiobooks and eComics to keep your luggage light. **Mel Abbiss**

**Contact details:**

Telephone: 0345 045 5225.

Email: [Cambourne.referral@cambridgeshire.gov.uk](mailto:Cambourne.referral@cambridgeshire.gov.uk)

Web: [cambridgeshire.gov.uk](http://cambridgeshire.gov.uk)



FREE no obligation quotes and advice provided

# My Village Handyman Services



- DIY repairs and odd jobs
- Painting & Decorating
- Tiling & Flooring
- Gardening, Landscaping,
- Patios & Decking
- Fencing and sheds
- Kitchen & Bathroom installation
- Brickwork, Dry Walling and Small Builds
- Carpentry and Plumbing
- Window and Gutter cleaning
- Jet wash and Patio cleaning
- Rubbish clearance and Tip runs
- Carpet cleaning and Wood Floor staining
- New doors or locks
- Security and Garden lighting
- **No job is too Small or too Big!**

**Your very local handyman!**

Contact Steve to arrange a visit or quote

**07500 876376 or 01223 881700**

Email: [steve@myvillagehandyman.com](mailto:steve@myvillagehandyman.com) | Web: [www.myvillagehandyman.com](http://www.myvillagehandyman.com)



## Reconnect to your life

Whatever your hearing difficulty, angli-EAR Hearing uses the most up-to-date tests and equipment to find the best solution for you.

Independent audiology experts you can trust

- Hearing Assessments
- Ear Wax Removal
- Hearing Aids
- Tinnitus Solutions



Book your **FREE** ear health check today

**Where to find us:**  
Audiology House (Cambridge)  
15 Woollards Lane, Great Shelford, Cambridge CB22 5LZ

**BOOK ONLINE** [www.angliearhearing.co.uk](http://www.angliearhearing.co.uk)



**01223 661399**  
[info@angliearhearing.co.uk](mailto:info@angliearhearing.co.uk)

# Puzzle corner

## Three-letter sequences (3)

Solve the clues to find words containing three-letter sequences

### *Examples*

hatred (ENM) = ENMity

young cow (EIF) = hEIFer

medieval chemistry (EMY) = alchEMY

### **Group 1**

story (ECD)

hairstyle (EEH)

cricket fielder (ETK)

temperature scale (EIT)

alloy of tin and lead (EWT)

where grapes are grown (EYA)

### **Group 2**

per cent (EDT)

cow patty (EFB)

region of Italy (EDM)

German white wine (EBF)

playful musical piece (ERZ)

Scamander or Gingrich (EWT)

### **Group 3**

listen in

earth science

type of melon

ghostly double

part of horse's leg

Canadian island province

*using EWF ELG EOL*

*ESD EYD ETL*

### **Group 4**

detective

lonicera (plant)

Moscow citadel

spirit of the age

newly-marrieds' holiday

hit for Bee Gees and Steps

*using EYS EDY EYM*

*EUT EIS EML*

*Set by Hermes – Answers on page 51*

# Granta Medical Practices

## Flu Clinics



INFLUENZA (flu) vaccines protect against the influenza viruses. Most flu vaccines are given with a needle in the arm but there is also a nasal spray flu vaccine.

Flu vaccination is important because, whilst flu is unpleasant for most people, it can be dangerous and even life-threatening to others, particularly those with certain health conditions. The best time to have your flu vaccine is early autumn before flu starts spreading. However, you can get your vaccine later if necessary.

### **We are holding our flu clinics on the following dates:**

- Saturday 23 September – Linton Health Centre, CB21 4JS
- Saturday 23 September – Sawston Medical Practice, CB22 3HU
- Sunday 24 September – Royston Health Centre, SG8 7BS
- Saturday 30 September – Shelford Health Centre, CB22 5FY
- Saturday 7 October – Sawston Medical Practice, CB22 3HU
- Sunday 8 October - Royston Health Centre, SG8 7BS
- Saturday 14 October – Barley Surgery, SG8 8HY
- Saturday 14 October - Linton Health Centre, CB21 4JS
- Saturday 21 October - Shelford Health Centre, CB22 5FY
- Saturday 28 October - Linton Health Centre, CB21 4JS
- Saturday 28 October - Barley Surgery, SG8 8HY

All clinics start at 8.30am and finish at 4.15pm.

### **Groups eligible for a free NHS flu vaccine from 1 September are:**

- Those aged 65 years and over
- Those aged 6 months to under 65 years in clinical risk groups:
- Chronic respiratory disease
- Ischaemic heart disease and vascular disease
- Chronic kidney disease
- Chronic liver disease
- Chronic neurological disease
- Diabetes and adrenal insufficiency
- Immunosuppression and those who are in close contact with an immunosuppressed person
- Asplenia or dysfunction of the spleen
- Pregnant women

- Morbid obesity, BMI 40+
- Carers in receipt of a carer's allowance, or those who are the main carer of an elderly or disabled person
- Care home residents
- Pregnant women
- Children aged 2 or 3 years old, specifically at 31 August

Primary school children will be vaccinated in school and will only be eligible to have their vaccinations through us if they have an underlying health condition mentioned above.

Please note that the over 50s with no underlying conditions are no longer eligible for a free NHS flu vaccine. However, private flu vaccinations will be widely available through high street pharmacies, etc.

Whilst you are having your jab don't forget to ask about your eligibility for other vaccinations such as shingles, pneumonia or whooping cough.

Eligible patients will shortly receive a text with a link to book a flu jab, or you can call us on 0300 234 5555. Clinics will be available to book into from August.

If you have any queries please do not hesitate to contact us.

**Sandra East**, Head of Patient Services, [cpicb.grantapatientervices@nhs.net](mailto:cpicb.grantapatientervices@nhs.net)

## Puzzle corner - answers

**Group 1:** anECDote, bEEHive, wickETKeeper, FahrenhEIT, pEWTer, vinEYArD

**Group 2:** hundrEDTh, beEFBurger, PIEDMont, liEBFraumilch, schERZo, NEWT

**Group 3:** eavESDrop, gEOLOGY, honEYDew, doppELGanger, fETLock, NEWFoundland

**Group 4:** slEUTH, honEYSuckle, KrEMLin, zeitgEISt, honEYMoon, TragEDY

## Go Hog Wild - answers

- |                                     |                   |
|-------------------------------------|-------------------|
| 1. The Muppet Show                  | 6. Rasher         |
| 2. Snowball and Napoleon. Squealer. | 7. Beatrix Potter |
| 3. Minecraft                        | 8. PG Wodehouse   |
| 4. Pig-mouth tree frog              | 9. Boss Hogg      |
| 5. The Sheep-Pig. Hogget.           | 10. Peppa Pig     |

# SSYI



WE are delighted to share with you an exciting update on our work including our recent youth residential trip. The trip was organized with the aim of providing our young people with a unique and memorable experience in nature, fostering personal growth, teamwork, and adventure.

From 30 May to 1 June, a group of five young people from our Tuesday youth group embarked on a journey to Brenscombe outdoor centre, located in the heart of Dorset. This beautiful facility, nestled amidst picturesque landscapes, offered the perfect setting for our youth to immerse themselves in outdoor activities, bond with peers, and create lasting memories. During their stay, the young people engaged in a wide range of exhilarating and educational activities, including:

**Team-Building Challenges:** The group participated in a variety of team-building exercises designed to promote communication, cooperation, and problem-solving skills. These included thinking of, planning for, preparing and making a meal for the whole team. The winning meal idea was battered chicken followed by apple pie and custard and it was delicious!



**Outdoor Adventures:** We had a full day of outdoor activities consisting of archery, rifle shooting, building a giant catapult and using the High Ropes adventure course. Not only did these activities encourage team building they also helped the young people foster a sense of resilience and self-confidence with several of them trying the highest ropes course despite their fear of heights.

**Night-time Activities:** our evenings were filled with engaging entertainment, including Uno and Nerf wars as well as building a campfire, toasting marshmallows and storytelling. These activities provided a platform for our youth to bond, share stories, and develop new friendships.

All young people displayed remarkable enthusiasm and resilience throughout the trip. They challenged themselves, conquered fears, and grew both individually and as a group.

We are also excited to announce that Tilly has increased her hours with us, and we have a new full time Youth Worker, Kay. Due to this increase in staff capacity, we have a renewed focus on detached community work

meaning you will be seeing a lot of Kay and Tilly around the villages. They will actively connect with and reach out to our young people in their preferred environments, such as parks, recreational areas, and community spaces. This approach fosters meaningful connections, builds trust, and allows us to better understand the needs and aspirations of our young people. We are confident in creating an inclusive and supportive environment where our young people can thrive. Please do say hello to the girls if you see them out and about!

We have also been able to restart the Girls Group in Great Shelford on a Wednesday and have plans to open a new group in Duxford from September, alongside restarting our younger open access sessions in Sawston. We have also been able to increase our targeted provision work in school giving our young people even more of an opportunity to receive guidance and support.



Additionally, it is important to acknowledge and express our gratitude to our trustees, sponsors, parents, carers, guardians, staff and young people for their support and encouragement which is invaluable in fostering the development and empowerment of our villages' young people.

For more information on the work we do head to [ssyi.club](http://ssyi.club) or contact our Lead Youth Worker Zac on 07599 024210 or [zac.britton@ssyi.club](mailto:zac.britton@ssyi.club) or Kirsty Townsend [admin@ssyi.club](mailto:admin@ssyi.club). **Kirsty Townsend**

## Cambridge Flower Club

WE meet at the Memorial Hall, Mill Lane. Whittlesford CB22 4NE on third Thursday evenings.

Refreshments from 6.45pm; demonstration at 7.15pm.

New members welcome! Visitors pay £8.00.

17 August: OPEN MEETING - demonstrator Annette Urquart - 'The Sound of Rhubarb' with wine & buffet refreshments. Visitors £15.

21 September : Celebrating late summer. In-house demonstrations

For more information about these meetings or to enquire about joining Cambridge Flower Club please phone Freda Orgee on 891464 or email [fredaorgee@gmail.com](mailto:fredaorgee@gmail.com). **Sian Davies**



## DAVID FOX CARPENTRY

*PURPOSE-MADE  
JOINERY AND  
FITTED FURNITURE*

Unit 4, Granta Terrace,  
Stapleford  
Cambridge  
Tel: (01223) 845143



Specializing In Electrical  
Work Within Domestic  
Installations

36 Haverhill Road, Stapleford,  
Cambridge CB22 5BX

07704493920  
enquiries@scpelectrical.co.uk

All types of  
carpentry work  
undertaken

Phone  
01223 842440  
for free prompt estimate

### STEVE BOND

3 Cherrytree Avenue  
Stapleford  
Cambridge



01223 832 928  
www.Rothwells.biz

### *Carpet, Stone, Upholstery and Rug Cleaning*

Rothwell's has been in business since 1993.  
We're an honest local family firm.  
Our large truck-mounted machines mean more  
cleaning and drying power.

Members of both the NCCA and TACCA.  
We will move the furniture for a thorough clean.  
100% satisfaction or it's FREE.

*Call Oliver and Max Campbell for expert help  
today.*

# DAY

CHARTERED  
CERTIFIED  
ACCOUNTANTS

## Do you want more control over your business accounts, or want to organise your personal tax situation more effectively?

We are a friendly team of qualified accountants who can help you reach the potential of your business and give you expert professional accounting and tax advice using the latest technology to work for you in achieving your goals.

We can deal with all matters relating to business tax and accounting including online bookkeeping, VAT

and PAYE matters. Bespoke all inclusive packages are available from £145 plus VAT pcm.

Private clients can be confident that we will deal efficiently with tax return preparation and all aspects of tax planning.

To arrange an informal chat or a meeting please contact us at:

Quern House, Mill Court, Great Shelford, Cambridge, CB22 5LD

T: 01223 506533 F: 01223 363810 E: hello@day-accountants.com W: www.day-accountants.com



# Royal British Legion

## Sawston & District Branch



OVER the last few months there have been discussions within the Royal British Legion over branch closures throughout the country. It was agreed to introduce larger and more inclusive districts within cities and urban areas. As a result Sawston & Pampisford became Sawston & District. This change brings many challenges for our branch, with our area now covering outlying villages such as Duxford and the Shelfords. During the next few months we will offer support to villages who want Poppy Campaign collection material together with wreaths etc. Details from Branch Secretary Kevin Swann.

Our branch continues to be active with the return of the Newmarket Brass Band to the Challis Garden on Sunday 6 August. (Free entry.)

Our next Breakfast Club is on Saturday 29 July at The Plough PH, Duxford, 9.30am to 10am with discounted price for RBL members, with 2 September earmarked for the next. Non-members welcome.

The City of Ely Branch is organising a tour to Normandy (4 to 8 September). For those with links to local Armed Forces Breakfast Clubs, please pass the information on to them.

Although current costs are £600 per person it is hoped further specific fund raising may reduce this. Further details from: email [CityofEly.chairman@rbl.community](mailto:CityofEly.chairman@rbl.community) or phone Dave Martin on 07748 592148.

For more information please contact Branch Secretary, Kevin Swann on 07496 517859 after 6pm. (Please leave a contact number and message if Kevin is unable to take your call.) **Kevin Swann**

## Cambridge and District Branch of The British Cactus and Succulent Society

OUR next monthly meeting will be held on Wednesday 9 August in Great Shelford Memorial Hall at 7.30pm. We look forward to welcoming anyone interested in cacti and succulents along to our meetings.

There will be an exhibit table top competition for our members judged by a local expert. Also plants for sale, a raffle and refreshments. The speaker is Paul Hoxey talking about the cacti of the Rio Mantaro, Peru.

Please do come and we what we grow, discover how and why we grow them and more about these unique and fascinating plants. **Jacqui Arbon**



QUALITY FLOORING SUPPLY,  
INSTALLATION & AFTERCARE

## Specialists in Wood Flooring, Carpets & Vinyl Flooring Solutions

*"What a fantastic company. Knowledgeable, friendly staff & quality services. My company has used Art of Flooring on a number of occasions already and have been delighted with the whole experience. Thoroughly recommended & future projects will be coming your way."* Mr Andy Ward, Cambridge

141 Milton Road Cambridge CB4 1XE  
01223 755 802 [www.ArtofFlooring.co.uk](http://www.ArtofFlooring.co.uk)

## The Country Store

Animal feeds, bedding and accessories,  
shooting requirements and country clothing



[www.thecountrystore.co.uk](http://www.thecountrystore.co.uk)

Unit 12a, Sawston Trade Park, Pampisford,  
Cambridge CB22 3EE.  
01223 837977



## LYNNE HORTON INTERIOR DESIGN

Bespoke interior design services of any  
scale, to your needs and budget.

- CURTAINS & BLINDS
- FURNITURE & JOINERY DESIGN
- UPHOLSTERY & SOFT FURNISHINGS
- COLOUR & FABRIC SCHEMES
- BATHROOM DESIGN
- FURNITURE & LIGHTING SOURCING

[www.lynnhortondesign.com](http://www.lynnhortondesign.com)  
[lynne@hortondesign.org](mailto:lynne@hortondesign.org)  
07703816370



**Gentle**  
**Inclusive**  
**Slower-paced**  
**Accessible**

TO ALL BODY SHAPES,  
AGES AND BACKGROUNDS

## Yoga in Stapleford

[WWW.MORNINGFIELDSYOGA.COM](http://WWW.MORNINGFIELDSYOGA.COM)

## Parish Council Chair's report

WITH this year's Village Weekend success behind us, thanks are due to all those who helped in any way or who attended events. More is written elsewhere in the *Messenger*. Numbers were down for some events because of the very hot weather but, overall, and aided by the recently installed WiFi and livestreaming of Glastonbury, an enjoyable time was had by all.

The Parish Council now has only five Councillors when we should have 11 and it is hoped to recruit more. With such a small number of Parish Councillors and increased workload shared across such a small group, it is difficult to ensure that the parish's voice is heard on important issues and that improvements in the village which would benefit everyone are achieved. Advertisements have been placed in the *Messenger*, online and on notice boards but no applications have been received so far.

At the July Parish Council meeting, Councillors voted to investigate a merger with Great Shelford Parish Council. A Local Governance Review would need to take place over a period of six months and then a proposal taken to the Civic Affairs Committee for Full Council consideration. The electorate of both parishes would need to be consulted. There are advantages and disadvantages to a merger. Benefits could include a shared responsibility, larger budget, and more councillors with reduced workload. Disadvantages could include an increase in the precept (that part of local taxation devolved to the Parish Council to manage village affairs) and possible loss of autonomy. For the present, it was voted that Stapleford Parish Council agrees to a Joint Working Group with Great Shelford Parish Council on issues concerning and affecting both parishes, such as transport and planning.

Work is ongoing with CCC Highways to improve the state of the roads and paths in the parish and to ensure that those with mobility issues are not stuck in their homes because they cannot negotiate pathways. For the same reason, it would be helpful if householders could cut back their vegetation if it is overhanging public paths.

Work on the Neighbourhood Plan is forging ahead and a vote of thanks was given to Jenny Flynn for her work on this. It is hoped that this will be completed in late 2024.

A new caretaker has been appointed by Great Shelford Parish Council and he will be undertaking some duties for Stapleford, including checking the Pavilion.

A new sign for the Pavilion will be installed soon, making the entrance more easily visible and lit at night. Some remedial work will be undertaken

by Kompan on the surface around the play equipment. Work will be undertaken on the bollards by the MUGA which are not functioning properly. Now that the telephone box has been repainted, parishioners are invited to send the Clerk suggestions as to its future use.

The next Parish Council meeting is on 31 August at 7pm in the Jubilee Pavilion. There will be no meeting in September. **Gillian Pett**

## About our new parish councillor



STAPLEFORD Parish Council welcomes a new councillor, Miranda Harper. Miranda writes:

I've lived most of my life in Cambridge, but moved to Stapleford when I retired 12 years ago. My career was mainly in education. I taught for two years at Whittlesford Primary School and then left to have my three children. While they were growing up, I was a landlady for the Bell School of Languages and am still in touch with many of the students who stayed with us. I then worked for the Oxford & Cambridge Schools Examination Board and ran several A Level subjects. When it was merged with the University of Cambridge Local Examinations Syndicate in the early 1990s, I took over the running of GCSE History for schools in the UK. I retired from the Syndicate in January 2011. I love living in Stapleford and hearing the bells of the beautiful medieval church of St Andrew's. I feel passionate about protecting the countryside around the village and am determined to preserve it.

## Better Ways for Busways update



STAPLEFORD'S Village Weekend was a great opportunity to find out more about Better Ways for Busways and our campaign for a more environmentally-friendly alternative to a bus road through Stapleford greenbelt. With residents attracted by our three large tractors, we were kept busy throughout the afternoon with a fun competition and an encouraging sign-up of support.

If you haven't already, please sign our petition asking decision-makers to consider an alternative route for buses, adjacent to the A1307: [change.org/p/save-south-east-cambridge-countryside](http://change.org/p/save-south-east-cambridge-countryside). The petition will be presented to local politicians in September, when they are due to decide about this scheme. Over 2,750 people have signed so far. Do encourage friends, family and colleagues to sign as well. **Howard Kettel**,

# Neighbourhood Plan update

Never has a Neighbourhood Plan been more necessary or timely



## Michael Gove weighs in

SINCE Autumn 2021, a steering group of Stapleford and Great Shelford residents and parish councillors has been working to produce a combined Neighbourhood Plan (NP) on behalf of our parishes. If you ever wondered why we started along this path, read on...

Many residents will have seen the latest news about MP Michael Gove's plan to turn Cambridge into Britain's Silicon Valley. As the Sunday Times reported on 9 July, "...the proposals envisage a huge expansion of the city, which has about 150,000 residents. This includes identifying large swathes of land to construct new business parks, laboratories and science hubs. Local councils in the region are already considering plans for tens of thousands of new homes by 2040 but Gove's department believes this could be increased to between 200,000 and 250,000 homes."

And if you think this plan could die with a potentially out-going Conservative government, the Guardian (10 July) suggests otherwise: "...the blueprint would still be there to pick up and tweak if an incoming Labour government felt like taking the heat for it, on the grounds that if all parties say they want to build more houses then they have to mean it and they also have to build where people want or need to live."

At the time of writing, there have been all manner of responses to the announcement. Our MP, Anthony Browne, has described it as "highly speculative", "simply impossible given our failing water supplies" and has



Independent specialist for all things  
**Audi, VW, Seat, Skoda & VW Commercial**

- ❖ VWG Servicing
- ❖ VWG Repairs
- ❖ VWG Diagnostics
- ❖ VWG Performance Upgrades
- ❖ VWG Genuine Parts



[quattro-tech.co.uk](http://quattro-tech.co.uk)

**SALES ❖ AIR CON SERVICING ❖ 4 WHEEL ALIGNMENT ❖ MOTs**

revo Authorised Dealer

Unit 11A, Solopark Trading Estate, Station Road,  
Pampisford, Cambridge CB22 3HB  
[Info.cambridge@quattro-tech.co.uk](mailto:Info.cambridge@quattro-tech.co.uk) 01223 800850



[f @QuattroTechLtd](https://www.facebook.com/QuattroTechLtd) [t @QuattroTechLtd](https://twitter.com/QuattroTechLtd) [i @quattrotechltd](https://www.instagram.com/quattrotechltd)



committed to oppose it in its current form. The City Council has claimed ignorance of the plans and said that it will be opposing them. So, chaos and confusion currently reign, and we're stuck right in the middle of it all.

**Stapleford and Great Shelford residents prepare to state their case**

We need a NP. It's not about saying 'no' to development (in fact, NPs explicitly can't do that). It's about making sure that we have a say in how we want our area to develop and that identified local needs and valued places and spaces are not overlooked in the rapid economic growth which our wider region has been targeted to deliver. Policies in our NP will ultimately have equal weight to those in the Local Plan and National Planning Policy Framework when assessing all planning applications in our area.

In light of this, the outcomes of our second NP community consultation in April-May this year are both pertinent and poignant. At a top level, key findings across all consultation topics were:

- 82% of respondents supported the draft vision statement
- support for all 10 draft objectives substantially outstripped any opposition
  - if some elements of the NP have to be prioritised over others, objectives which seek to protect our rural setting and landscape, mitigate the effects of climate change, and improve community amenities and infrastructure were perceived to be most important
    - three-quarters of respondents agreed with the principle of community-led renewable energy schemes in our area
    - over 75% of respondents supported equal access to our countryside, meaning that new and improved routes into our countryside should, where practicable, be suitable for all forms of non-car use; however, path segregation may sometimes be required for safety reasons
      - with respect to meeting housing needs, there is most support for adaptable homes, for affordable homes for people with strong local connections, and for more affordable housing options for older people
      - there is little current support for community-led affordable housing schemes, such as rural exception sites, most likely because of local opposition to greenbelt development in general
        - all areas of visually important open land were valued by consultation participants and a handful more were proposed for inclusion. Top of the poll were the Recreation Grounds and their adjoining open green spaces within each village
        - all 26 views presented in the consultation paper were considered 'very important' or 'important' to our area. Overall, views to and from high



# HOLIDAYS FOR THE CULTURALLY CURIOUS

ACE CULTURAL TOURS

[aceculturaltours.co.uk](http://aceculturaltours.co.uk) | 01223 841055



ground at Magog Down and/or Wandlebury Country Park were most valued

- Collier Field and Grange Field both attracted support for Local Green Space designation and respondents proposed a number of other green spaces for consideration
  - all of the ‘countryside frontages’ which sweep into our built-up area are valued; that between properties on Gog Magog Way and Chalk Hill (Stapleford) gained most support, whilst pasture at De Freville Farm (Great Shelford) attracted least
    - residents would prioritise active travel improvements to nearby recreational spaces, to local shops and to the City over those to schools, biomedical sites and links to the wider travel network
    - existing active travel routes could be made to work harder by being upgraded, joining safely with other active travel routes, and hence attracting more users; the personal safety of vulnerable users also needs greater consideration
    - respondents prioritised the following off-road routes for improvement and/or extension: the path alongside Haverhill Road from Stapleford village to Magog Down; a bridge over the River Cam at Great Shelford Rec; the Drift Track to the south-east of Haverhill Road, Stapleford.

There is a lot more detail and commentary about these findings – and about others which are less easy to summarise in a single bullet point – in the full report on the consultation. It is available to read digitally at [greatshelfordparishcouncil.gov.uk/SGSNPlan](http://greatshelfordparishcouncil.gov.uk/SGSNPlan) and in hard copy at Great Shelford Library.

### **Full steam ahead**

We are on track to complete our NP before the end of 2024. It’s a long and complicated process and we’re moving through it as fast as we can; some aspects (e.g. stakeholder consultation and community referendum) are governed by regulation and have minimum time periods attached to them so are outside of our control.

We have now started work on the first draft of our NP, taking on board residents’ comments about our proposed vision and objectives as we translate them into planning policies for our area.

You can read more about the NP process and our progress to date on our dedicated webpages at [greatshelfordparishcouncil.gov.uk/SGSNPlan](http://greatshelfordparishcouncil.gov.uk/SGSNPlan).

**Jenny Flynn**, Chair of the Neighbourhood Plan steering group,  
[neighbourhood.planning@staplefordparishcouncil.gov.uk](mailto:neighbourhood.planning@staplefordparishcouncil.gov.uk)

# Stapleford Parish Council

staplefordparishcouncil.gov.uk



## COUNCILLORS

Gillian Pett (Chair)	gpett@staplefordparishcouncil.gov.uk
Anna Disley-Stevens	annadstevens@staplefordparishcouncil.gov.uk
Barbara Ann Kettel	bkettel@staplefordparishcouncil.gov.uk
Howard Kettel	hkettelstaplefordpc@gmail.com
Miranda Harper	mharperstaplefordpc@gmail.com

## CLERK

Belinda Irons 07472 398823 clerk@staplefordparishcouncil.gov.uk  
Address for correspondence: 14 Crawley End, Chrishall, Nr Royston,  
Herts, SG8 8QL

## SOUTH CAMBS DISTRICT COUNCILLORS

Peter Fane, 27 London Road, Great Shelford CB22 5DB  
peterfane1@live.co.uk 843861 / 07802 256 861  
Will Jackson-Wood  
cllr.jackson-wood@scambs.gov.uk 07873 731597

## CAMBRIDGE COUNTY COUNCILLOR

Brian Milnes  
brian.milnes@cambridgeshire.gov.uk 07971 886 113

*Stapleford Parish Council normally meets publicly on the first Thursday of every month. Please check our website for the latest details*



# Ken Benson

## Heating & Plumbing

**Reliable local tradesman**

Plumbing • Bathrooms • Wet Rooms • Central Heating

**Mob:** 07766 544888

**Email:** kennybenny50@virginmedia.com

## PEASGOOD & SKEATES

### THE FAMILY FUNERAL SERVICE

Purpose built funeral homes with private chapels of rest  
Home arrangements available  
Funeral pre-planning - a wide range of memorials

45 Moorfield Rd  
**DUXFORD**  
01223 833463

48a High Street  
**SAWSTON**  
01223 791065

enquiries@peasgoodandskeates.co.uk

also in Cambridge, Haverhill  
and Saffron Walden

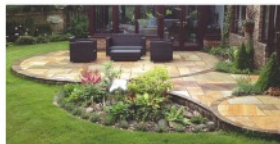
[www.peasgoodandskeates.co.uk](http://www.peasgoodandskeates.co.uk)



Summit Landscapes

## LANDSCAPES

PAVING • DRIVEWAYS  
BRICKWORK • CARPENTRY  
GROUNDWORKS



[www.landscapingpaving.co.uk](http://www.landscapingpaving.co.uk)

PHONE

**01223 929 394**

## JASON KIRBY

Professional Painting  
& Decorating Ltd

*A Professional Service  
from Start to Finish*

Tel: 01954 211775  
[www.jasonkirbyltd.co.uk](http://www.jasonkirbyltd.co.uk)



The newly refurbished  
Zara Indian Cuisine is  
open for dine-in and  
takeaways.

Zara Indian Cuisine  
offers a sophisticated yet  
relaxed dining experience

RESERVATION & ORDER ONLINE AT  
[www.zarashelford.com](http://www.zarashelford.com)

1 Hinton Way, Great Shelford, CB22 5AX  
01223 846 668 / 01223 844 244



# KITCHENSMITHS

4 STATION ROAD, HISTON, CAMBRIDGE, CB24 9LQ

01223 236 456

[info@kitchensmiths.co.uk](mailto:info@kitchensmiths.co.uk)

[www.kitchensmiths.co.uk](http://www.kitchensmiths.co.uk)

