

Stapleford

Ne Nuntium Necare!

MESSENGER

January 2023

Volume 82 No 1

Price 90p

Vanishing horizons?

**Rural loveliness possibly lost to the Busway?
See page 51.**

Painting by Jill Gardner

The Messenger is the Parish magazine for the whole community of Stapleford.

We have a reputation for excellence - but don't just take our word for it.



Extracts from Google reviews

"A first class experience throughout the sale of my house."

"A really excellent service - friendly, efficient, and doing the right thing for landlords and tenants."



If you are looking for a property agent in Stapleford - get in touch and discover the Bush difference



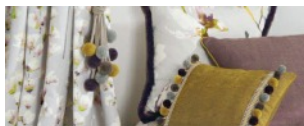
01223 246262
bushsales.co.uk



01223 508085
bushlettings.co.uk



Established. Independent. Passionate.



Bespoke Curtains & Blinds

suecrowcurtains.com



01223 836498

Great Shelford Solicitors

DAVIES
solicitors advocates mediators

- Family
- Divorce & Separation
- Children
- Civil Disputes
- Wills & Probate
- Estate & Tax Planning
- Powers of Attorney
- Court of Protection

For a quality and attentive service
Please Call: **01223 842211**

www.daviesolicitors.co.uk
law@daviesolicitors.co.uk
30 Woollards Lane, Great Shelford, Cambridge CB22 5LZ

Free and easy parking

T&J Tyres & Autocentre

WE ARE NOW IN A NEW LOCATION. CALL US FOR A FREE QUOTE TODAY!

- New tyres
- Part-worn tyres
- Wheel balancing
- 4-wheel alignment
- Locking wheel nut removal
- Servicing
- Brakes fitted
- Shock absorbers
- Exhaust repairs
- Diagnostics
- Batteries
- Engine carbon cleaning
- Air conditioning
- And more...

ALL WHILE YOU WAIT

Opening hours:
Mon-Fri: 09:00-18:00
Saturday: 10:00-16:00
Sunday: CLOSED

01223 845155

Unit 2, Hillstead Farm, Hinton Way, Great Shelford, Cambridge, CB22 5AN



WATERLILIES

SKIN CLINIC • BEAUTY

Call **01223 844700**

Book online at

www.waterlilies.org.uk

2d Dolphin Way, Off London Road, Stapleford, CB22 5DW

THE CAMBRIDGE WILL WRITING Company

OFFERING A COMPREHENSIVE RANGE OF SERVICES

- Wills
- Lasting Power of Attorneys
- Inheritance Tax Planning
- Trusts

and specialising in home visits, both in the evening and at weekends



For a no obligation discussion, please contact us on

T: 01223 503688 or 07817 206659

E: info@cambridgewillwriting.co.uk

Full price list available on request.

Who's who at St Andrew's

www.standrewstapleford.org

Parish priest

Rev Dr Simon Taylor 840256

Curate

Rev Lucinda Howard 07763 477821

Churchwarden

Alastair MacGregor
07855 269844

Parish Safeguarding Officer

Rob Needle 844227

Parish Administrator

Gillian Sanders 07752 373176

Youthworker

Zoe Clayton 894656

Children's Ministry

Sue Brown 01954 264246

Director of Music

John Bryden 07803 706847

PCC secretary

Nicky West 07927 531719

Treasurer

Chris Bow 841982

Verger

Clare Kerr 842984

Captain of bellringers

Tony Smith 843379

Church flowers

Jackie Nettleton 721366

Stapleford-Nachingwea Link

Trish Maude 242263

Mothers' Union

Hilary Street 840548

Johnson Memorial Hall

Gillian Sanders 07752 373176

Friends of St Andrew's

Tony Hore 843796

Gift Aid secretary

Lisa MacGregor 07523 668731

SERVICES at St ANDREW'S

See the St Andrew's Noticeboard for this month, and the church website at standrewstapleford.org for full details. The services include:

9am BCP or CW Communion

10.30am Communion, Services of the Word, Messy Church and Forest Church

SERVICES AT OTHER CHURCHES

Our Lady of Lourdes, Sawston (Roman Catholic)

Sundays 8.45am and 11.15am

Shelford Free Church (Baptist)

Sundays 10.30am

Christenings and Weddings

Christenings take place during Sunday worship.

For both Christenings and Weddings, contact the parish priest.

Stapleford MESSENGER

Editor

Contact staplefordmessenger@gmail.com

Advertising

Contact stapleford.ads@gmail.com

Subscriptions/Distribution

Contact;

Valerie Powell 843415 or vaz@fairshares.co.uk

The subscription for the Stapleford MESSENGER delivered to your home is £9 per annum (£25 by post): single copies 90p.

From the Rev Dr Simon Taylor

DO you remember *Letter from America*? It was a weekly Radio 4 programme that ran from 1946 to 2004, every edition presented by Alistair Cooke. It was 15 minutes of him talking about something American, with his gentle insights, sometimes into the news of the day, sometimes into some aspect of small town life. It was compelling stuff, beautifully delivered. If you want to get an idea of old-style reporting, lots of the broadcasts can be accessed on the BBC website. Well worth delving into. Nothing lasts that long unless it is really good.

Perhaps the most famous of Cooke's broadcasts was the last one before President Nixon resigned. In 1972 Nixon's re-election team hatched a plan for illegal activities against the Democratic party, including a burglary at the party headquarters to copy documents and install listening devices. It did not take long for the burglars to be arrested, and for investigations to lead to Nixon's team. Then the question was how much Nixon and senior White House staff personally knew. Was there a high-level cover up going on? Some of Nixon's aides nobly fell on their swords to try to protect him, but Woodward and Bernstein, two reporters at the Washington Post, would not let go. Their persistence led eventually to hearings in the Senate, during which it came out that meetings in the Oval Office of the White House were automatically recorded. Whether Nixon knew what his re-election committee had been planning, or at least knew about the subsequent cover-up, had very likely been recorded. The Senate asked for the tapes. Nixon refused. The Supreme Court ruled he had to hand them over.

The first release of tapes was on 30 July 1974. They showed that Nixon had been aware of the cover-up and had himself authorised payments to try to keep the burglary quiet. A few days earlier the House of Representatives Judiciary Committee had recommended impeachment. The next steps in that process were going to be a decision of the whole House and probably an impeachment trial before the Senate. Further tapes were released in August, and appeared to show that Nixon was involved in a meeting a few days after the burglary to discuss how to stop the FBI investigating it. Faced with the inevitability of impeachment Nixon resigned on a Friday morning in August 1974.

As a reporter Alistair Cooke had a problem. Events were moving fast, but his methods of communication did not. At the time he worked by recording his report to a tape recorder on a Wednesday, then he put the tape on a plane to London. It would reach Broadcasting House ready for broadcasting on Friday evening.

When he recorded on the Wednesday Cooke knew about the final tranche of tapes, but not what would happen exactly. He guessed the denouement was afoot. So he chose to end his broadcast with the now famous phrase ‘the rest you know.’ And by the time it was broadcast we did. Nixon had abdicated and Cooke’s evening audience did indeed know that Nixon was gone and Gerald Ford was being sworn in as replacement.

That phrase, ‘the rest you know’, came to mind because with the World Cup going on I was thinking of taking one of my occasional forays into the world of sport. Staging the competition in Qatar has thrown up an awful lot for football fans and others to reflect on, but we don’t have the result. I might return to it when the dust has settled. At this point it turns out to be possible that England might just have a rather good team this year. But I am writing at an early stage in the competition, just after the Senegal game in the last 16. England played really well, but this is before the quarter final against France, so who knows? We have seen Brazil and Portugal destroy their opponents, so it could all turn out to be the thousandth false dawn in my many decades of following England. It has been a fairly dismal journey, but always with that smidgeon of hope. It is one of God’s ways of teaching me to persist in hopefulness. The rest you know. By the time you read this England might be world champions. Or not.

Living with hope in the midst of turmoil or uncertainty – being able to look forward to a time when ‘the rest you know’ will definitely be true – is a central part of being a Christian. It is one of the themes of Advent, the church’s name for the four weeks before Christmas. In that time we look forward to celebrating the birth of Christ, of course, but also to the time when we believe Jesus will return, his second coming. In human terms that has been a long time coming, but 2,000 years is not long in the grand scheme of things, and is just a blink of God’s eye, so patience is called for.

And hopefulness. Why do we live in hope? Because of the certainty that Jesus Christ was a real person who lived, was crucified, died and lived again. Once someone gets all that – and honestly the evidence is there if you look for it – then you cannot but live in hope. Everything Jesus said, including the seemingly ridiculous statement that he would die and then live again, becomes firm promises to be believed because what he says always turns out to be true. Alistair Cooke said ‘the rest you know’ because he could sense history was playing out in real time and guessed his listeners would know. I am an England optimist despite the lessons of football history, but by January we will know one way or the other. But I am a Christian and live in hope because of what has already happened. On that basis, I know the promises Jesus made are true. **Every blessing to you all, Simon**

St Andrew's Noticeboard

1 JAN	9 AM	NO SERVICE
	10.30 AM	SAID SUNDAY WORSHIP Galatians 4.4-7; Luke 2.15-21 <i>Children of God</i>
8 JAN	9 AM	BCP COMMUNION
	10.30 AM	CW COMMUNION FOR EPIPHANY Ephesians 3.1-12; Matthew 2.1-12 <i>Follow the star</i>
15 JAN	9 AM	BCP COMMUNION
	10.30 AM	SUNDAY WORSHIP Philippians 3.1-14; John 1.29-34 <i>Knowing Christ</i>
	10.30 AM	MESSY CHURCH
22 JAN	9 AM	BCP COMMUNION
	10.30 AM	ALL AGE WORSHIP <i>Talking to God</i>
29 JAN	9 AM	BCP COMMUNION
	10.30 AM	CW COMMUNION FOR CANDLEMAS Malachi 3.1-5; Luke 2.22-40 <i>My eyes have seen your salvation</i>
5 FEB	9 AM	BCP COMMUNION
	10.30 AM	CW COMMUNION Philippians 3.15-21; Matthew 4.12-23 <i>Citizenship in heaven</i>
	10.30 AM	MESSY CHURCH COMMUNION

The church is open every day as a place to come and pray or enjoy a moment of quiet reflection. Messy Church takes place in the Johnson Hall during the winter. Everything else is in the church.

FROM THE REGISTERS

10 December – Wedding of Sophie McGurk & Oliver Johnson

We're waiting for your story!

HAVE you a story to tell or an event to publicise? Or perhaps you have an opinion to share on an issue that is important to you. If so, drop us a line on staplefordmessenger@gmail.com - after all, it's your magazine and we would love to hear from you.

St Andrew's Choir Now recruiting

Thursday evenings
Main practice 7pm to 8.15pm
Main Sunday service 10.30am
St Andrew's Church, Mingle Lane Stapleford CB22 5SY

Choir experience helpful

Specially wanted: adults from 18 to 30.

Children from 7 to 12 please come to SingPlus on
(Termtime) Wednesdays 3.45pm to 5.15pm

Contact: John Bryden 07803 706847 or music@standrewstapleford.org.



Deadline for the FEBRUARY Messenger

Please submit copy **NO LATER THAN FRIDAY 13 JANUARY**

By email (Word or similar attachment) to staplefordmessenger@gmail.com

The Messenger reserves the right to edit material. Please include contact postal address with all letters to the Editor.

Advertising queries to stapleford.ads@gmail.com

Subscription queries to Valerie Powell on 843415 or vaz@fairshares.co.uk

The views expressed are those of the contributors and do not necessarily reflect the views of the *Messenger*.

Advertisements are accepted in good faith but customers should satisfy themselves that advertisers are able to supply the services they offer.

Thinking of
selling or letting
your property?



**Our Great Shelford
team can help!**

Whether it's advice about
getting your property ready
to sell, discussing the rental
market or simply to find out
what your property is worth,
give us a call.

We are always happy to
chat about the local market.

01223 800860
shelford@rah.co.uk
rah.co.uk



Shelford

Tree Service Ltd

**Professional Tree Surgeons
covering Cambridgeshire
and Hertfordshire**

Fully Qualified & Insured

01763 208361

07743406569

shelfordtreeservice.co.uk

GATWARD & SONS LTD

BUILDING ON EXPERIENCE
CARPENTRY, JOINERY & BUILDING CONTRACTORS

 **01223 839490**

 **07557 735247**

 **contact@gatwardandsons.co.uk**

BASED IN STAPLEFORD

**EXTENSIONS
CONVERSIONS
RENOVATIONS
ALTERATIONS**

Heartfelt

I AM writing at our wooden kitchen table: solid, steady, secure. It has seen many an endeavour worked on it. Sometimes I wonder if I might see letters imprinted on the surface. What sort of pattern would it form? Would the words inspire, make an impression or simply appear disjointed, like lone jigsaw pieces? Puzzles need putting together, to make the picture complete. Yet in pottery imperfection is expected. No two hand made pieces can be the same. It made me think.

Life has ups and downs. Looking back over the past year we recollect days we would rather forget, for many reasons. Yet difficulties cause happiness to stand out. Recently I heard a song with a line saying, 'Smile though your heart is breaking.' Yes, great thought but on certain occasions tough to manage. I heard a remark that if we did not experience difficult



days we'd not value good. One without the other and balance is not achieved. Perceptive, wise comment. Upsets are inevitable. The often over used word 'emotion' fits. Behind closed doors we can feel justified in sadness. 'Soldiering on' might be hard. Hearts may ache or break, all of us recognising the sensations. As human beings we often swallow hurt, smile and carry on. Why don't we talk to one another? I think we would be surprised at how much we had in common. Caring and sharing helps build and reassure.

Last year was quite a trial for everyone. 'A problem shared is a problem halved,' but admitting that need makes for damaging pride. Honesty is important... Positives are evident too. The best times form happy memories. Treasured opportunities. A word, look, touch, taste or aromatic scent can make for contentment. No need for costly gifts. Impulse encourages, friends nurture and sustain. My heartfelt thanks go out to those offering us support. Colour in life becomes richer through kindness. Glorious golden glows of candles, deep green foliage and rich red berries, provide layers of delight. Fresh wonder awaits.

As we dust away glitter, pine needles, recycle wrapping paper and cards and finish off seasonal fare may the heart of Christmas remain. Diaries and calendars seek entries. Pages beckon. Whilst resolutions are made, help us focus on others, appreciating qualities we each have; including ourselves. Every person has a part to play in our special community. I wish us all unity, patience, integrity, courage and above all hope, peace and love.

Judith Lee

FOOT PROBLEMS?

Call **07939 227195**

Foot treatment in the comfort of your home

Treatments cover:

- Nail Cutting and other nail conditions
- Corn and callus removal/reduction
- Fungal infections and athletes foot

Celia Kenney

HCPC Registered Podiatrist

The Beechwood Practice | 41 Hills Road
Cambridge CB2 1NT
Call **01223 315541**



PIANO LESSONS

Jacqueline
Cairnduff
CT ABRSM ALCM

All ages welcome.
Also aural training & theory.

2 Sternes Way,
Stapleford CB22 5DA

01223 842912

jcairnduff@hotmail.co.uk

THE GAS SPECIALIST LTD (D Hatter)

Service, installation, and repair of all domestic gas appliances: cookers, fires; specialist in boiler repairs and servicing.

Gas Safe Reg 131405. Est 1994.

01223 844866

“The Most Thorough Cleaning Ever Seen or It’s Free!”

WE SPECIALISE IN CLEANING:

- Carpets,
- Upholstery
- Leather
- Fine Rugs
- Tiles/Stone & Grout
- Wood Sanding and Finishing

-10%
Discount to all new customers



Laurence & Pierre de Wet

01223 863 632

www.artofclean.co.uk



STEVE the PLUMBER

Steve the Plumber is a friendly, reliable, locally based plumber who would love to help you out! All those jobs you thought weren't worth getting someone out for I would love to do for you.

No job too small and individually priced at great rates.

07803 922517 or www.stevetheplumbersawston.co.uk.

CHIMNEY SWEEP

J. L. WIGHT

Guild of Master
Chimney Sweeps



Certificates issued.
Advice given /
problems solved.

01954 253315

www.camsweep.co.uk

9 Cow Lane, Rampton

Stapleford-Nachingwea Link



AT the beginning of December we held the annual St Andrew's Stapleford - Nachingwea Christmas Fair.

This was a very enjoyable and successful event with a broad range of stalls, offering a wide variety of gifts, including Fair Trade items, woodturning and other crafts, Christmas cards, a tombola and raffle as well as delicious refreshments. The morning proved to be a great community event with a lively buzz.



Trish Maude, Chair of the Stapleford Link hard at work during the Fair

Huge thanks to everyone who helped and to all who came along and contributed to the ambience of the Fair, a magnificent effort!

The total raised was just over £2,000.

Grateful thanks to the following local businesses for their support: Antonio's Barber Shop, Barker Bros Butchers, Blossom Health & Beauty, Cooke Curtis & Co, Lucy Warner Hair, NY Wines, Rayments Garage, Redmayne, Arnold & Harris, Sofie George Beauty Lounge, Tesco Express, The Gog Farm Shop, The Jade Pathway, The Three Horseshoes, Travis Perkins, Tucker Gardner, Waitrose, Waterlillies. **Trish Maude**

More from Nachingwea schools



Kevin Bushiri, Chair of the Nachingwea Link presenting prizes at the end of the English course he has been running for students who have recently graduated from Primary School and are eligible for the start of secondary education in January

D.L.M. AUTOS

63a Orchard Road, Great Shelford CB22 5AA

MOT - SERVICE - REPAIR

01223 844828

www.dlmautos.co.uk

St Andrew's Little Fishes

Birth to Pre-School

Mondays in term time

9.15 to 11 am

In the Johnson Hall, Gog Magog Way

Free Play, Crafts, Games, Songs & Stories
Meet new friends over a #cup of coffee.

Volunteers welcomed to play, chat and make coffee.

For more information contact Fiona Holliday at
layminister@standrewstapleford.org or 478923



Mothers' Union News



WE start the New Year with a repeat of our popular meeting in May, when members brought a 'Treasured Possession' to show the

meeting and to say why it was treasured. So do please bring along something you hold dear and tell other members the reason why it is precious to you. This meeting will be on 26 January at 2.30pm – the committee has decided to continue afternoon-only meetings for the coming year.

Stapleford Mothers' Union thanks everyone who contributed to the toiletries collection for the Cambridge Women's Refuge held in November. Several large cartons of useful items were passed to the MU Outreach Officer, for onward delivery to the Refuge. Your generosity is greatly appreciated both by the women of the Refuge and also the MU here, in that we are supporting the Days of Activism Against Gender-Based Violence, a campaign supported by the national Mothers' Union. Thank you once again for your tremendous response to our appeal. Subscriptions are now due - £21 to Mary, please.

All good wishes to all members for a Happy New Year. Hilary Street.

Stapleford Messenger subscriptions

THANK you for supporting the *Stapleford Messenger* in 2022. Annual subscriptions are now due for renewal. The annual charge is now £9 for 12 copies. You can pay by:

1. Cash or cheque (payable to Stapleford PCC).
2. Post or deliver an envelope containing cash or a cheque to Valerie Powell, at 53 Bury Road, Stapleford (include a note of your address for our reference).
3. Pay online: sort code 30-91-74, account no. 01263363, account name 'Stapleford PCC'.

Please give the first line of your address as the reference for the transfer.

Email vaz@fairshares.co.uk or text 07756 973939 to notify us of your payment.

If you know of anyone else who may like to subscribe, please ask them to contact Valerie Powell, Distribution Officer, on 843415

Valerie Powell, The Stapleford Messenger Team

**OvenPad
Cleaning Services**

I will professionally and efficiently clean ovens, ranges, Agas, ceramic hobs, extractors, microwaves, and BBQs.

It's a dirty job, why not give me a call?

Please contact **Paddy Kelly** on
Tel: 01638 742703
Mobile: 0775 263 1343
Email: info@ovenpad.com
www.ovenpad.com

Great Value

KASH STORES

Local Service

A great deal more from your local store!

- General groceries • Fresh produce • Confectionery
• In-store bakery • Off-licence • Photocopying
• Newspapers, magazines & stationery • Lottery
• Dry Cleaning • Passport photos

Full Post Office counter facilities

33-35 Hinton Way, Great Shelford

Tel: 01223 843307

Shop opening times:

Mon-Sat:
7:00am - 6:30pm
Sunday:
7:00am - 1:00pm



Post Office opening:

Mon-Fri: 9am - 5:30pm
Sat: 9am - 1:00pm
Sun: CLOSED

**Neil's
Gent's Hair Stylist
of Stapleford**

Is offering professional gents hairstyling at competitive prices

30 years' experience

4a Bar Lane, Stapleford
Call 01223 844411 for an appointment



**RUSSELL COOPER
GARDENING**

(QUALIFIED HORTICULTURIST EST 1987)

**ALL ASPECTS OF GARDENING
WORK CARRIED OUT BY A
PROFESSIONAL LOCAL
BUSINESS**

**MONTHLY MANAGEMENT
OF YOUR GARDEN
UNDERTAKEN**

**Tel: 01223 830575
Mobile: 07702 456797**



**O N CHALLIS
Painter and Decorator**

**Tel: 01223 841646
Mob: 07939 607653**

All types of interior and exterior work undertaken.

High-class quality workmanship guaranteed.



DOCKY BARN CAFÉ

Copley Hill Business Park
Cambridge Road
Babraham, Cambridge
CB22 3GN

A warm welcome awaits all visitors to the
Docky Barn café.

Offering a wonderful choice of beverages, homemade cakes, or more substantial fare, butchery, fruit and vegetables, we look forward to seeing you there!

From your soon-to-be vicar Simon Taylor

HERE is something you may not know. At the moment Stapleford does not have a vicar.

I know I do lots of vicar-y stuff, and I even occasionally look like one, but legally speaking I am not one.

That odd position came about in a number of tiny steps. Years ago Stapleford had a full-time paid vicar, then at some point it was reduced to a part-time role but still paid, then it became an unpaid part-time role (so-called House for Duty), but still the post-holder was legally the vicar.



Then when I was appointed the deal was that the vicar of Great Shelford technically became also the vicar of Stapleford and I became his assistant, working in Stapleford.

Looking back on it the whole process looks rather like a gradual downgrading, with my appointment as a part-time unpaid assistant looking like the last possible step before doing away with the role of a priest just for Stapleford entirely. That would not be a good thing - a church without its own bit of a priest can find it difficult to survive, as lots of villages will testify.

But – and I hope this is good news! – after years of work from Stapleford the diocese have agreed that it should have its vicar back, and I will be sworn in by the Archdeacon at our 10.30am service on Sunday 29 January. You are warmly invited to come!

Many larger villages than Stapleford haven't had have their own priest for years. Had it not been for the tenacity of members of the congregation past and present in fighting Stapleford's corner in the councils of the church over the last 30 or so years that would have been the case here, but for the time being at least the future of the church in Stapleford looks just that little bit more secure! Hooray! **Simon**



Looking for a local venue?

The Johnson Hall, next to St Andrew's Church, is an ideal venue for small groups and children's parties. The Hall is **available for hire** for one-off events and regular bookings.

For details please contact **Gillian Sanders:**

Tel: 07752 373 176 **Email:** admin@standrewstapleford.org

SPB Property Maintenance

Professional local business

Fully insured and qualified Plumber, based locally to South Cambridge and surrounding villages. Offering a friendly, reliable and efficient service with references and examples of work available on request.

Free quotes and advice on all jobs, whether big or small!

- Full bathroom and kitchen refurbishments
- General plumbing
- Tiling and plastering
- Gardening needs and monthly grass cutting
- Patio and decking, installation and jet washing
- General DIY and property maintenance
- If your requirement is not listed, please ring and ask!

Contact Simon on:



07581088722



SPBpropertymaintenance66@gmail.com



*Award winning
free house & restaurant
in the heart of the village*

01223 503 402

@hello@threehorseshoes-pub.com

www.threehorseshoes-pub.com



PLUMBING, HEATING
AND MECHANICAL



ELECTRICAL, FIRE
AND SECURITY



REFRIGERATION AND
AIR CONDITIONING



RENEWABLE ENERGY

Domestic & Commercial
e: info@huttie.com t: 01223 292295
www.huttie.com

Red Hen Project

FOR many years St Andrew's has held a Toy Service in the run-up to Christmas. The congregation has always been very generous in donating new toys, games and books for children of all ages and for the last few years these generous gifts have been donated to us at the Red Hen Project.



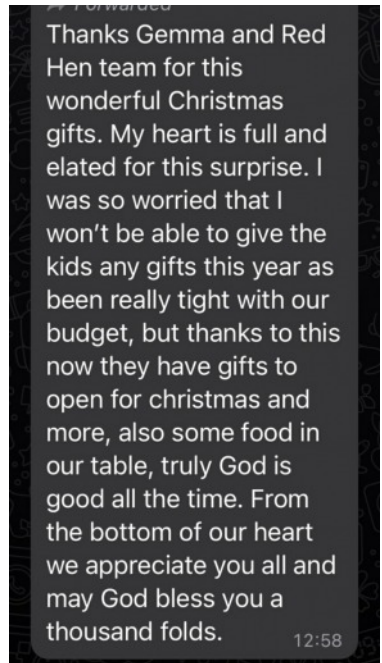
Red Hen is about to enter its 25th year and is a small charity founded by three head teachers to the north of the city. Cambridge remains one of the most unequal cities in the UK. One in six children in Cambridgeshire were living in poverty before the pandemic.

Our skilled team supports families as they try and deal with all sorts of challenges that can get in the way of children thriving in school. Sometimes it is short term practical help that is required but often it is longer and focused on the root causes of problems.

Being a parent is hard and it is much harder if you are isolated, struggling financially or hit by an unexpected crisis when you are only just managing to get by.

We also run weekly drop-in sessions, summer trips and parenting courses as we aim to be the 'village that it takes to raise a child'.

In an ideal world we would not need to exist but things are not set to get easier any time soon and Red Hen is never more needed. If you feel able to support we would be very grateful. Just visit redhenproject.org/xmas. Elsewhere on the website you can read some family stories, more about our new strategic plan and other ways that you can help. With our best wishes for the rest of the holiday season!
Lesley Ford, Chair of Trustees



Message of thanks from a recipient

Yesteryear

SYLVIA Morris looks at events in the village in the month of January over the years.

Punctuation, spelling and capital letters are exactly as printed at the time.

1814

SALE. By auction, on Friday, February 18th, at Hills Farm, Stapleford. The very valuable Farming Live and Dead Stock upon the said farm, comprising nine very superior cart geldings, in high condition, full of bone and high symmetry, chiefly jet blacks, and dark brown, ages from 4 to 8, but the greater part 5 and 6 years old, many of them of strength equal to a road waggon or dray, nine such horses are very rare to be met with upon one farm; two others of inferior value, three very excellent milch cows, a newly erected road wagon upon iron arms, three new tumbrils, six foot ploughs, three Dutch ploughs, large crab harrows, two sets of stetch harrows, three 5-beam harrows, 2 stetch rolls, market cart, water cart, cart and plough harness, dressing machine, corn screens, swathe rakes, shack forks, cow cribs, ladders, three bloom-iron pans, two steel mills, forks, rakes, riddles, etc. as will appear in Catalogues, to be had at the newly erected Farming Buildings adjoining the turnpike road leading from Linton to Cambridge, near Gogmagog Hills.

1876

GOGMAGOG. Yesterday week the Duke of Leeds, with his accustomed liberality, made glad the hearts of all the labourers and their wives working on his estate, with a spread of good old English fare of roast beef and plum pudding. After dinner, the Duke and Duchess, and two eldest sons, paid a visit to their guests, when the Marquis of Carmarthen gave to each labourer's wife 1 lb. of tea and 5s., and Lord Francis Osborne presented 1 lb. tobacco and 2s. 6d. to each man. The health of the noble Duke and his family was drunk with hearty good cheers with wishes for a happy new year to all. In the evening they were enlivened with the music of the Bradley band, and a very pleasant time was spent, till the clock chimed its last of the old year, when all parted for their respective homes, having spent a most pleasant day.

1900

THE BOER WAR

CAMBS AND HUNTS MEN AT THE FRONT

Stapleford. Farnham. Private J. Married. Suffolk Regiment. Farnham, Private Albert. Single. Suffolk Regiment.

1925

PRESENTATION. An interesting presentation was made to Mrs Ford, head teacher of Stapleford Council School on 19 December on the occasion of her leaving the School. On behalf of the managers, Mr H H Lenton presented her with a worktable, and the pupils of the school gave her a handbag. Great regret was expressed at losing so able a teacher.

1967

"Mr Giddens reported on soap suds in the ditch along Bar Lane and it was agreed to watch the situation to ensure that a nuisance was not created." *From the Parish Council Minutes*)

Stapleford Horticultural Society

AFTER members enjoyed our annual Christmas Dinner at the Gog Magog Golf Club in December, it's back to business in January when we resume our talks programme. This time we are welcoming back Zsuzsa Serer to talk on the topic of Growing Orchids at Home. With many orchids available at the local garden centre this is something we could all try in the New Year.



We are meeting on Thursday 12 January in the Johnson Hall, with the talk starting at 7.45pm. As usual, we welcome guests whom we prefer to regard as potential members! **John Sherwell 841012**

Stapleford History Society

The History of Mackay's Tool Shop and Engineering Firm in Cambridge

A talk by Duncan Mackay, Tuesday 10 January, 7.45pm

All welcome at Stapleford Jubilee Pavilion, CB22 5DQ. Free to members or £3 on the door.





AA

Call me to book lessons
Alistair Gibson
 Tel: 07713 156 737

RAYMENTS GARAGE LIMITED

ESTABLISHED IN 1970

23 ASHEN GREEN, GREAT SHELFORD

MOT, SERVICE AND REPAIRS

EXHAUSTS • TYRES • BATTERIES
 BRAKES • CLUTCHES • SHOCK ABSORBERS
 AIR CONDITIONING SERVICES

TELEPHONE: 01223 843048

EMAIL: john@raymentsgarage.com



Don't Dilly: call Lilley of Sawston

Mobile: 07768 718223

ROTAVATING | TURFING | SEEDING | TREE WORK and PADDOCK, ETC.
 PAVING | LARGE OR SMALL AREAS

FENCING A SPECIALITY

128 Duxford Rd, Whittlesford, Cambridge, CB22 4NH


Wellbeing and relaxation



Reiki With
Sue Pitman
 HELP IS AT HAND

Tel. 01223 843164
www.reikiwithsuepitman.co.uk

Barker Bros
 EST 1843



QUALITY LOCAL PRODUCE

FAMILY BUTCHERS

43, High Street, Great Shelford
 01223 843292
www.barkerbrosbutchers.co.uk



More than just a service



Heating



Plumbing



Renewables



Electrical

All Domestic and Commercial works undertaken

www.shelfordheating.co.uk

Telephone 01223833426 E-Sales@shelfordheating.co.uk

Stapleford WI



THE final meeting of 2022 was a great success and was enjoyed by nearly 40 members and three guests. Following the business section, led by Celia Weir, a Harvest Supper was served at tables which had been beautifully decorated by Amanda Boote. The main course had been prepared by committee members. The desserts which were apple-based and provided by members were entered for the Produce Cup. Thanks go to Tony Smith who had agreed to taste and judge these and the worthy winner was Yvonne Allison for a delicious pecan and apple toffee cake. The evening continued with a quiz and we are grateful to Henry Weir for organising and presenting this. Everyone left The Pavilion feeling they had enjoyed an evening of fun, good company and good food!

On the first Saturday in December members were involved in two activities. Both included serving refreshments, one at the Nachingwea Link Christmas fair in Shelford and the other in Stapleford where we hosted a coffee morning. We were kept busy at both venues and at Cox's Close entertained several villagers who dropped in for a chat and some cake.

Our next meeting will be on the 26 January, the fourth Thursday in the month at Stapleford Pavilion. Alan Osborne will be giving a talk titled 'Rosalind Franklin (structure of DNA)'. In February we are hearing about 'Fused Glass' from Debbie Burton. If either of these talks interest you and you would like to come as a visitor, and find out more about the WI, then do please come along where you will be assured of a warm welcome. Our meetings start at 7.30pm at the Pavilion.

You can also find out more by contacting Sallie Dixon on 843847. Also see staplefordwi.weebly.com. **Joyce Dobson**

Friends of Great Shelford Library

Annual General Meeting

The Friends of Great Shelford Library Annual General Meeting will take place on Tuesday 24 January at 7.30pm in the library.

Everyone is welcome to attend the meeting when seasonal refreshments will be provided.



COULSON

Plumbing ♦ Heating ♦ Electrical

01223 423750 services@coulson.co.uk

All aspects of plumbing, heating & electrical works undertaken. From small maintenance tasks to large scale replacement & upgrade works.

Bathroom Refurbishments; Boiler Servicing, Breakdowns & Upgrades; Central Heating Installs; EV Charging Points; Consumer Unit Upgrades; Fixed Wire Testing; Rewires;

Smart Home Technologies.



green | weigh

minimal waste shop

60 High Street, Sawston, CB22 3BG

Minimal waste shop aiming to support people in reducing single use plastic & food waste.

Refill liquids & dried foods, storecupboard essentials, gifts & toiletries

Vegan, cruelty free with a wide range of organic & gluten free products.

Contact us via email
hello@greenweighshop.co.uk
Follow us on Facebook/Instagram:
@greenweighshop
Website: www.greenweighshop.co.uk



PANTHER
01223
715 715

WIDE RANGE OF VEHICLES AVAILABLE 24/7
INCLUDING 5-8 SEATERS

METERED RATES TO SURROUNDING AREAS

DOWNLOAD OUR BOOKING APP



Beach holidays, City breaks, Honeymoons, Weddings abroad, Adventure holidays, Ski, Cruise, Tailormade trips, Flight only, Car hire, Airport hotels and parking, and much more . . .

CHERYL HARRADINE

Travel Counsellor

01 223 842670

cheryl.harradine@travelcounsellors.com

www.travelcounsellors.co.uk/cheryl.harradine



travel counsellors



Cambridge Floorcare

cleaning & maintenance

We are a family owned and operated local business with over 40 years experience of all types of floor & furnishing cleaning.

We offer a no obligation visit to view the work & will then share our advice for the best possible restoration for your needs.

Family run, Friendly & Trustworthy professionals.

www.cambridgefloorcare.co.uk

01223 520769 or call 07831 094031

- Carpet Cleaning
- Upholstery Cleaning
- Rug Cleaning
- Amtico Cleaning
- Karndean Cleaning
- Tile, Stone & Grout

**10% off when quoting
'messenger 22'!**

**Bring your flooring & soft
furnishings back to life!**

Magog Singers



FRIENDS and Family joined Magog Singers for tea and mince pies after enjoying their end of term performance, conducted by John Clenaghan. The music covered a wide range of styles from spirituals including 'Down By the Riverside' and 'Steal Away', to 'Ave Verum', to the well-known madrigal 'April is in My Mistress' Face'. The afternoon culminated in 'Bridge Over Troubled Water'.

Term starts again on Tuesday 10 January at 2pm in the Stapleford Jubilee Pavilion. Do get in touch (kathleen.foreman@ntlworld.com) if you would like to enjoy this enthusiastic community choir.

Kathleen Foreman



Quiz time

THIS month's quiz has been supplied by Colin Ribton

1. Which medicine was originally derived from willow bark?
2. The Wannacry computer virus struck the NHS in 2017. What sort of malware was it?
3. At one end of the electromagnetic spectrum are radio waves. What is at the other end?
4. Which spacecraft has travelled for more than 40 years and is now leaving the solar system?
5. A full-scale replica of which dinosaur species was removed from the Science Museum in 2017?
6. What is the most abundant element in the Universe?
7. In 1877, Thomas Edison demonstrated his recorder with which nursery rhyme?
8. Which former science and maths undergrad is know as Harvard's most successful dropout?
9. What does ADHD stand for?
10. If there was a solar flare, how much later would it be seen on Earth?

Answers page 29

2G3S



HAPPY New Year! Let's hope in 2023 the world makes some progress over control of global temperatures, climate justice for developing nations, and the decline of nature, despite a rather disappointing Cop27. Have you made any resolutions to 'go greener'? For some tips, see takethejump.org/. To

paraphrase:

- Eat a largely plant-based diet, with healthy portions and no waste (contact COFCO for veg boxes, reduce packaging by using Green Weigh and local greengrocers).
- Buy no more than three new items of clothing per year.
- Keep electrical products for at least seven years (and repair/recycle the old ones at a Repair Café).
- Take no more than one short haul flight every three years and one long haul flight every eight years.
- Get rid of personal motor vehicles if you can – and if not keep hold of your existing vehicle for longer (use the bus, share lifts, hire a car if you only need occasional use).
- Make at least one life shift to nudge the system, like moving to a green energy, insulating your home, or changing pension supplier.



Dr Bike, our bike repair shed in the Stapleford Slaughterhouse, was very busy before Xmas, and I hope if you've visited you have been enjoying riding your revamped bike. Do think if you can offer occasional help, to enable the repair sessions to continue.

Re-imagining Our Future...

Together, Sunday 15 January, 3pm to 6pm. We have been liaising with Haslingfield and Harlton Eco Group and Eco Whittlesford to organise a family-friendly event aimed at bringing together people from neighbouring villages. The purpose of the event is to bring our communities together to help inspire



RE-IMAGINING
OUR FUTURE ... TOGETHER

15
JAN

How can our communities work together for a sustainable future?
Family (and planet) friendly shared pot-luck meal
Short inspiring films
Junk art IMAGINARIUM

Sunday 15 January 2023
3pm - 6pm
Whittlesford Memorial Hall
CB22 4NE

FREE EVENT
BOOKING REQUIRED

SCAN ME

<https://www.eventbrite.com/e/re-imagining-our-future-a-multi-village-eco-event-for-south-cambs-tickets-463508736107>

A MULTI-VILLAGE ECO EVENT FOR SOUTH CAMBS
Organised by Eco Whittlesford, 2013 Green Groups in Shelford, Stapleford and Saxton, Haulingfield and Haxton Eco

each other, learn from what we are all doing and explore opportunities for synergy. We are aiming for it to be a fun afternoon with films; an 'imaginarium' arts/craft exercise based on the work of Rob Hopkins; games for kids; and a Veganuary-inspired Feast. There will be displays from groups around Cambridge. The event is at Whittlesford Memorial Hall, free tickets via Eventbrite on our Facebook page, or see the poster left.

If you haven't heard of an 'Imaginarium' before, Rob Hopkins gave an excellent talk last year to Transition Cambridge on the importance of working towards a better

future, by first imagining what it should look like. Here is the link: [youtube.com/watch?v=OLP51zazlto](https://www.youtube.com/watch?v=OLP51zazlto). Rob has been very involved in the Transition Town movement, and you may have heard of the scheme in Totnes which has a local 'Totnes Pound' to help local money be spent locally. He has a positive view of what people can do when they get together and think and imagine what kind of world they want to live in, which starts the thinking of how to get there - things don't have to be the same old same old just because they've always been done that way. If people have the time and space to let their imaginations start, and see examples of what can be done, then things can begin - our Bike Shed is a start!

If you are interested in green matters and the environment at all levels (individual, local, national, international), send an email to greengroupssss@gmail.com to sign up for our quarterly newsletter, or to get more information about our meetings. We are a friendly group and welcome anyone who wants to come along to one of our events or to find out more about how we can live more sustainably. Also see our Facebook page and our website (type 2G3S into Google and you will find us). **Helen Hale**

L A Kerridge

Painting and decorating

*15 years-plus
experienced tradesmen
Quality interior and
exterior decoration
Artex ceilings smoothed
Free estimates and quotes.*

Tel 01223 832745
Mobile 07843 850484

HJ Paintin Ltd

**INDEPENDENT FAMILY FUNERAL DIRECTORS
MONUMENTAL MASONS**

Private Chapels of Rest
Floral Tributes and Printed Orders of Service
Golden Charter Pre-payment plans
Personal Attention Assured at All Times
24-hour Caring Personal Service



43 High Street, Linton, Cambridge CB21 4HS

Tel: 01223 891226

8 Morley's Place, Sawston, Cambridge CB22 3TG

Tel: 01223 830065

TIM PHILLIPS & Co.

Accountants

Established 1991

Independent, specialist service for:
**Small Business • Self Assessment
Personal Taxation**

Free initial consultation - no obligation

EASY, FREE PARKING

Copley Hill Business Park, Cambridge Rd, Babraham
Off A1307 between Wandlebury and Babraham

Tel: 01223 830044 www.tpaccounts.co.uk



Mrs Rosemary Rigge

Grad Dip Phys MCSP Reg. HPC
CHARTERED PHYSIOTHERAPIST

T: 01223 844091

M: 07958 708728

E: physio.rigge@ntlworld.com

TREATMENT ROOMS:

26 Mingle Lane, Stapleford
or home visits

ALL HUNG UP



Specialist | Blinds
Tracks | Poles | Curtains
Supply and Installation

E: paul@allhungup.uk
T: 07920 772 969

www.allhungup.uk

M D COOPER

specialising in
INTERIOR DECORATING
AND GLAZED TILING

Design services available

4 Falkner Road, Sawston
Telephone 01223 832422
Mobile 07860 803938

Puzzle Corner

Y not and Y

Find the answers to each pair of clues

Putting a letter Y at the end of the first answer gives the second answer e.g. circle/mad (4/5)

LOOP/LOOPY

Group 1

everyone/partner (3,4)

vehicle/occupied (3,4)

play on words/weak (3,4)

metal/very small (3,4)

crowd/US musician Richard Hall (3,4)

Group 2

legendary Swiss hero William/box (4,5)

former Home Secretary/rosy (4,5)

stronghold/XL (4,5)

platform/flower (4,5)

Andrew or Johnny/combine (4,5)

Group 3

lock brand/plump (5,6)

jam/prison (5,6)

government department/provide money (5,6)

useless item/Daniel Handler's pseudonymous first name (5,6)

Dog/dog (5,6)

Set by Hermes - Answers on page 41

CE
APPROVED

From £895*
for a fully fitted electric garage door.
WAS £1,354 INCLUDING VAT.
Gotta get a Garolla.

Trustpilot
4.8 out of 5 | Over 3,000+ reviews

GAROLLA
ROLLER SHUTTER DOORS
www.garolla.co.uk

CALL US TODAY ON:
01223 902 156
MOBILE:
07537 149 128

LINES OPEN 7 DAYS A WEEK

*Offer valid for openings up to 2.4m wide & including 2 remote controls, 55mm white slats, internal manual override.



Exceptional Residential Nursing & Dementia Care at The Cambridgeshire Care Home

We pride ourselves on our ability to respond to individual needs and preferences. Whether a residents stay with us is just a two week break or a permanent residency everyone living at The Cambridgeshire Care Home will be treated with dignity, compassion and respect.

Call us on 01223 551200 or email enquiries@cambridgeshirecarehome.co.uk

Stapleford Twinning Association

Mince Pies and Madeleines



WHICH do you prefer? Well, at a festive get-together in December, both were on offer! The Christmas Social, our final event of 2022, was a bring-and-share supper at which a variety of British and French (and Indian!) classics were on the table, including: biryani and brie; tartiflette and trifle; and baguettes and bangers (*les chiens chauds?*).

It always seems to happen. Attendees were simply asked to bring a plate of food to share, sweet or savoury, and by some magic there was a perfect balance of mains, desserts and cheese. The wine that appeared wasn't too shabby either with evidence of produce from France to New Zealand.

The only downside was hearing that England lost to France in the World Cup! Hey-ho (*c'est la vie*). At least there was enough wine left for those of us favouring England to drown our sorrows!

We're planning an exciting range of events for 2023. To keep up-to-date on these and other news please visit twinning.staplefordvillage.org.uk.

Tim Jessop

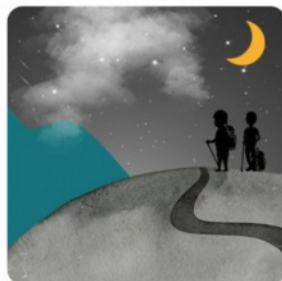


Storytelling Sunday:

Curious about Ralph Vaughan Williams?

Sunday 8 January | 10:30am & 12:00pm

Join BBC writer & presenter Kate Romano to discover the story of composer Ralph Vaughan Williams, illustrated with simple shadow images & live music. Age 6+



Eblana String Trio

Sunday 15 January | 12:00pm

Music for string trio by Boccherini, Beethoven & Grace Evangeline Mason performed by this acclaimed string ensemble



Ant Law & Alex Hitchcock Quartet

Sunday 22 January | 12:00pm

'Game changing, innovative' guitarist Ant Law teams up with renowned tenor saxophonist Alex Hitchcock to perform music from their recent album



Leon McCawley, piano

Friday 27 January | 7:45pm

Haydn, Chopin, Beethoven & Schumann from 'one of today's most impeccably musical pianists' (International Piano)

Storytelling Sunday: The Hare & The Hedgehog

Sunday 29 January | 10:30am & 12:00pm

The old tale of how the Hedgehog outwits the Hare is retold by Andy Lawrence in his charismatic & engaging style with beautiful hand-made props. Age 6+



Two School Governor vacancies

STAPLEFORD Community Primary School Local Governing Board is looking to appoint two new governors to join a committed team supporting our good (OFSTED rated), happy and vibrant school.

Governors are responsible for ensuring the strategic direction of the school, its performance and use of resources to support learning. They help to ensure that our local school provides the best possible education for all children in its care. The roles will be rewarding and will offer the opportunity to support the school through a period of change as a new headteacher joins in January.

The Local Governing Board meets twice each academic term in the evenings (occasional remote attendance can be accommodated). Governors also visit the school once or twice per term during the school day. Governors do not need to be educational experts to tackle the responsibilities required, and we pride ourselves on the breadth of experience of our members. For the two available roles, an interest in health and safety or strategic planning would be desirable although not essential. Advice and training are available to help new governors settle in.

The Local Governing Board is looking for members of the local community with some daytime availability, interest and enthusiasm to fulfil the roles. If you are available and interested in joining our successful team, please contact the Co-Chairs of Governors:

Edward Gunn (egunn@staplefordprimaryschool.org).

Martin Brown (mbrown@staplefordprimaryschool.org).

You can find out more information about the Local Governing Body of Stapleford Community Primary School on the school website at staplefordprimaryschool.org where you will also find an application form.

Stapleford Community Primary School and its Local Governing Board are members of the national governance award-winning Anglian Learning Trust; for information see anglianlearning.org. **Surabhi Khanna**

Quiz answers

1. Aspirin.
2. Ransomware.
3. Gamma rays.
4. Voyager II.
5. Diplodocus.
6. Hydrogen.
7. Mary had a little lamb.
8. Bill Gates.
9. Attention deficit hyperactivity disorder.
10. Eight minutes.

Stapleford Strollers: Walk 110

A walk on Quy Fen: a circular walk from Anglesey Abbey

To get to start of walk

BEGIN in the car park at Anglesey Abbey, Quy Road, Lode, CB25 9EJ. The road is the B1102. You don't have to be a National Trust member to park there. The Strollers ate in the café after the walk, but The Shed (pub/restaurant) at Lode is a good alternative.

Length of walk

4.3 miles. The walk will take about 1½ hours. It is fenland, so is flat and is likely to be muddy in places, especially in winter.

OS Map

OS Explorer map 226. Alternatively, get a free map extract from maps.the-hug.net or use the route map provided.

Extra Information

The name Anglesey has no connection with the island that is part of Wales. It is thought to relate to the former local medieval village of Angerhale. The suffix 'ey' means an island ie. it was slightly higher than the surrounding fen marshland. Quy, as in Quy Fen, is a derivation from an Old English word meaning 'cow island'.

Route of Walk

Walk into the rear overflow car park at Anglesey Abbey and track left to walk alongside the hedging that skirts the gardens. Continue straight ahead and pass an open area with tennis court to the right of the path. Continue ahead and swing left along a path between a fence and hedge. Emerge at Lode Mill. Cross the bridge and turn left to walk alongside the lode (Quy Water). The main National Trust estate is on the other bank, but the path is also on NT land.

Continue beside the lode (can be muddy), passing through several gates, into more open countryside. At the end of this section are sheds and, usually, horses to the left. Look out for a diagonal cross field path to the right and take it. Go through a metal gate and turn right on to a grassy drive. Continue along it. After swinging sharp left, continue ahead (ignore the first track to the right) along an avenue of trees, then turn right at a footpath sign and walk between trees until a metal gate is reached, leading on to Quy Fen.

Turn right on a clear grass track (fenced enclosure over to the left is a memorial for a man who died after being struck by lightning). Pass through

another metal gate and then, after a short distance, turn right through yet another gate, cross a small footbridge and follow the grassy track between fields. Carry on, following this track until, after the fields have been left behind, the route turns right along a wide grassy footpath. This also can get muddy.

At the end of this path, turn left. Shortly after, go diagonally right on a path which enters a wood. On leaving the wood keep straight ahead with an open field to the left and woodland to the right. Lode Mill is reached once again. Cross the bridge, with the mill on the right. Carry on ahead on the path between hedges walked earlier, and retrace your steps to Anglesey Abbey car park. **Graham Pink**



The Stapleford Strollers do not accept responsibility for any accident or mishap that may happen to any person who follows this route

A culturally curious café

KATE Romano reflects on Stapleford Granary's new café, four months after opening.

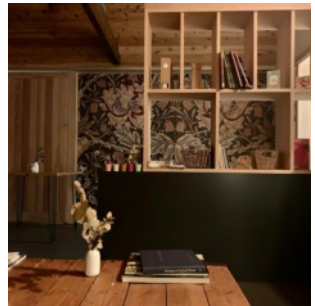
I love our café. I love its woody-nutty-bakery smell, the comforting hum of the coffee machine, the simple routine and rhythm of switching on the lights, polishing the glass, laying out the cakes and creating this immersive theatre, ready for our visitors. I get a little buzz of excitement when everything is set up, the music is on and we're ready to go: it's showtime!

I've spent a lot of time in our café. We designed, decorated, stocked and staffed it ourselves. We created our own systems and processes. There isn't a single thing that doesn't have a story behind it; the well-read dull-cloth travel books on the shelves, the William Morris oversized print, the 'wall of art' and the antique mirror... The café is a reflection and extension of us: our history, our tastes and our charitable aims.

Call in on a Sunday morning and you might find musicians from the previous evening's concert who have stopped by for breakfast. Or you might discover our piano tuners, our volunteers, exhibition hangers or technical teams pondering a problem or sharing stories. You'll bump into artists and creatives, tutors and students, friends and neighbours. You'll almost certainly see me, Tam and Louise with our laptops, ready to chat about the things that we do here, or jump up and make a coffee when it gets busy.

In the Arts, it can take months or years for an idea to come to fruition. In the café, an order is taken, items are assembled on a tray - a pleasing still life of coffee, pastries and loose leaf tea - and delivered to a customer. We create over 150 of these micro-productions every day, invariably met with smiles and gratitude. That's 150 little endorphin rushes. 150 jobs-well-done. The café is an immensely rewarding place to work.

Have you noticed our music? Eclectic, quirky and personal, these bespoke playlists have been created by the Granary's artistic planning team



and they can change the mood in an instant. The pounding drum and bass shuffle of *Rose Rouge* by St Germain brings 'morning-after-the-night-before' vibes to the early set-up. I like to fold away the wooden chairs at the end of the day, quietly, with Aiden O'Rourke's *Mangersta Beach*. Chick Corea inexplicably goes with anything. I met a smiling elderly couple who told me they were on their second date. They drank their coffee to Angela Morely's heartfelt love theme from the 1981 TV drama *Madame X* followed by Joshua Bell playing Nigel Hess's *Ladies in Lavender*. I hope - like me - they felt like they were starring in a movie. Well, it's all theatre isn't it? Or is it? 'Back to the real world' said one of our customers, reluctantly finishing his coffee and a stroll around the exhibition. Art can be an escape, but never a mere escape. Art is getting constructively lost; knowingly, collectively lost, with others, and understanding your relation with the real and unreal world. It is escapism as an aesthetically legitimate pursuit. Despite an evocative soundtrack, I know that I'm not really a hero of my own story, Don Quixote style. But I do enjoy the feeling of losing myself in music, in a book, a poem, a painting, whilst keeping one foot firmly on the ground. I see it in our visitors too. If they are escaping the 'real world', they momentarily become



characters in ours, falling into a new narrative, transported into another world, yet still able to contemplate it with some sort of detachment (*I don't like that painting... I like this one...* they say to one another). It was this idea of stories-within-stories, fiction-within-fiction, which led us to create our Storytelling Sundays for children. Tucked away in the cosy Orchard Room, we'll be '*seeing the world with large eyes*' (in the words of John Ruskin), visiting imaginary landscapes and improbable places with shadowy paper puppets, live music and glorious hand-held props.

Art is often at its most potent and powerful when it is allowed to permeate people's lives in ordinary, unexpected ways. Our humble little café isn't just a gateway into the art and music inside the building, but a place where the arts can be 'reframed' in the context of everyday life, grounded in human experience, bringing us back to earth, to what we love and why.

Find out more

Café opening hours: staplefordgranary.org.uk/stapleford-granary-café

Storytelling Sundays: staplefordgranary.org.uk/whats-on/events

Winter wonderland



Keith Oakes



Keith Oakes



Yes to Better Buses

THANK you to the *Messenger* team for reproducing in full my article in the December edition about the GCP's 'Making Connections' consultation, and thank you to those who have privately sent me their appreciative responses to that article. Sadly, I was rather frustrated to see that somewhere along the process of formatting and proofreading, the second paragraph of my quote from the House of Commons Select Committee's report was stripped of its quote marks, thus devaluing it by making it look like more of my own ranting, rather than the very carefully considered words of a committee of eleven cross-bench MPs, chaired by Huw Merriman MP, after their year-long enquiry into the matter. To be clear, may I repeat the full quote – these are HoC Select Committee's words, not mine:

“The greatest barriers to introducing road pricing are political.

Introducing new taxes is often unpopular so the political risk has always been seen as too high. However, fuel duty and vehicle excise duty are increasingly unfit for purpose. The consequences for both public finances and congestion management are too severe for inaction. To deliver a fair system of motoring taxation, politicians must find a way to take the politics out of road pricing.”

Anyway, I've been delighted to get involved with an enthusiastic group of 'Yes to Better Buses' activists, mainly based in Cambridge City, but including others from our village, who organised a march on Saturday 10 December to express theirs and others' support for the GCP trying to



address the pollution and congestion problems with this proposal. Around 300 marchers, across all generations from young to old, gathered and marched together on a very chilly morning. There has been some more coverage on BBC local news and website as well. I hope everyone who has an opinion either way did complete the GCP's formal survey in December to make their views known. It will be fascinating to eventually read the outcome of the consultation response, when the GCP publish it (no doubt we will have to wait until at least March to see that). **Miranda Fyfe**

Visit Docky Barn Café

DOCKY Barn Café, Grocery and Meeting Rooms is situated on the Copley Hill Business Park and welcomes all. We are a family run business and pride ourselves on good, friendly service. We are open from 8.30am to 3pm Monday to Friday, serving a variety of home cooked food, delicious cakes and hot drinks.

Well behaved dogs are very welcome in the café either inside or outside under our covered area.

We are pleased to be working in partnership with Morgans Butchery who are based at Baythorne Hall, Baythorne End and is where local butcher Miles Nicholas, who started his career in Ellis' Butchery in Great Shelford before moving to Stapleford Spar Butchery in 1989, can be found. (Miles was featured in the June issue of the *Messenger*.)

Miles visits the Docky Barn Café on a Wednesday where he has a small pop-up butchers with a wide selection of locally sourced and high welfare meats available for sale. You can also order bespoke cuts of meat for collection or for delivery to the local area.

The café offers a range of vegetables and fruit again locally sourced where possible.

We would like to say a big thank you to all our customers who have supported us and continue to do so and look forward to welcoming and meeting new customers. **Ian Haigh and Miles Nicholas**



Financial difficulties?



Are you in need, hardship or distress? Do you live in Stapleford? Then the Feoffees Charity may be able to help you.

For more information contact: Rev. Simon Taylor at simontaylorstandrews@gmail.com.



Butchery

High-quality meat with an award-winning friendly service.

Deli

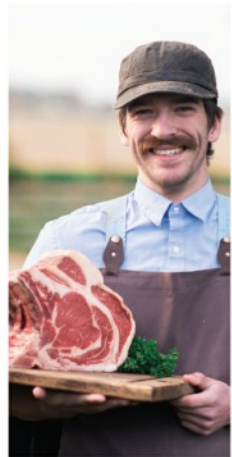
A mouth-watering array of cheese, olives, charcuterie and so much more!



THE GOG

The Gog Farm Shop is an award-winning farm shop that sources delicious local ingredients, making for the perfect foodie destination.

We look forward to welcoming you soon!



Grocery

Surprising you with foodie gems from local producers.



Café

Serving our Great Taste Award winners everyday.



Open 7 days a week

www.thegog.com



Library news



HELLO, my name is Mel, and I would like to introduce myself as the new librarian at Great Shelford. It has been lovely meeting customers of the library and I am looking forward to meeting more of you during the coming months. Thank you for the warm welcome I have received.

We are hoping to run some exciting new groups and events this year. But please let me know if there are any activities you would like to see taking place in the library. We are starting a new Reading Group and a Lego Club from January.

Great Shelford Library's **Story and Rhyme Time** for ages 0 to 4 years will be running from January on the first and third Tuesday each month. Sessions will run from 10.30am to 11am and there is no need to pre-book (term time only). We would love to hear from anyone interested in running a Rhyme and Story session. If you could commit to one Tuesday a month and enjoy telling children rhymes and stories, we would love to hear from you. Please call into the library if you would like more details.

Our **Engage Talks** will continue to take place once a month, on the fourth Wednesday of the month. January's talk will take place on Wednesday 25 January from 2pm to 2.30pm, and is an informative talk about Cambridge's Business and IP Centre which is based in Central Cambridge Library. The BIP is aimed at supporting new or growing businesses in Cambridge and Peterborough. Please pre-book in the library or via cambourne.referral@cambridgeshire.gov.uk. Donations of £2 appreciated.



Lego club starts on Monday 17 January from 4.30pm to 5.30pm. A fun hour for children to create with Lego. Parents will need to stay with their children and remain their responsibility. This is a free club, but

donations of £2 appreciated.

We are planning a new **Reading Group** starting in January, meeting once a month on Wednesday morning between 10.30am and 11am. A lovely opportunity to read and share different views on a chosen book. The first meeting will be on Wednesday 12 January. Please come into the library to get more details and register interest. **Mel Abbiss**

Email: cambourne.referral@cambridgeshire.gov.uk

Telephone: 0345 045 5225. cambridgeshire.gov.uk



FREE no obligation quotes and advice provided

My Village Handyman Services



- DIY repairs and odd jobs
- Painting & Decorating
- Tiling & Flooring
- Gardening, Landscaping,
- Patios & Decking
- Fencing and sheds
- Kitchen & Bathroom installation
- Brickwork, Dry Walling and Small Builds
- Carpentry and Plumbing
- Window and Gutter cleaning
- Jet wash and Patio cleaning
- Rubbish clearance and Tip runs
- Carpet cleaning and Wood Floor staining
- New doors or locks
- Security and Garden lighting
- **No job is too Small or too Big!**

Your very local handyman!

Contact Steve to arrange a visit or quote

07500 876376 or 01223 881700

Email: steve@myvillagehandyman.com | Web: www.myvillagehandyman.com



Reconnect to your life

Whatever your hearing difficulty, angli-EAR Hearing uses the most up-to-date tests and equipment to find the best solution for you.

Independent audiology experts you can trust

- Hearing Assessments
- Ear Wax Removal
- Hearing Aids
- Tinnitus Solutions



Book your **FREE** ear health check today

Where to find us:
Audiology House (Cambridge)
15 Woollards Lane, Great Shelford, Cambridge CB22 5LZ



01223 661399
info@angliarhearing.co.uk

BOOK ONLINE www.angliarhearing.co.uk

Granta Medical Practices

Happy New Year!

FOR some of us its New Years' Resolutions time, and we're here to help you achieve your goals.

"In 2023 I would like to stop smoking"

We can offer you smoking cessation and our trained nurses will be happy to help you. Please ring us on 0300 234 5555 for further information and to arrange an appointment.

"In 2023 I would like to lose weight"

If you are over 16 and your BMI is greater than 25 you can access a free adult weight management service via our Social Navigation team. Please ring 627745 or email granta.socialnavigator@nhs.net. When contacting the team please give your current weight and height.

"In 2023 I would like to stay healthy"

If you are aged between 40 and 74 and do not have a pre-existing long term medical condition, you may be eligible for a free NHS Health Check. Please ring us on 0300 234 5555 for further information and to book an appointment.

Also, are you up to date with the vaccinations you are eligible for, e.g. flu, shingles, pneumonia? If you are unsure please do not hesitate to contact us and we can check for you.

"In 2023 I would like to go on holiday"

Are you planning a holiday of a lifetime in 2023? The Granta Travel Clinic team can give you advice on what vaccines and medications you may need for your trip away. Simply fill out a travel form via our website or call in to pick up a leaflet.

From all of us here at Granta, we wish you a healthy and safe 2023.

Sandra East, Head of Patient Services (sandra.east@nhs.net)

Puzzle Corner answers

Y not and Y

Group 1: ALL/ALLY; BUS/BUSY; PUN/PUNY; TIN/TINY; MOB/MOBY

Group 2: TELL/TELLY; RUDD/RUDDY; FORT/FORTY; DAIS/DAISY; MARR/MARRY

Group 3: CHUBB/CHUBBY; CHOKE/CHOKEY; DEFRA/DEFRAY; LEMON/LEMONY; SNOOP/SNOOPY



DAVID FOX CARPENTRY

*PURPOSE-MADE
JOINERY AND
FITTED FURNITURE*

Unit 4, Granta Terrace,
Stapleford
Cambridge
Tel: (01223) 845143



Specializing In Electrical
Work Within Domestic
Installations

36 Haverhill Road, Stapleford,
Cambridge CB22 5BX

07704493920
enquiries@scpelectrical.co.uk

All types of
carpentry work
undertaken

Phone
01223 842440
for free prompt estimate

STEVE BOND

3 Cherrytree Avenue
Stapleford
Cambridge



01223 832 928
www.Rothwells.biz

Carpet, Stone, Upholstery and Rug Cleaning

Rothwell's has been in business since 1993.
We're an honest local family firm.
Our large truck-mounted machines mean more
cleaning and drying power.

Members of both the NCCA and TACCA.
We will move the furniture for a thorough clean.
100% satisfaction or it's FREE.

*Call Oliver and Max Campbell for expert help
today.*

DAY

CHARTERED
CERTIFIED
ACCOUNTANTS

Do you want more control over your business accounts, or want to organise your personal tax situation more effectively?

We are a friendly team of qualified accountants who can help you reach the potential of your business and give you expert professional accounting and tax advice using the latest technology to work for you in achieving your goals.

We can deal with all matters relating to business tax and accounting including online bookkeeping, VAT

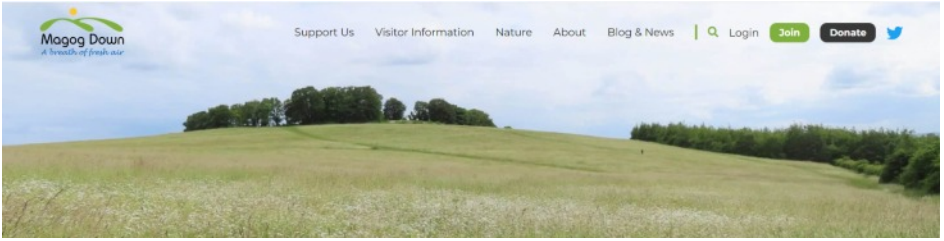
and PAYE matters. Bespoke all inclusive packages are available from £145 plus VAT pcm.

Private clients can be confident that we will deal efficiently with tax return preparation and all aspects of tax planning.

To arrange an informal chat or a meeting please contact us at:

Quern House, Mill Court, Great Shelford, Cambridge, CB22 5LD

T: 01223 506533 F: 01223 363810 E: hello@day-accountants.com W: www.day-accountants.com



Magog Trust new website

THE Magog Trust is proud to announce the recent launch of our new website. Now easily accessible on all mobile devices, the site has been completely redesigned and incorporates a raft of new articles, photos and features. There is also a facility for new Friends to subscribe directly through the site, doing away with the need for paper application forms and streamlining our administration in the process. Please take a look at magogtrust.org.uk. Geoff Hale, Trustee

Great Shelford Friendship Group



WE are hoping to re-start Great Shelford Friendship Group for older men and women in the Parish Community Room at St Mary's Church from Thursday 2 February from 2.30pm to 4pm weekly in term-time.

Open to all, former members and new ones!

To register interest / for more information, please contact (or just come along):

Rosey Feuell, Lay Minister at Great Shelford St Mary's 213305.

roseyleaf@talktalk.net





QUALITY FLOORING SUPPLY,
INSTALLATION & AFTERCARE

Specialists in Wood Flooring, Carpets & Vinyl Flooring Solutions

"What a fantastic company. Knowledgeable, friendly staff & quality services. My company has used Art of Flooring on a number of occasions already and have been delighted with the whole experience. Thoroughly recommended & future projects will be coming your way." Mr Andy Ward, Cambridge

141 Milton Road Cambridge CB4 1XE
01223 755 802 www.ArtofFlooring.co.uk

The Country Store

Animal feeds, bedding and accessories,
shooting requirements and country clothing



www.thecountrystore.co.uk

Unit 12a, Sawston Trade Park, Pampisford,
Cambridge CB22 3EE.
01223 837977

Stapleford Community Warden Service

Assisting older people to live independently at home. Providing daily phone calls (Monday to Friday) and help with things such as:

- making drinks and light meals
- making appointments
- collecting prescriptions
- watering plants
- getting small items of shopping
- wellbeing contact

Direct line: 07436 102733 or
juliet.hawksworth@ageukcap.org.uk



Age UK Cambridgeshire and Peterborough is a charitable incorporated organisation registered with the Charity Commission for England and Wales with registered charity no. 1165856. Registered Office; 3 Victoria Street, Chatteris, PE16 6AP



staplefordonline.co.uk

Your community website
for up to the minute news and views
from around the village

Great Shelford Parochial Charities

Applications invited for affordable homes

WE have several almshouse homes in Great Shelford becoming available in February / March / April. Applications are invited from individuals, couples and families who are:

- resident in Great Shelford or the surrounding area, or who otherwise have a strong connection to Great Shelford.
- and are on low incomes,
- and in housing need,
- and are capable of independent living.



Almshouse residents do not pay *rent* as such - but pay a *monthly maintenance contribution* which is set at 50% of the rental rate for similar private property in the village. Application forms will be available from **4 January** from our partner, John Huntingdon's charity, 189 High St, Sawston, CB22 3HJ. Please phone 492492 or visit office@johnhuntingdon.org.uk or Great Shelford Parochial Charities website - gspc.org.uk/housing. John Huntingdon's Charity (JHC) can provide assistance with completing the form.

Applications should be submitted to JHC by 27 January. They will be processed confidentially by JHC - and anonymised - before being forwarded to Parochial Charities trustees for assessment. Shortlisted applicants will be invited to attend an informal interview.



Typically, a successful applicant will be eligible for a property with one bedroom per:

- adult couple
- other adult aged 16 or older
- two children under 16 and of the same sex
- two children under 10
- other child

Brian Connellan, Trustee, Great Shelford Parochial Charities

Neighbourhood plan

The value of a good landscape character assessment

THE Neighbourhood Plan (NP) steering group has recently met for the first time with its external support consultants from Cambridgeshire ACRE. Preparing a NP, which once approved attains the same legal status as a local plan, is not a simple matter, so it is par for the course to employ the assistance of planning consultants, and grant funding is available towards this.

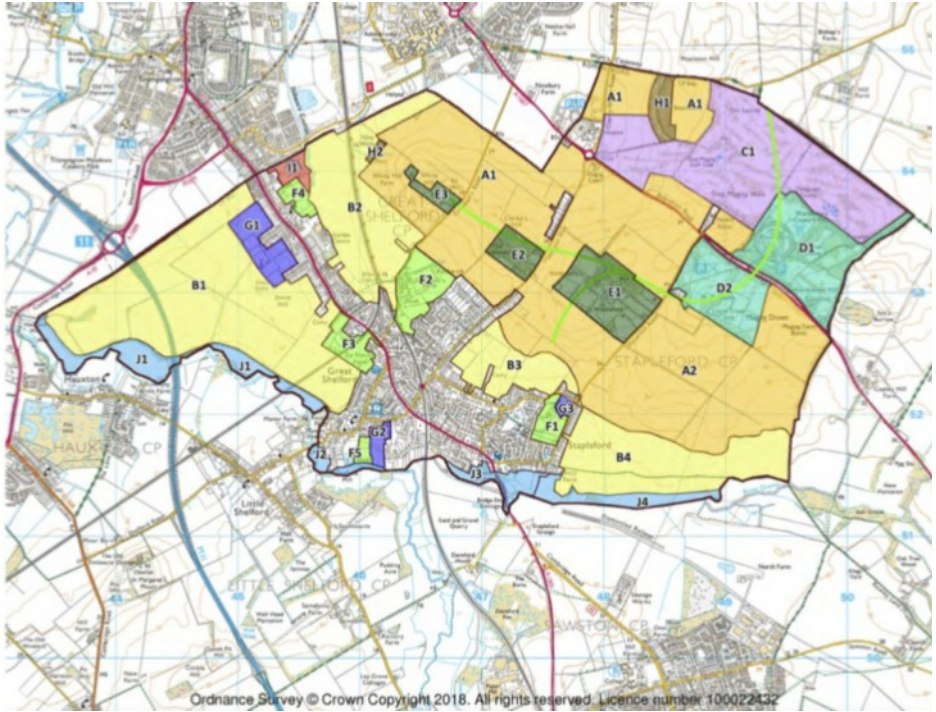
At our workshop it was very reassuring to hear Cambs ACRE praise the outcomes and interpretation of the initial public opinion survey we conducted in Spring 2022. Combined with other data which we already have, courtesy of work done by a previous iteration of the NP steering group from 2016-19, we are in a very good position to now start drafting a vision for our NP, plus policy themes and objectives.

Perhaps the most significant piece of work that we ‘inherited’ from the previous steering group is a Landscape Character Assessment (LCA), which was commissioned from landscape planner Sophie Smith. An LCA is a tool for identifying the patterns and individual combinations of features – such as hedgerows, field shapes, woodland, land use, patterns of settlements and dwellings – that make each type of landscape distinct and often special to those who live and work in it. These special qualities and distinctive characteristics can be protected, and potentially also enhanced, by planning policies created as part of the NP process.

Our initial public opinion survey clearly showed the high value placed by residents on our landscape setting, so it is critical that this is reflected in our NP. Our landscape is the backbone of our rural, village identity: it helps to protect us and separate us from Greater Cambridge urban sprawl; living in a green setting makes us feel better and we’d like more of it and wider access to it; and finally, in the face of increasing development and climate change pressures, we want to protect it for wildlife and future generations.

Stapleford and Great Shelford’s LCA divides our NP area into 10 different character types and provides recommendations for how we can protect and enhance each of them: arable hills; arable lowland; golf courses; historic country parks; settled hilltop estates; enclosed farmland pastures; sports fields; woodlands; campsites; the river Granta, water meadows and riverside pastures. The following graphic is rather too detailed to read in this format, but it gives you an idea of how these character types map to areas with which you will be familiar.

Landscape character types and areas in Stapleford and Great Shelford



For more information on the above map please visit our Landscape Character Assessment which is currently hosted on Stapleford Parish Council's website at staplefordparishcouncil.gov.uk/landscape-character-assessment/.

It's too soon to say which aspects of Stapleford and Great Shelford's LCA will be translated into policies in our NP but work on this will start early in the new year. In the meantime, here are some examples of what other NPs have done:

- "Development will be supported where it...safeguards open countryside and cherished public views from inside and outside of the parish as defined in the LCA" (Whiteshill and Ruscombe NP, adopted 2016)
- Development proposals will only be supported if they do not jeopardise the status of Long Compton's dark skies site. Any applications for new development that requires a lighting scheme should show how the status of dark skies will be protected (Long Compton NP, adopted 2016).

I look forward to continuing to report on the NP's progress throughout 2023. **Jenny Flynn**, Chair of Neighbourhood Plan steering group; Vice-Chair Stapleford Parish Council



quattro-tech
AUDI VOLKSWAGEN SEAT SKODA

Independent specialist for all things
Audi, VW, Seat, Skoda & VW Commercial

- ❖ VWG Servicing
- ❖ VWG Repairs
- ❖ VWG Diagnostics
- ❖ VWG Performance Upgrades
- ❖ VWG Genuine Parts

quattro-tech.co.uk



SALES ❖ AIR CON SERVICING ❖ 4 WHEEL ALIGNMENT ❖ MOTs

revo Authorised Dealer

Unit 11A, Solopark Trading Estate, Station Road,
Pampisford, Cambridge CB22 3HB
Info.cambridge@quattro-tech.co.uk 01223 800850



f @QuattroTechLtd t @QuattroTechLtd i @quattrotechltd



Parish Council Chair's report

COUNTY Councillor Brian Milnes attended the December Parish Council meeting and gave an update on bus services. Some level of service has been restored, with the aid of Combined Authority subsidies. Work is continuing to further develop the business case for a franchised bus network in Cambridgeshire and Peterborough. Passengers with questions about bus services can email passenger.transport@cambridgeshirepeterborough-ca.gov.uk.

The result of the GCP's consultation on expansion of the bus services to be paid for by a congestion charge is awaited.

Help is available for those impacted most severely by the cost of living crisis with the provision of warm hubs, new foodbanks, discretionary council tax discounts and housing payments. See South Cambs website for information and guidance on applications (scambs.gov.uk/cost-of-living-support/).

The Council discussed speeding concerns in Haverhill Road and Bury Road, at the request of residents. While the Parish Council acknowledges that there is a problem, the main solution (applying for a Local Highways Improvement scheme) would be prohibitively expensive as the Parish Council would have to make a significant contribution to any measure, potentially amounting to tens of thousands of pounds. In addition, only one application for a single intervention is allowed per year and a successful application is not guaranteed. The Parish Council is investigating other avenues to reduce speeding and increase safety. Parents are requested not to take children to school by car unless necessary, to be aware of safety outside school when parking, and to 'park and stride' from elsewhere in the village whenever possible.

The Slaughterhouse is being used weekly on Thursday afternoons for minor bicycle repairs and this is a success. Thanks were extended to Jim Chisholm for his organisation.

An architect has been appointed to advise on refurbishment of the Jubilee Pavilion and Slaughterhouse to achieve practical, cost-effective improvements and economy in running costs. Installation of Wi-Fi in the Pavilion is moving a bit nearer, with an agreement to supply a telephone line, but no completion date is yet available.

Fees for sports groups will be increased in 2023 to cover maintenance costs, such as grass cutting, care of the MUGA surface, etc. However, the Parish Council is aware that the current rise in the cost of living will also be



HOLIDAYS FOR THE CULTURALLY CURIOUS

ACE CULTURAL TOURS

aceculturaltours.co.uk | 01223 841055

a consideration. Finally, the Parish Council hopes that all enjoyed festivities over Christmas and wish you a very happy new year!

Gillian Pett, Chair of Stapleford Parish Council

Better Ways 4 Busways!



**BETTER WAYS
FOR BUSWAYS!**

CSET has been delayed again with Greater Cambridge Partnership officers now saying that they will submit to Government a Transport and Works Act Order (TWAo) in the first quarter of the next financial year (ie April-June). We will then

need to object to the TWAo, drawing on our expertise and resources to set out our carefully researched reasons. We need to object at this stage if we are to be permitted to make representations at the subsequent public enquiry. Whilst we can still be focusing our campaign and raising the necessary funds, the time for significant action is advancing.

With that in mind, we are seeking volunteers to assist with delivering leaflets which will be going out to all affected villages; whatever and wherever you can help, would be much appreciated. We would also particularly value the assistance of someone who could manage email notifications via Mailchimp. Please contact me ASAP.

Petition

CPPF (Cambridge Past Present & Future) has launched a CSET petition, calling on the GCP and Cambridgeshire County Council to listen to public opinion, save our green belt, protect the Gog Magog hills, and choose a better solution to a busway through open countryside. You can access the petition from cambridgeppf.org/south-east-cambridge-busway. This petition will be presented to the GCP Board at their meeting in the new year. Your support counts, so please sign up.

BW4B! website

The Better Ways 4 Busways! website now provides a brilliant description of the better way of providing bus links without the damage of the GCP's road to our countryside. Visit bw4b.org for more information. One of the most helpful aspects of our website is its interactive maps, enabling residents in all local villages to view the impact of the busway on our immediate environment. Do please take a look.

Thank you for all your continued support. **Howard Kettel**
(hello@bw4b.org)

Stapleford Parish Council

staplefordparishcouncil.gov.uk



COUNCILLORS

Gillian Pett (Chair)	gpett@staplefordparishcouncil.gov.uk
Jenny Flynn (Vice Chair)	jenny.flynn@staplefordparishcouncil.gov.uk
Francis Bostrom	fbostrom@staplefordparishcouncil.gov.uk
Anna Disley-Stevens	annadstevens@staplefordparishcouncil.gov.uk
Barbara Ann Kettel	bkettel@staplefordparishcouncil.gov.uk
Howard Kettel	hkettelstaplefordpc@gmail.com
David Pepperell	dpepperell@staplefordparishcouncil.gov.uk

CLERK

Belinda Irons 07472 398823 clerk@staplefordparishcouncil.gov.uk
Address for correspondence: 14 Crawley End, Chrishall, Nr Royston,
Herts, SG8 8QL

SOUTH CAMBS DISTRICT COUNCILLORS

Peter Fane, 27 London Road, Great Shelford CB22 5DB
peterfane1@live.co.uk 843861 / 07802 256 861
Will Jackson-Wood
cllr.jackson-wood@scambs.gov.uk 07873 731597

Stapleford Parish Council normally meets publicly on the first Thursday of every month. Please check our website for the latest details



Ken Benson

Heating & Plumbing

Reliable local tradesman

Plumbing • Bathrooms • Wet Rooms • Central Heating

Mob: 07766 544888

Email: kennybenny50@virginmedia.com

PEASGOOD & SKEATES

THE FAMILY FUNERAL SERVICE

Purpose built funeral homes with private chapels of rest
Home arrangements available
Funeral pre-planning - a wide range of memorials

45 Moorfield Rd
DUXFORD
01223 833463

48a High Street
SAWSTON
01223 791065

enquiries@peasgoodandskeates.co.uk

also in Cambridge, Haverhill
and Saffron Walden

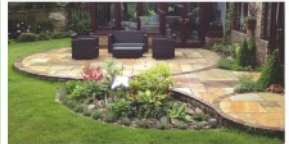
www.peasgoodandskeates.co.uk



Summit Landscapes

LANDSCAPES

PAVING • DRIVEWAYS
BRICKWORK • CARPENTRY
GROUNDWORKS



www.landscapingpaving.co.uk

PHONE

01223 929 394

JASON KIRBY

Professional Painting
& Decorating Ltd

*A Professional Service
from Start to Finish*

Tel: 01954 211775
www.jasonkirbyltd.co.uk



The newly refurbished
Zara Indian Cuisine is
open for dine-in and
takeaways.

Zara Indian Cuisine
offers a sophisticated yet
relaxed dining experience

RESERVATION & ORDER ONLINE AT
www.zarashelford.com

1 Hinton Way, Great Shelford, CB22 5AX
01223 846 668 / 01223 844 244



KITCHENSMITHS

4 STATION ROAD, HISTON, CAMBRIDGE, CB24 9LQ

01223 236 456

info@kitchensmiths.co.uk

www.kitchensmiths.co.uk

